



US005957230A

# United States Patent [19]

[11] Patent Number: **5,957,230**

Harano et al.

[45] Date of Patent: **Sep. 28, 1999**

[54] **COOLING SYSTEM FOR SNOWMOBILE ENGINE**

5,251,718	10/1993	Inagawa et al.	180/190
5,316,079	5/1994	Hedeen	165/140
5,346,001	9/1994	Rieke et al.	165/170
5,568,840	10/1996	Nagata et al.	180/190

[75] Inventors: **Tomoki Harano; Masanobu Yamamoto; Toyochika Eto**, all of Iwata, Japan

*Primary Examiner*—J. J. Swann  
*Assistant Examiner*—James S. McClellan  
*Attorney, Agent, or Firm*—Knobbe, Martens, Olson & Bear LLP

[73] Assignee: **Yamaha Hatsudoki Kabushiki Kaisha**, Iwata, Japan

[21] Appl. No.: **08/787,400**

## [57] ABSTRACT

[22] Filed: **Jan. 22, 1997**

A snowmobile having a lightweight fabricated frame assembly. The frame assembly includes a number of reinforcing elements, some of which comprise heat exchangers for the liquid cooling system of the engine, so as to provide high rigidity and light weight. The engine of the snowmobile is provided with an exhaust system that permits a relatively short effective length, but minimizes pulse-back effects by forming internal expansion chambers around the exhaust branch pipes. The drive for the snowmobile includes a reversing transmission and a brake assembly associated therewith in addition to a main brake assembly for the snowmobile. Furthermore, there is provided a parking brake assembly that is easy to operate and which will provide the operator with a visual and physical warning of its condition so that the operator will not attempt to operate the snowmobile with the parking brake engaged.

## [30] Foreign Application Priority Data

Jan. 22, 1996 [JP] Japan ..... 8-008746

[51] Int. Cl.<sup>6</sup> ..... **B60K 11/04**

[52] U.S. Cl. .... **180/68.4; 180/190; 123/41.51**

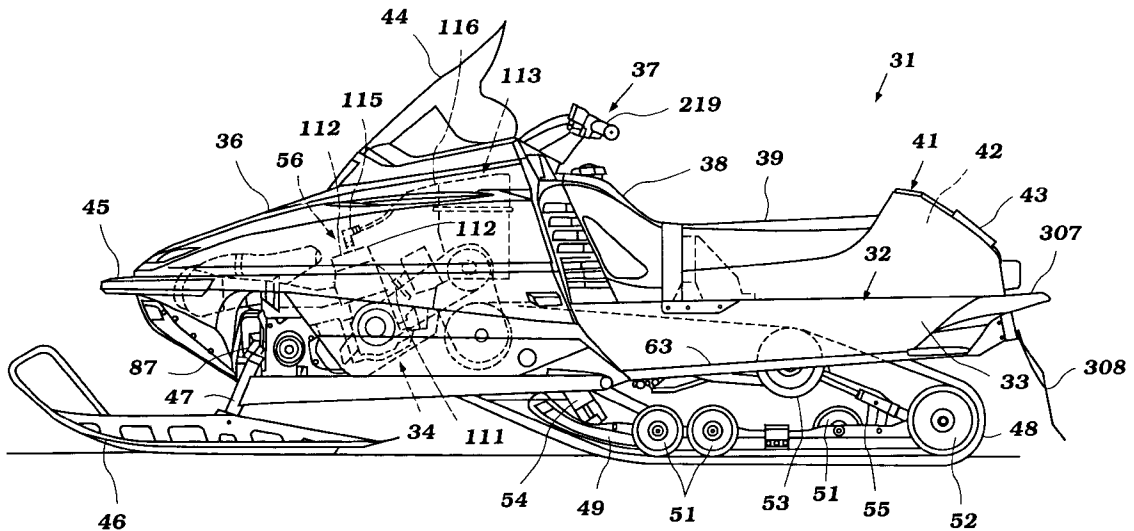
[58] Field of Search ..... 180/68.4, 68.6, 180/190; 123/41.51; 165/170, DIG. 118

## [56] References Cited

### U.S. PATENT DOCUMENTS

3,835,948	9/1974	Duclou	180/68.4
3,901,335	8/1975	Johnson	180/68.4
5,129,473	7/1992	Boyer	180/68.4
5,152,255	10/1992	Fukuda	123/41.33
5,232,066	8/1993	Schnelker	180/68.4

**20 Claims, 26 Drawing Sheets**



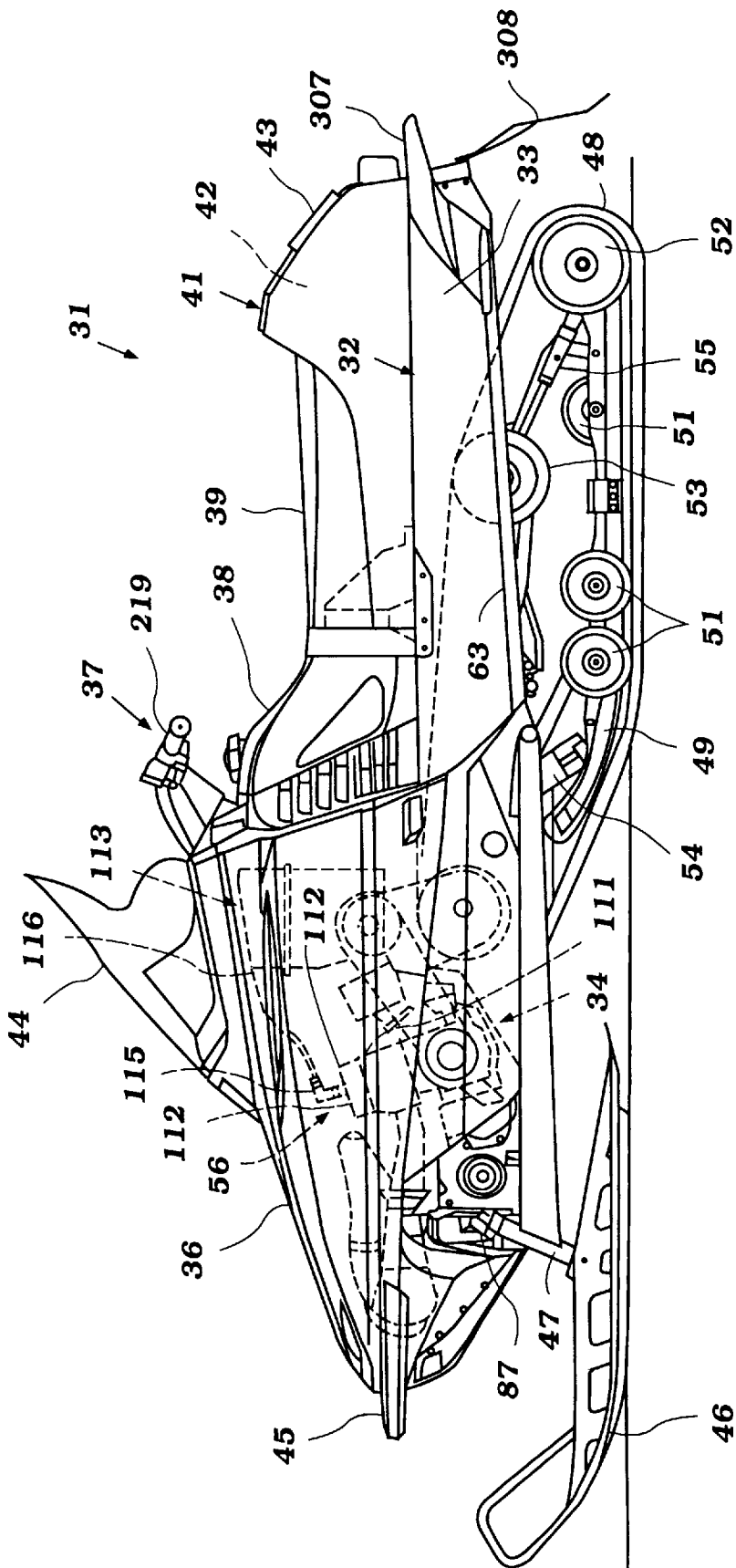


Figure 1

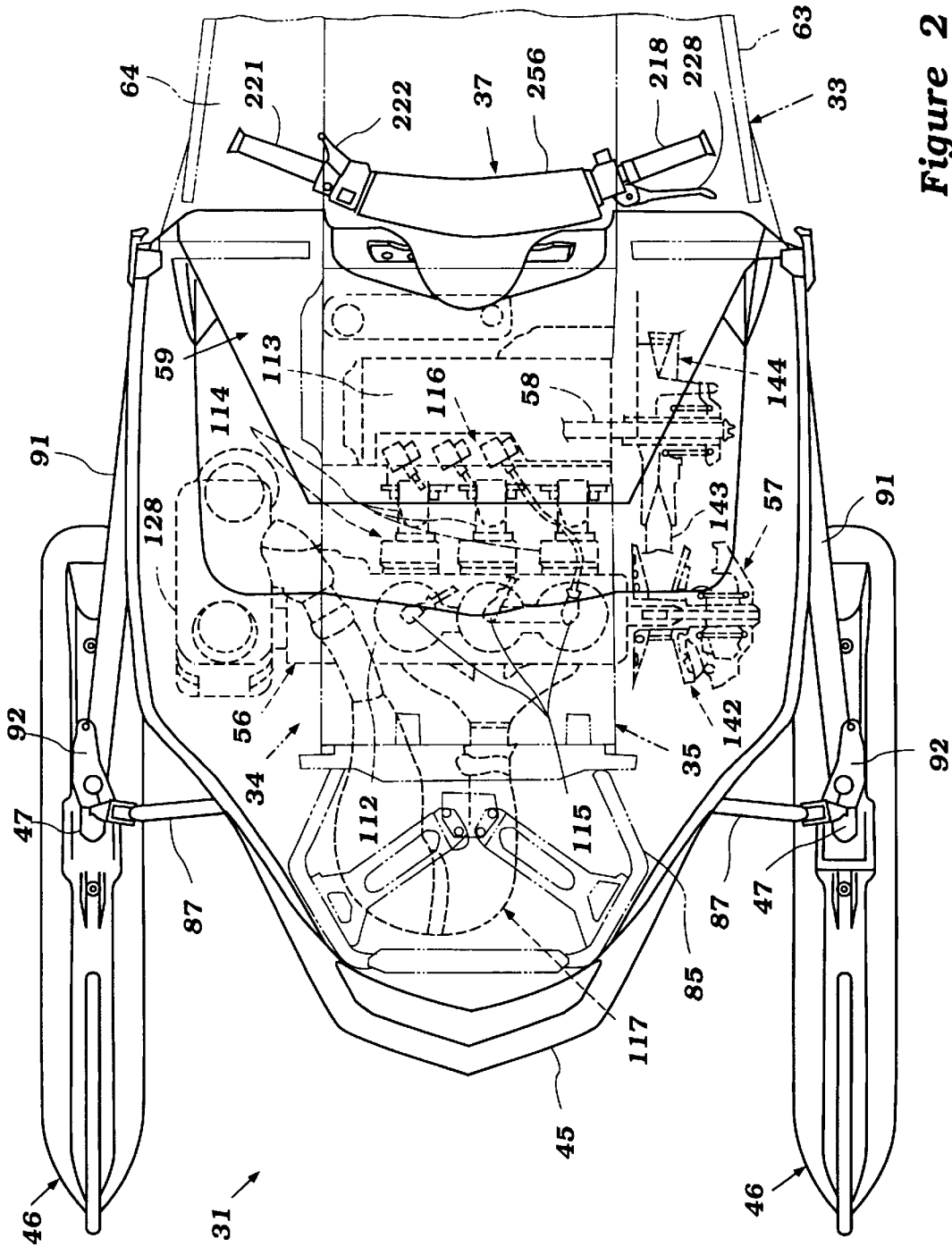


Figure 2

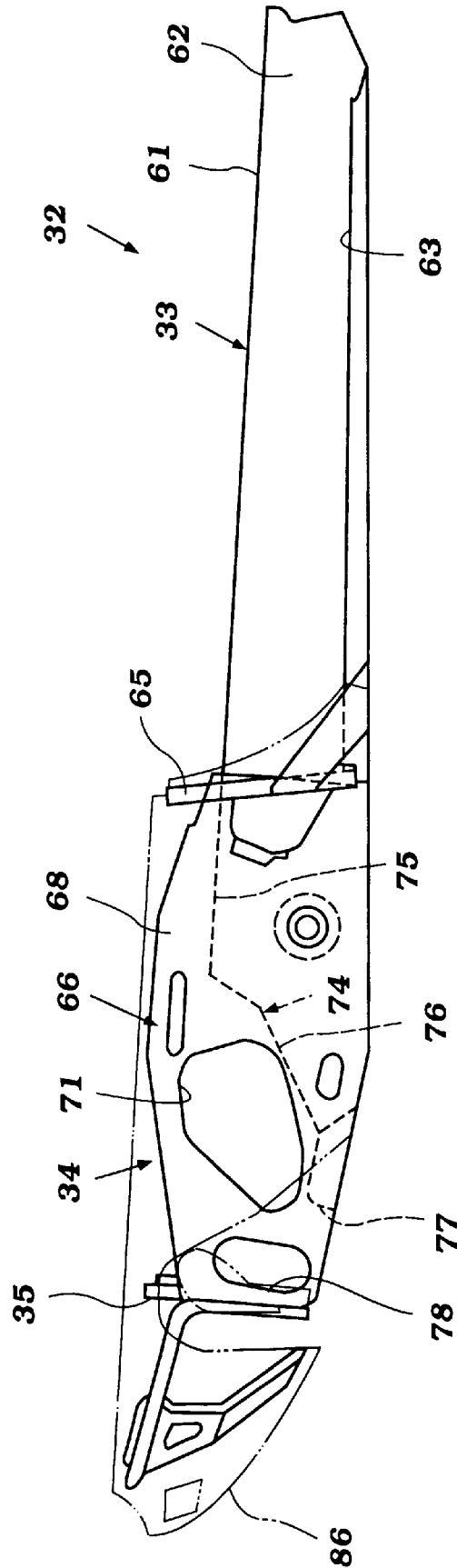


Figure 3

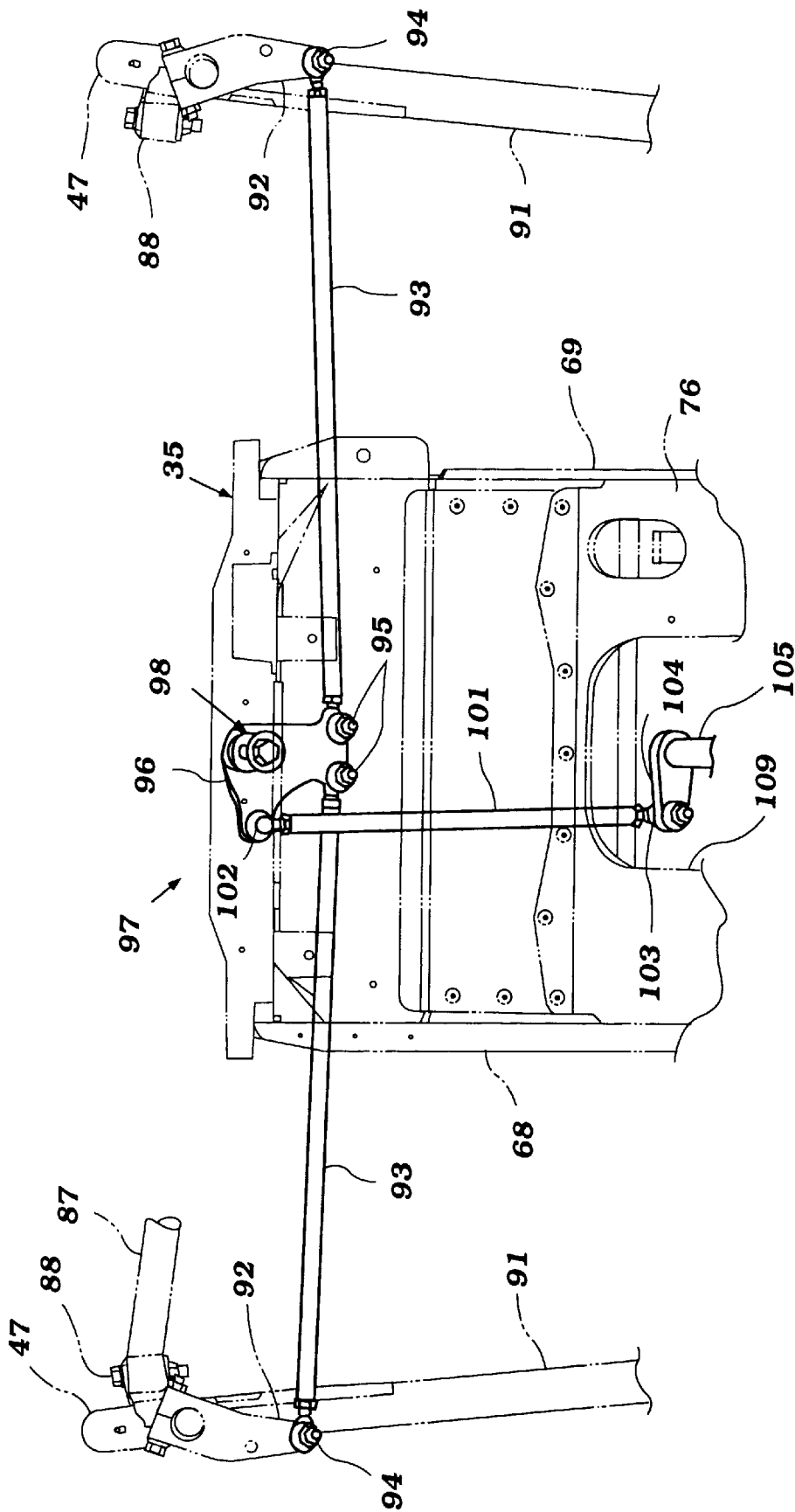


Figure 4

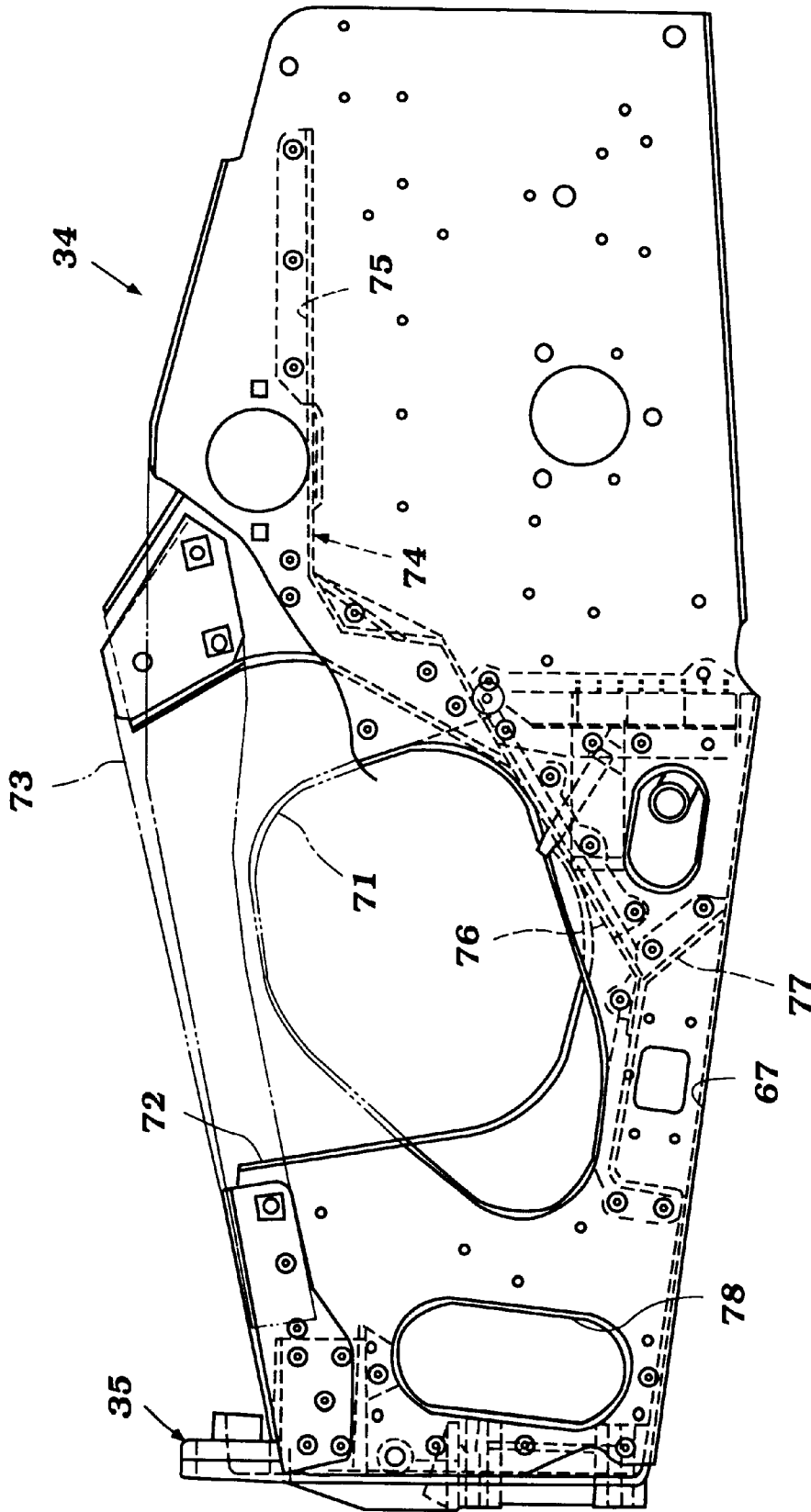


Figure 5

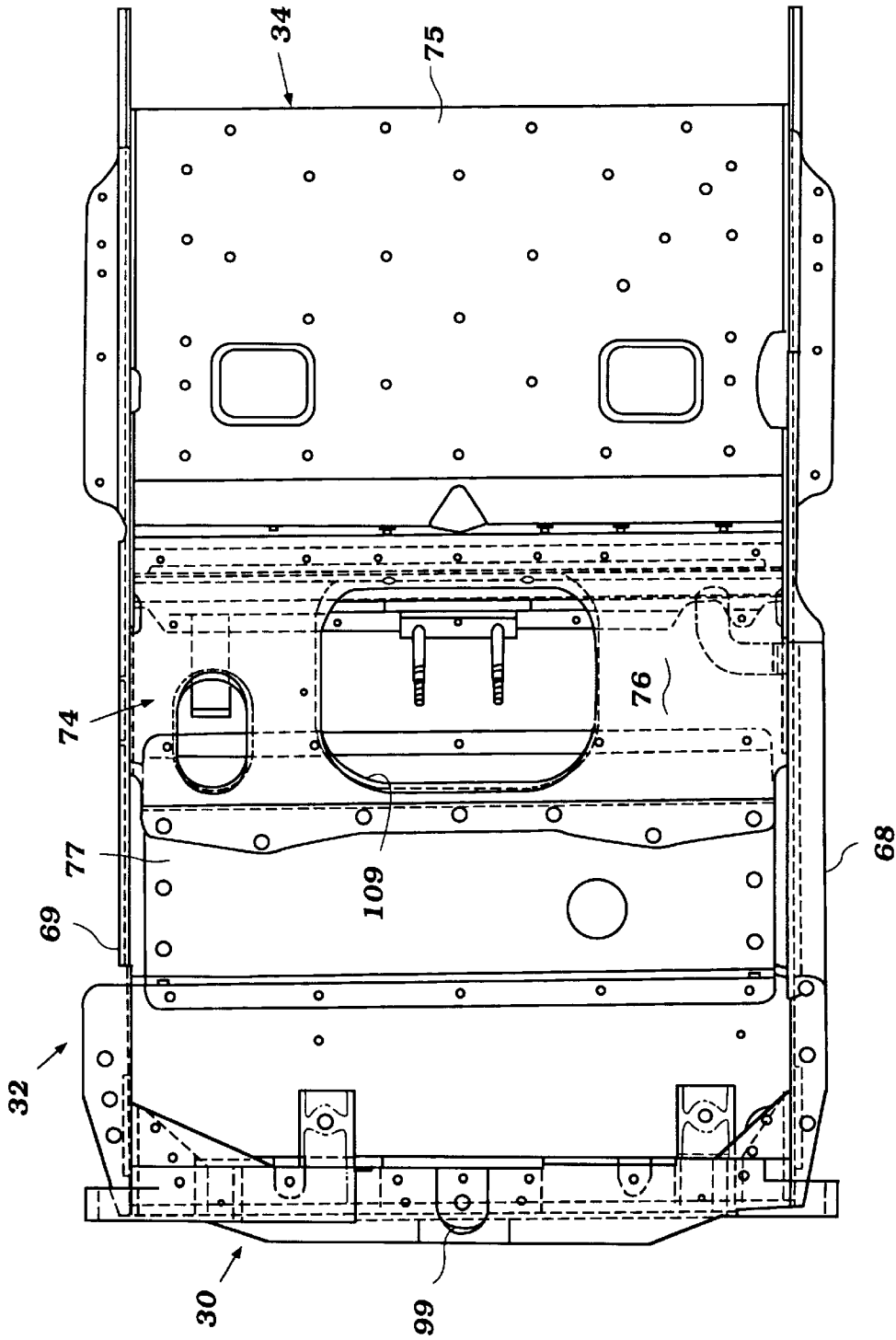


Figure 6

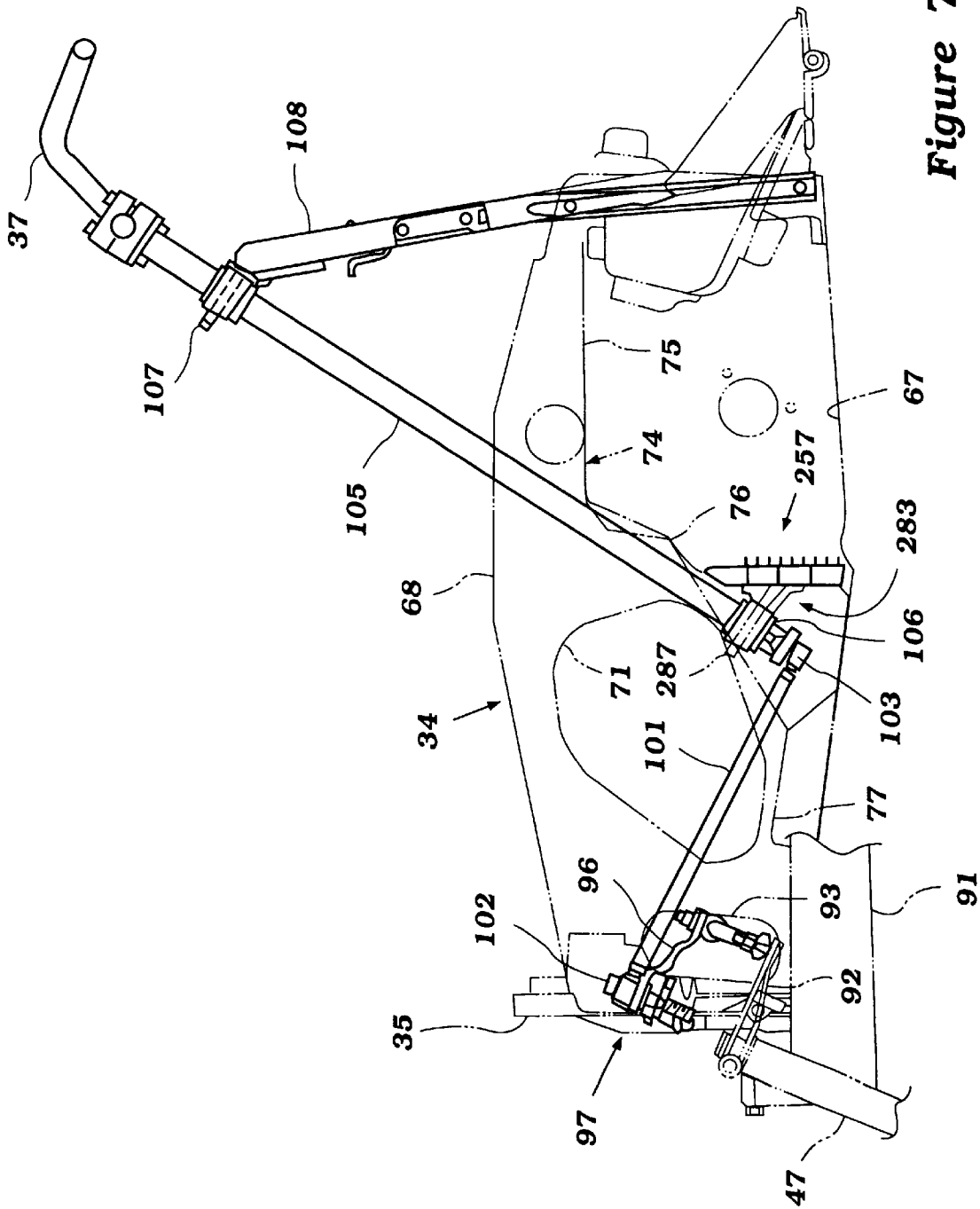


Figure 7

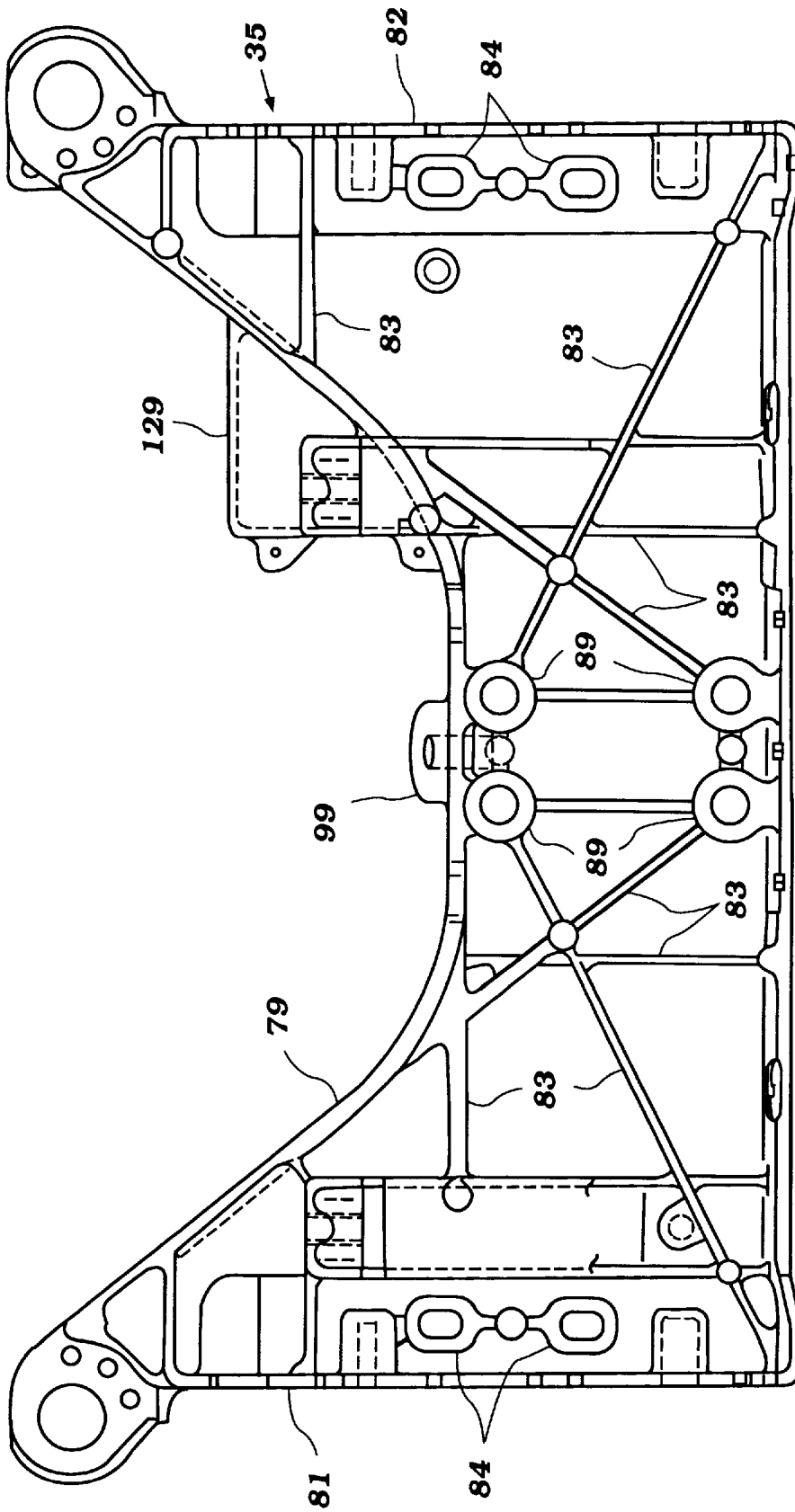
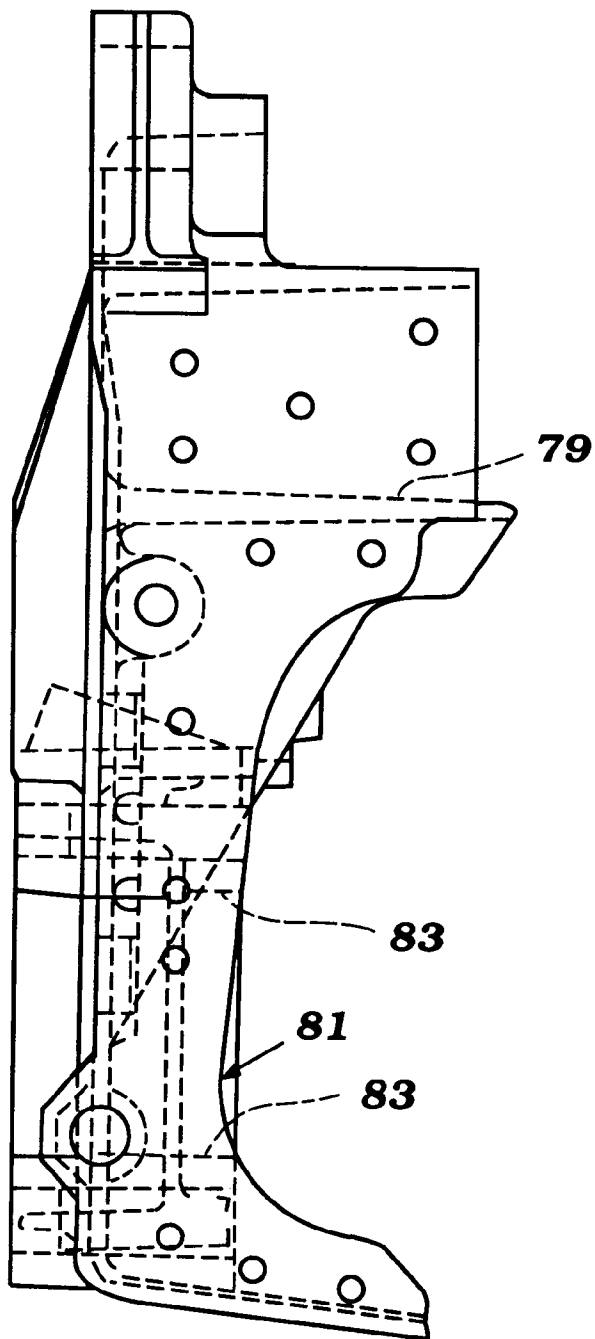


Figure 8



**Figure 9**

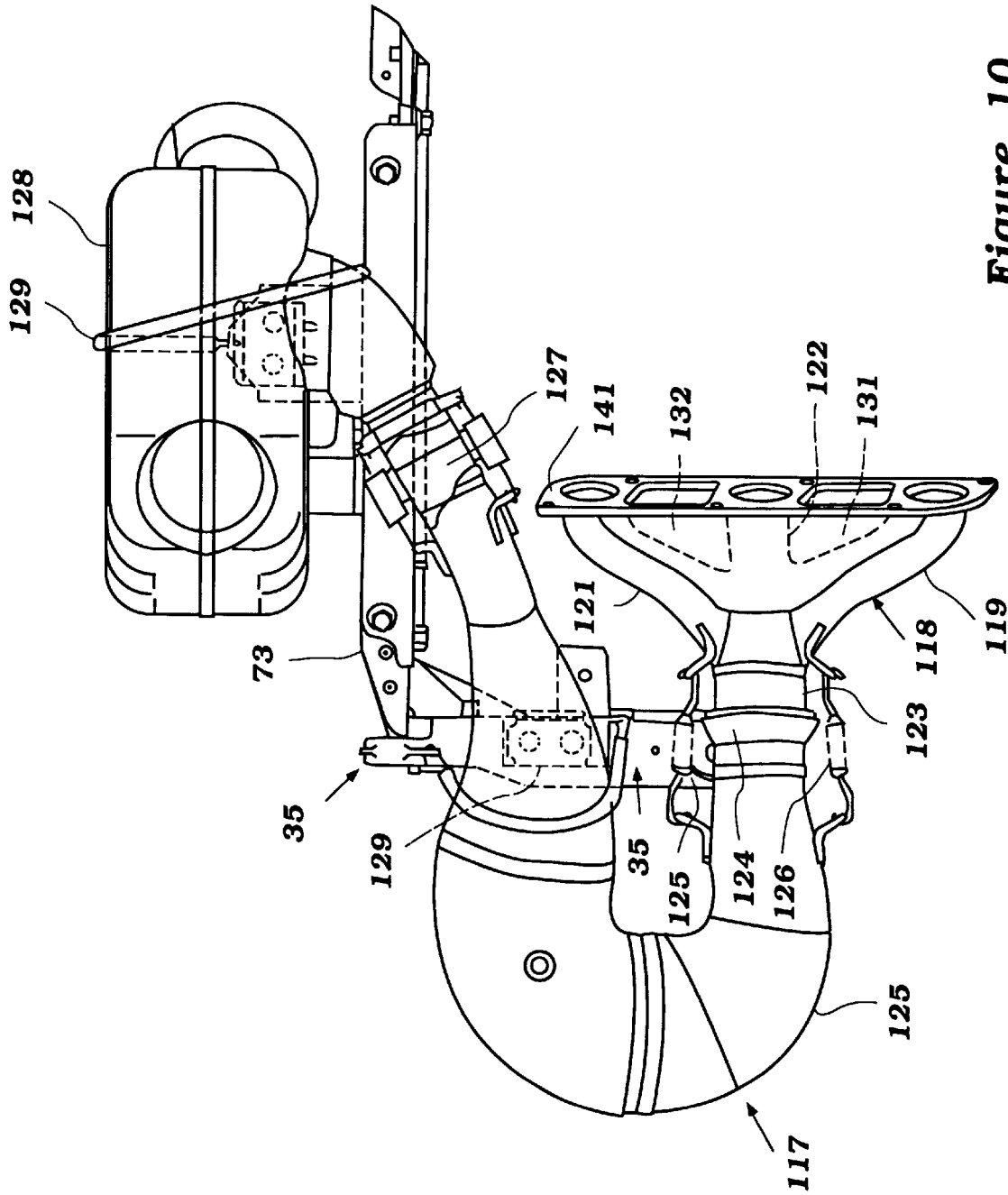


Figure 10

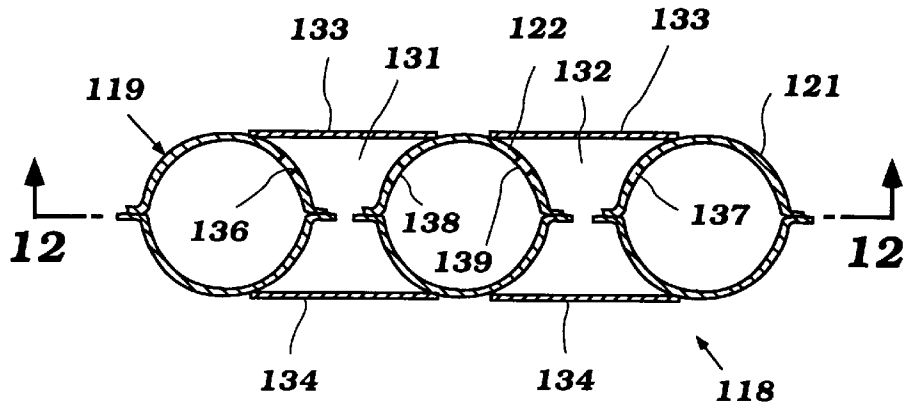


Figure 11

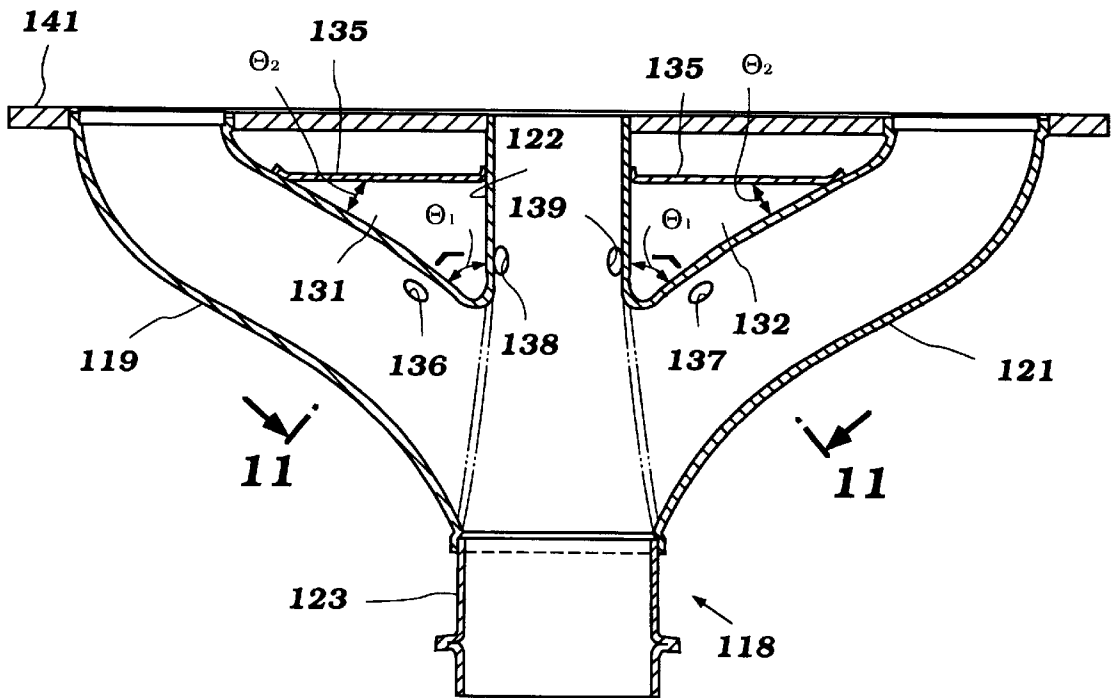


Figure 12

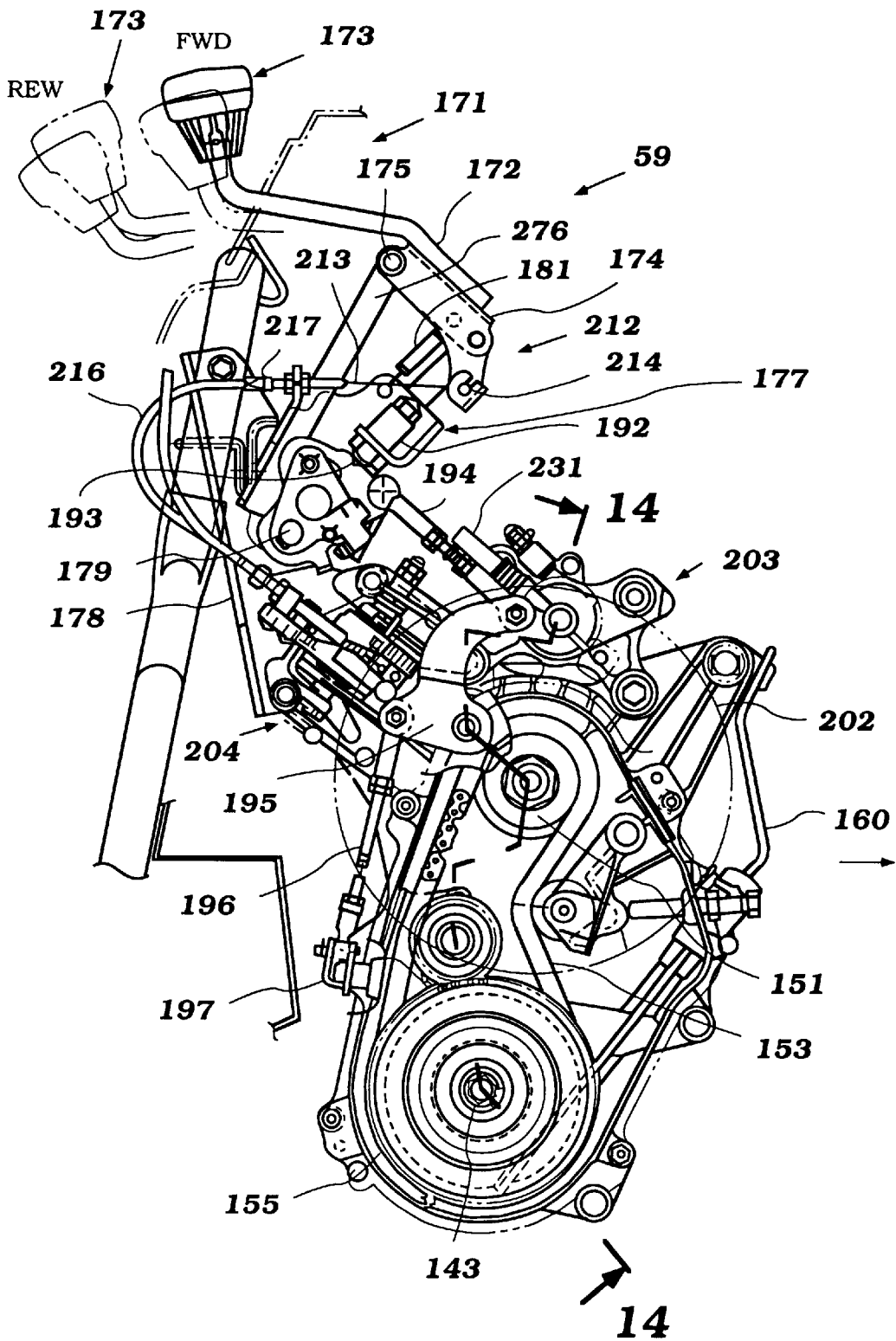


Figure 13

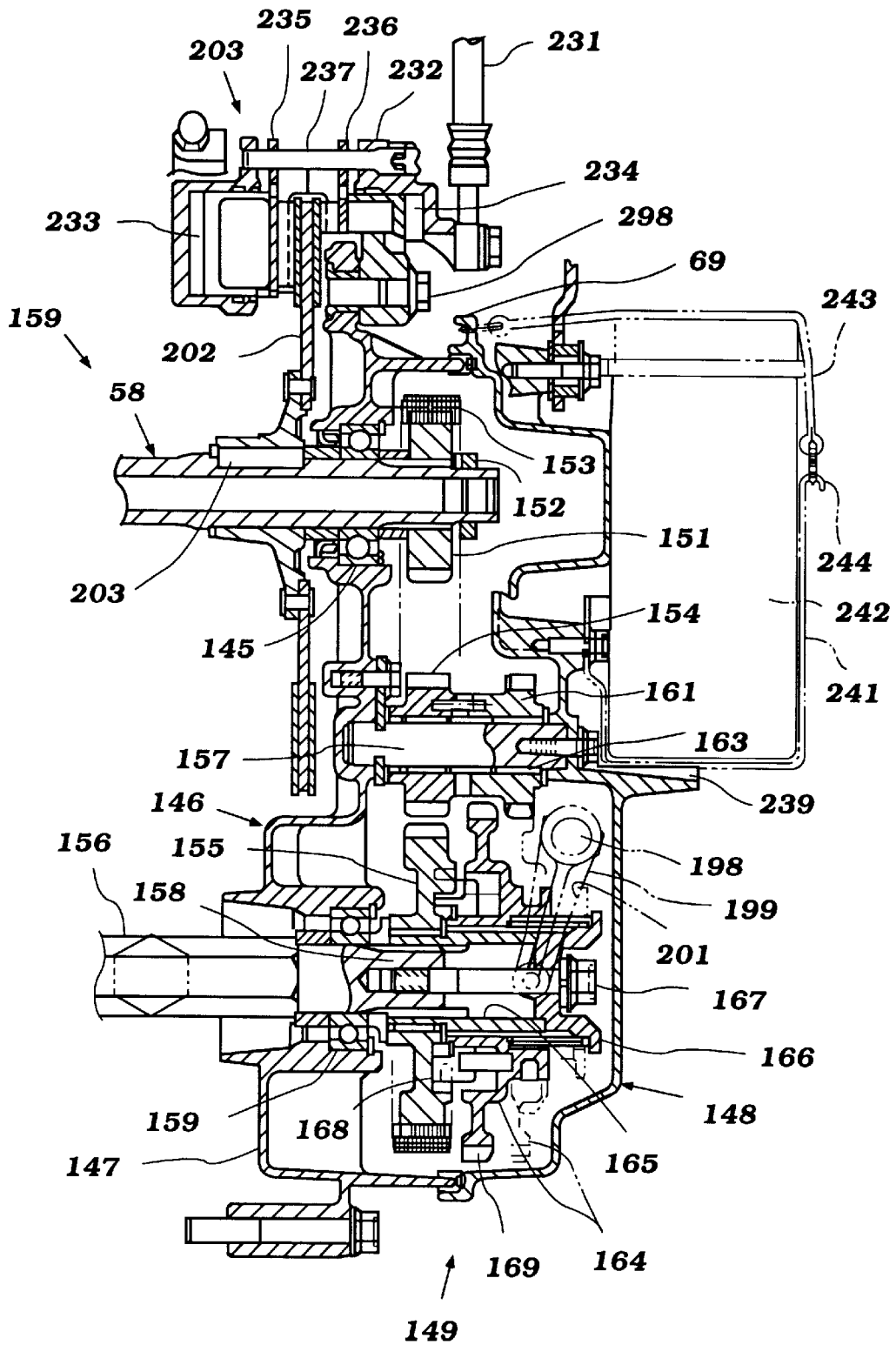


Figure 14

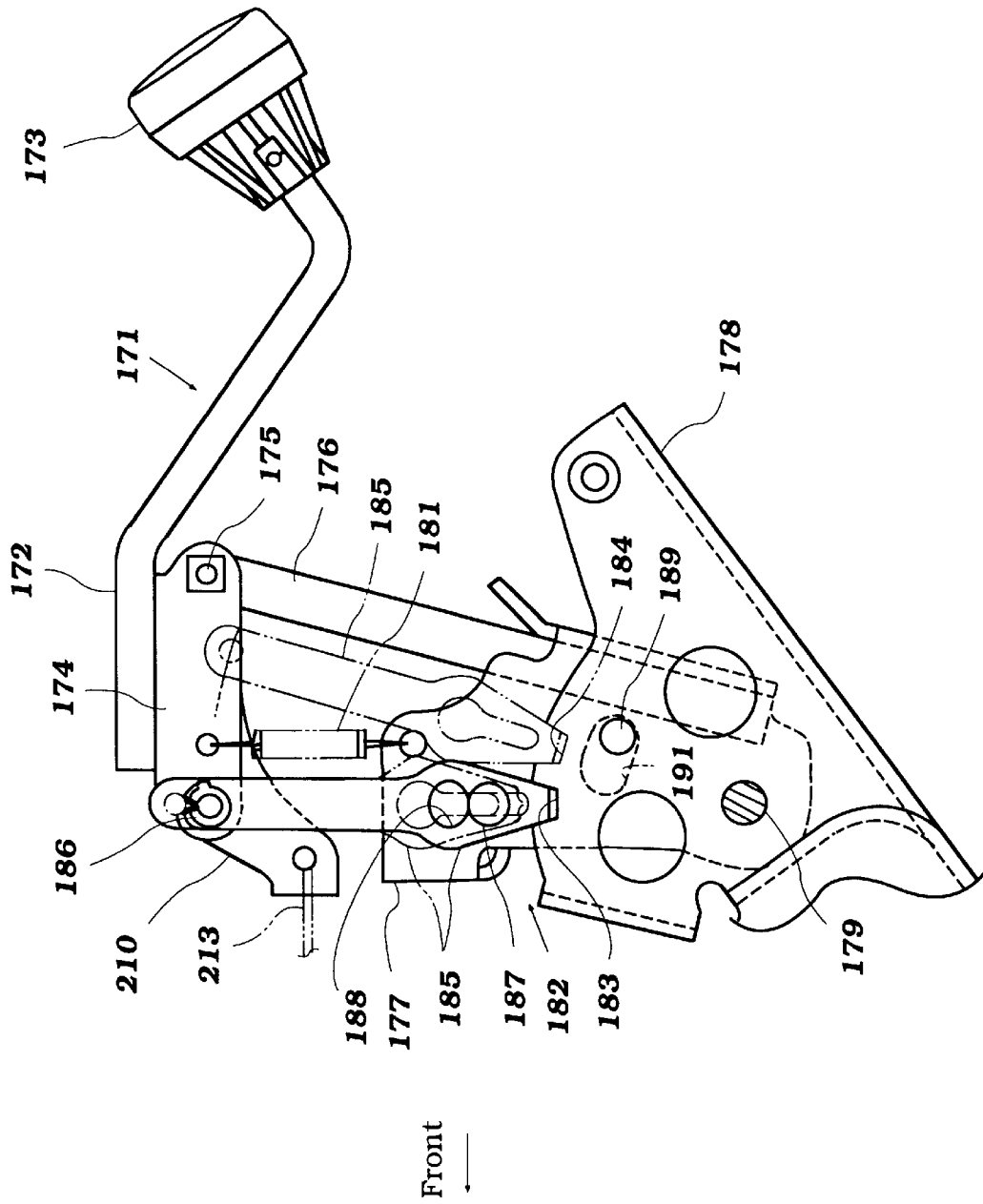
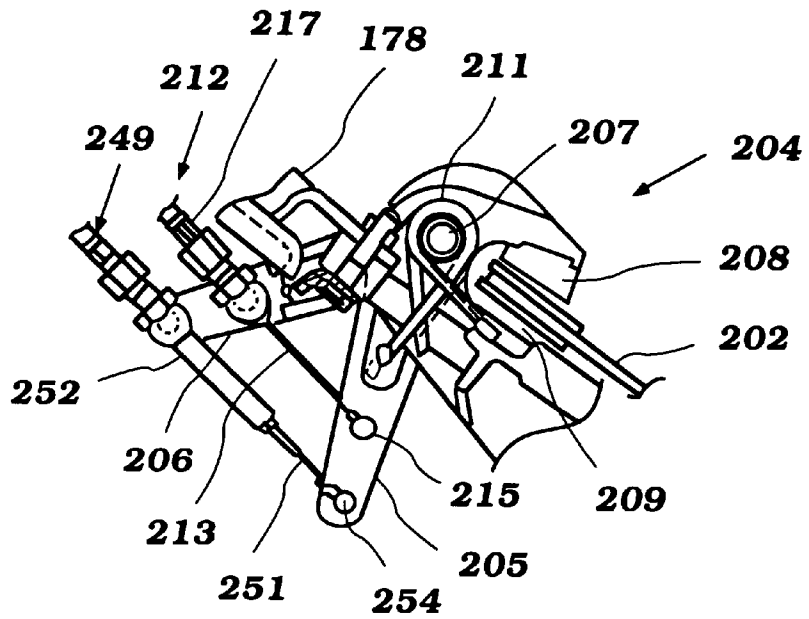
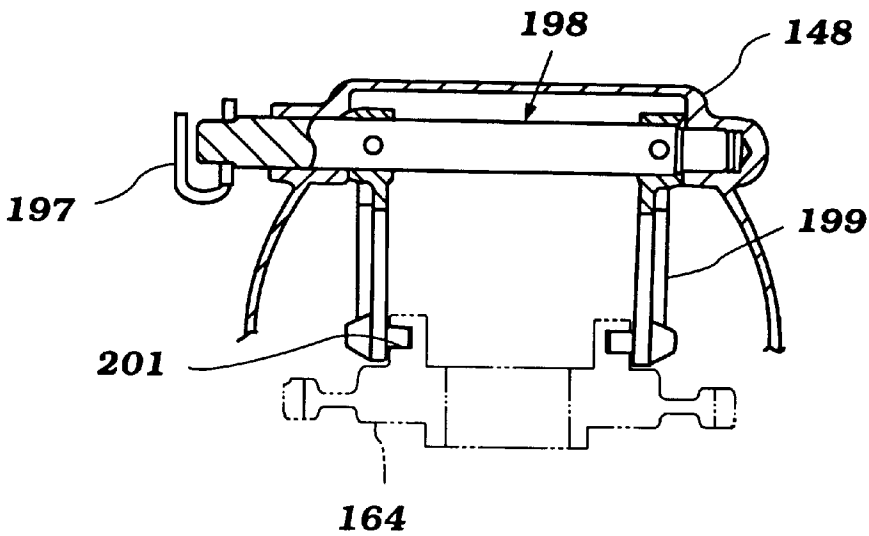


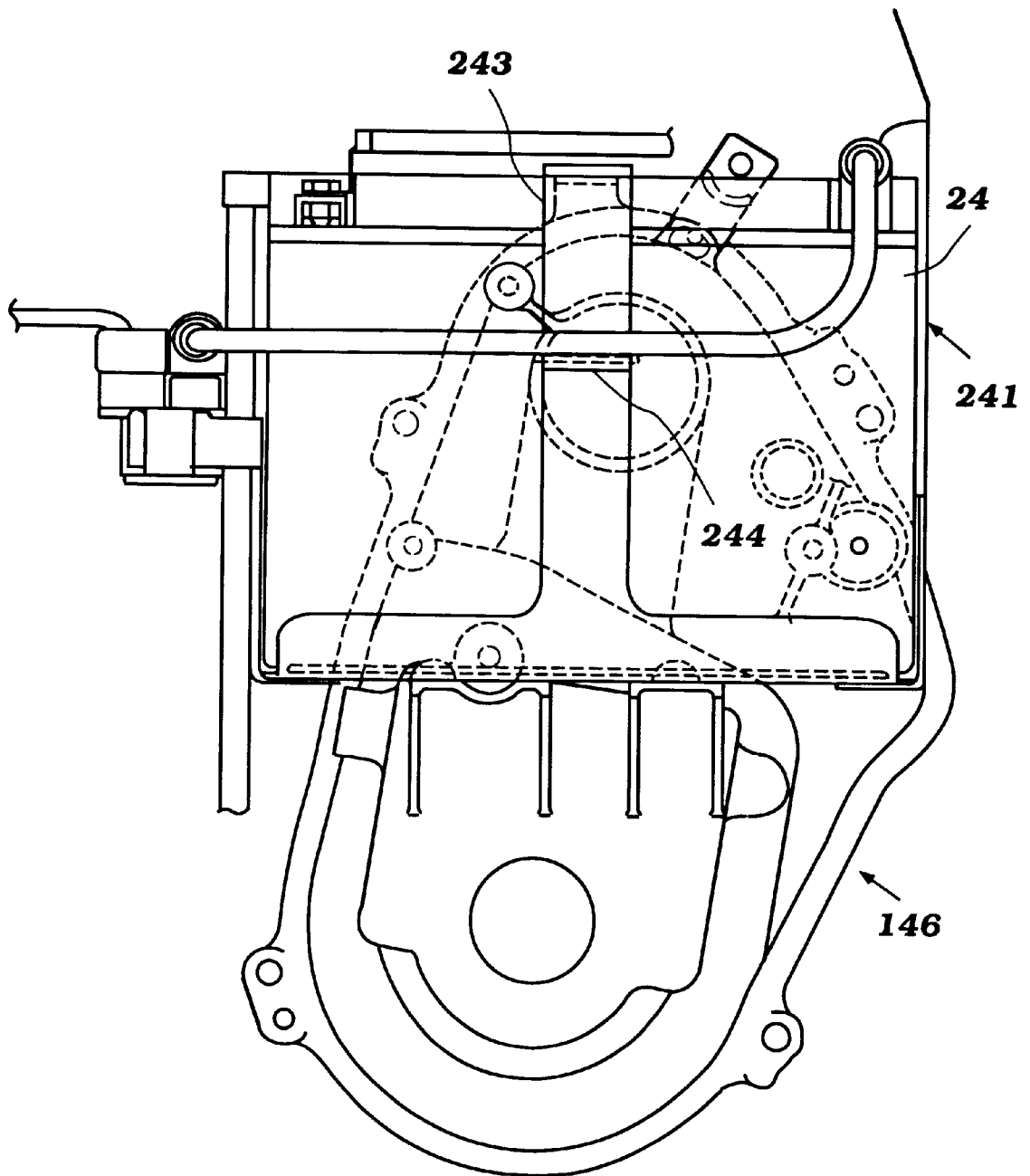
Figure 15



**Figure 16**



**Figure 17**



**Figure 18**

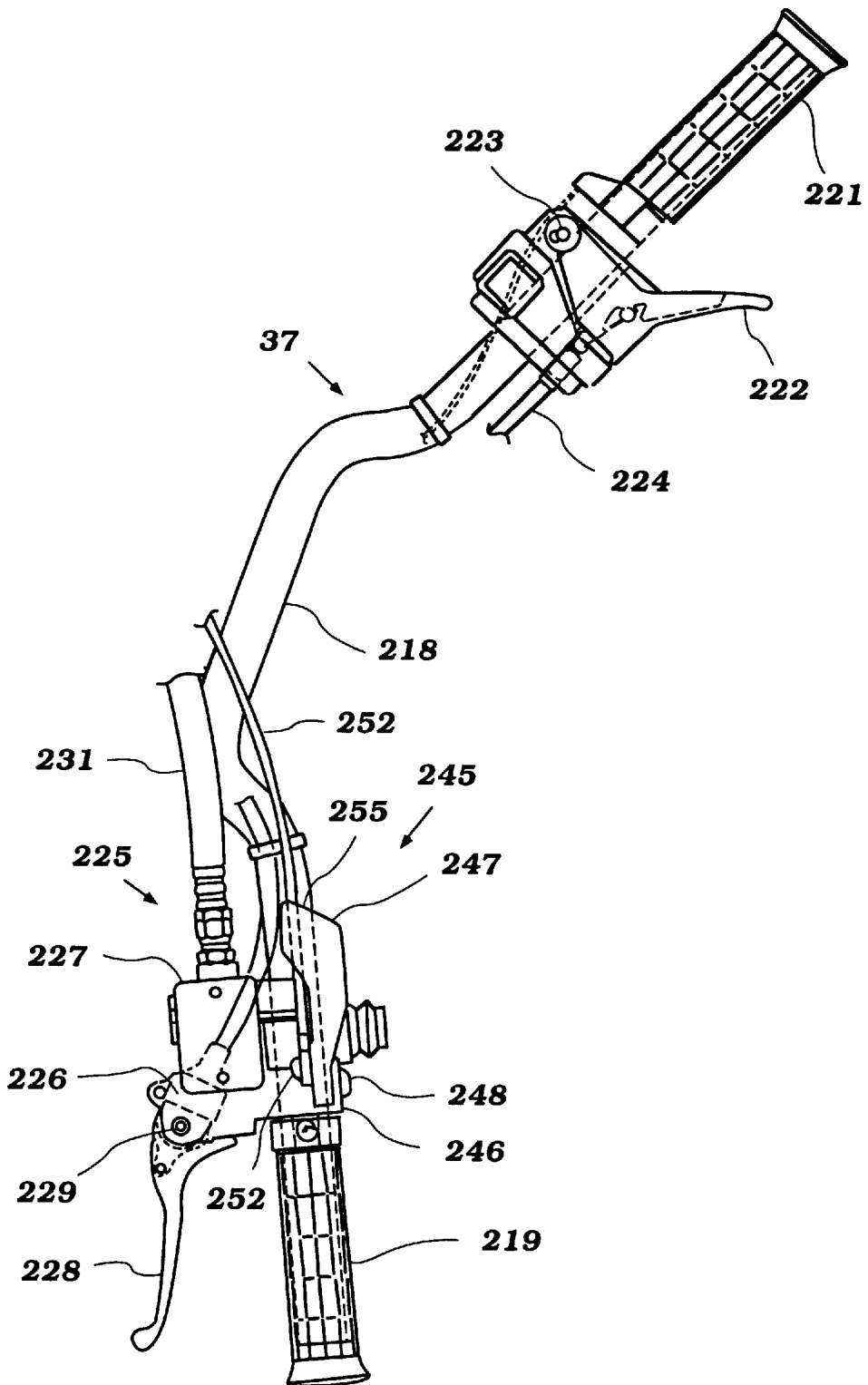


Figure 19

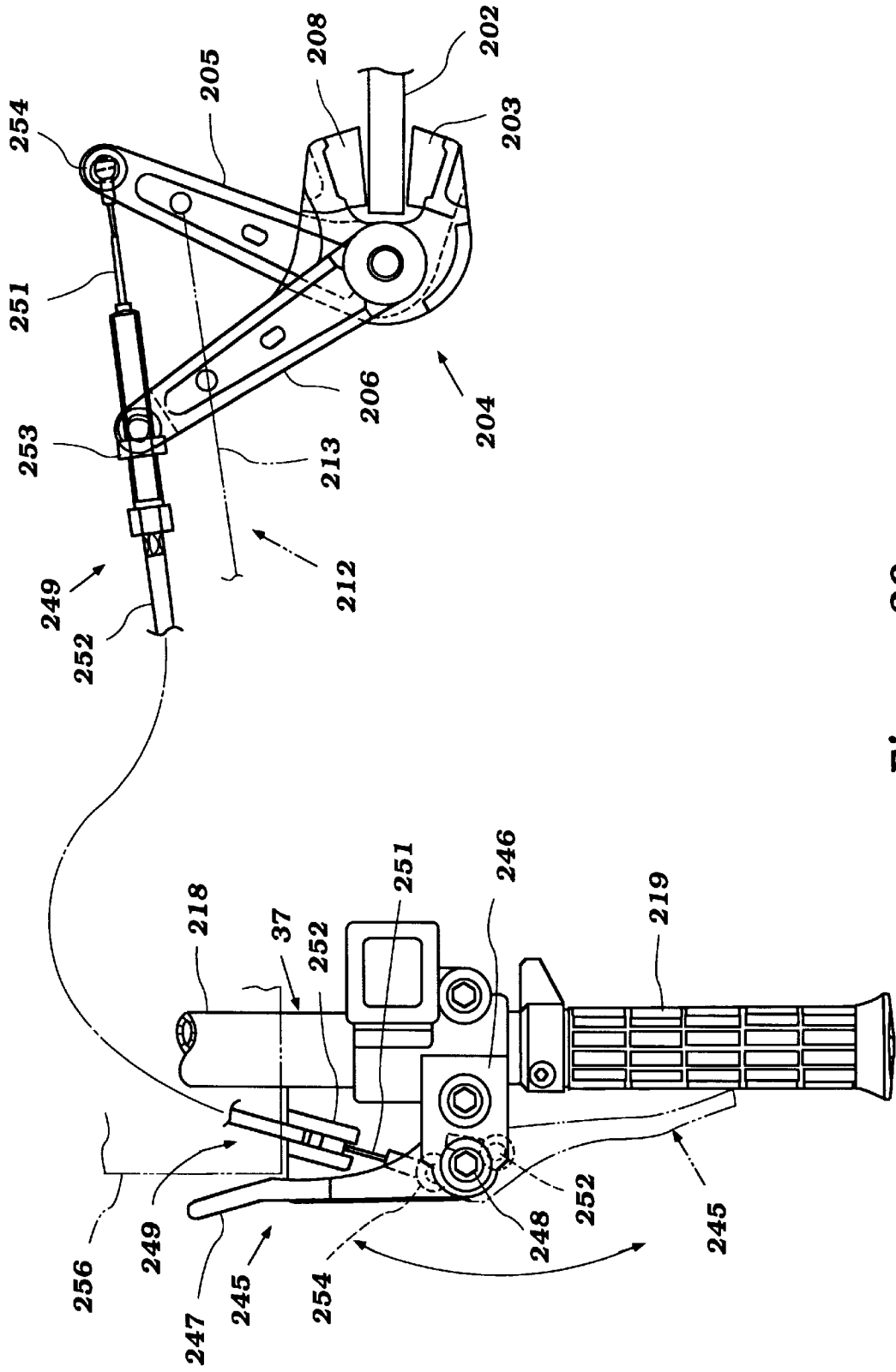


Figure 20

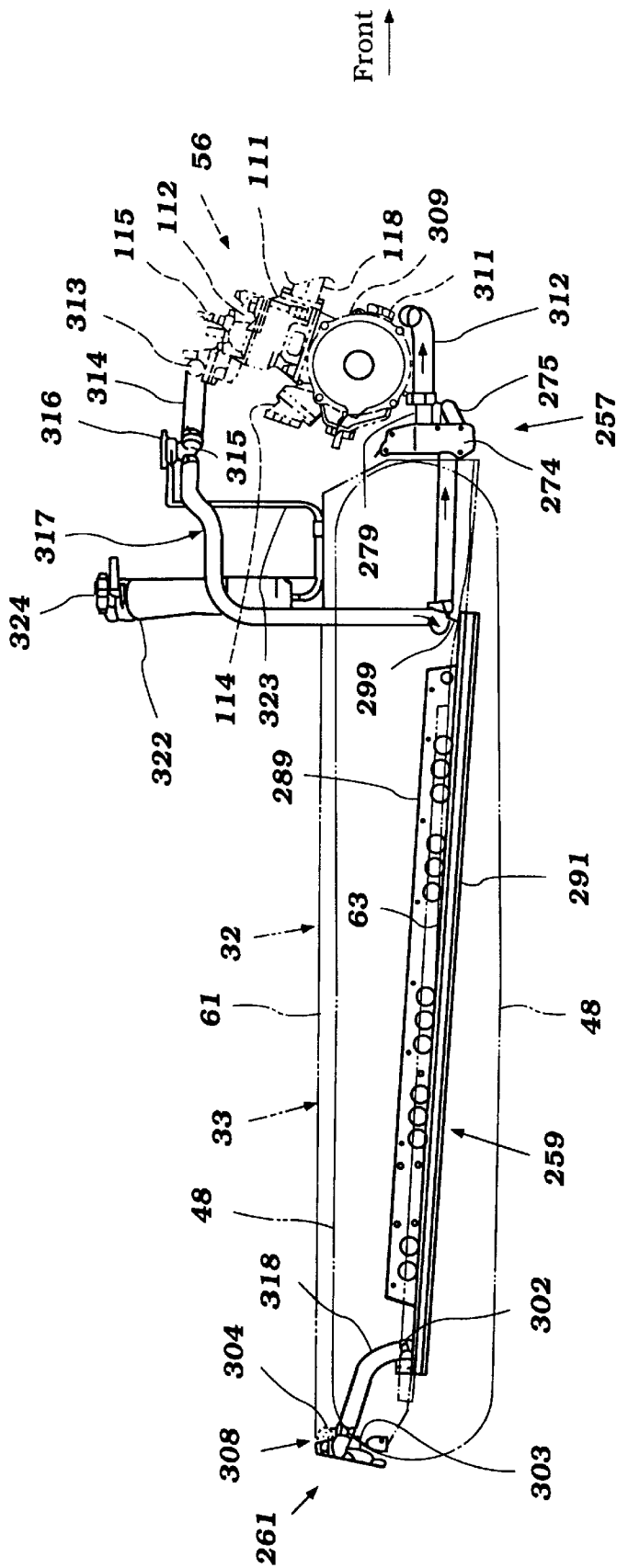


Figure 21

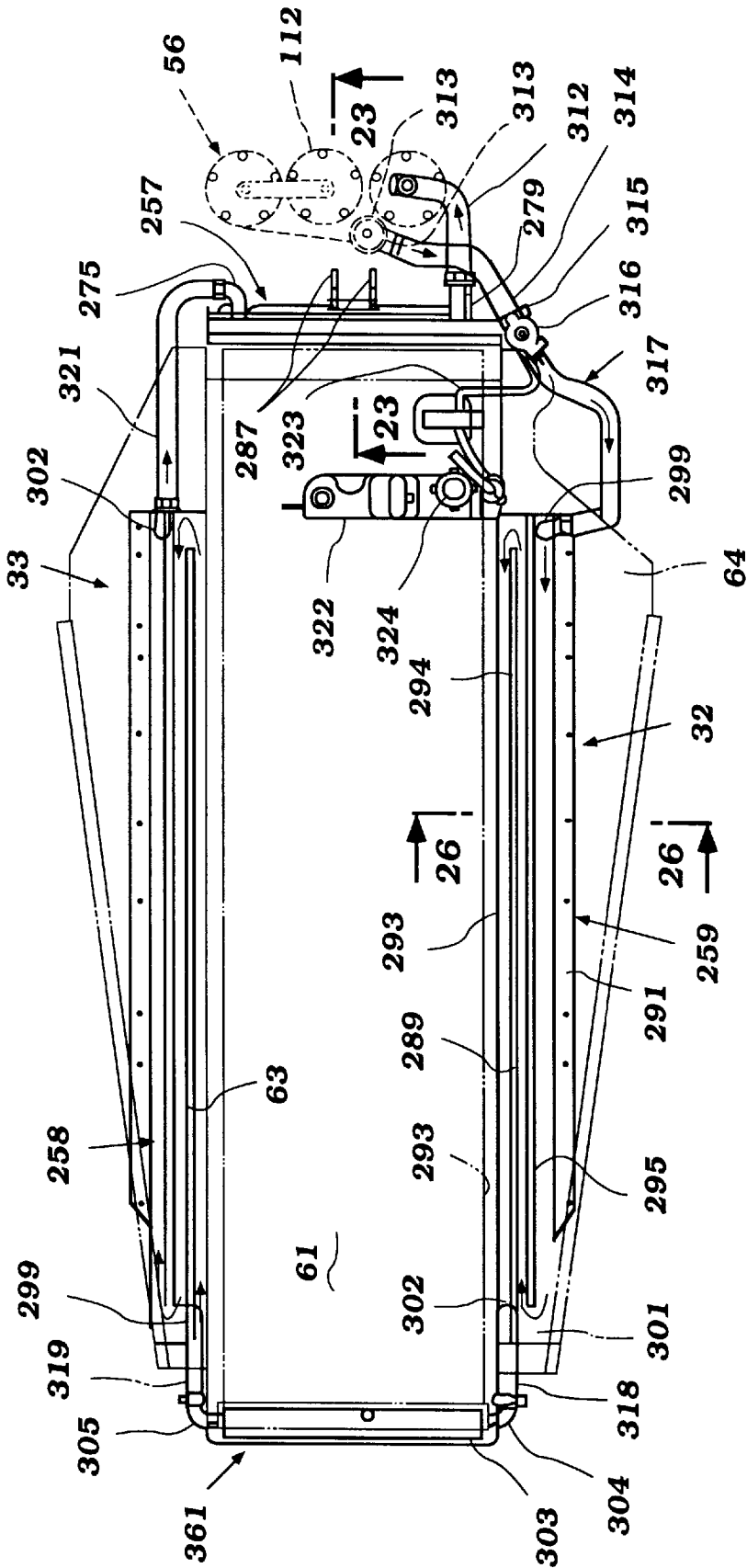
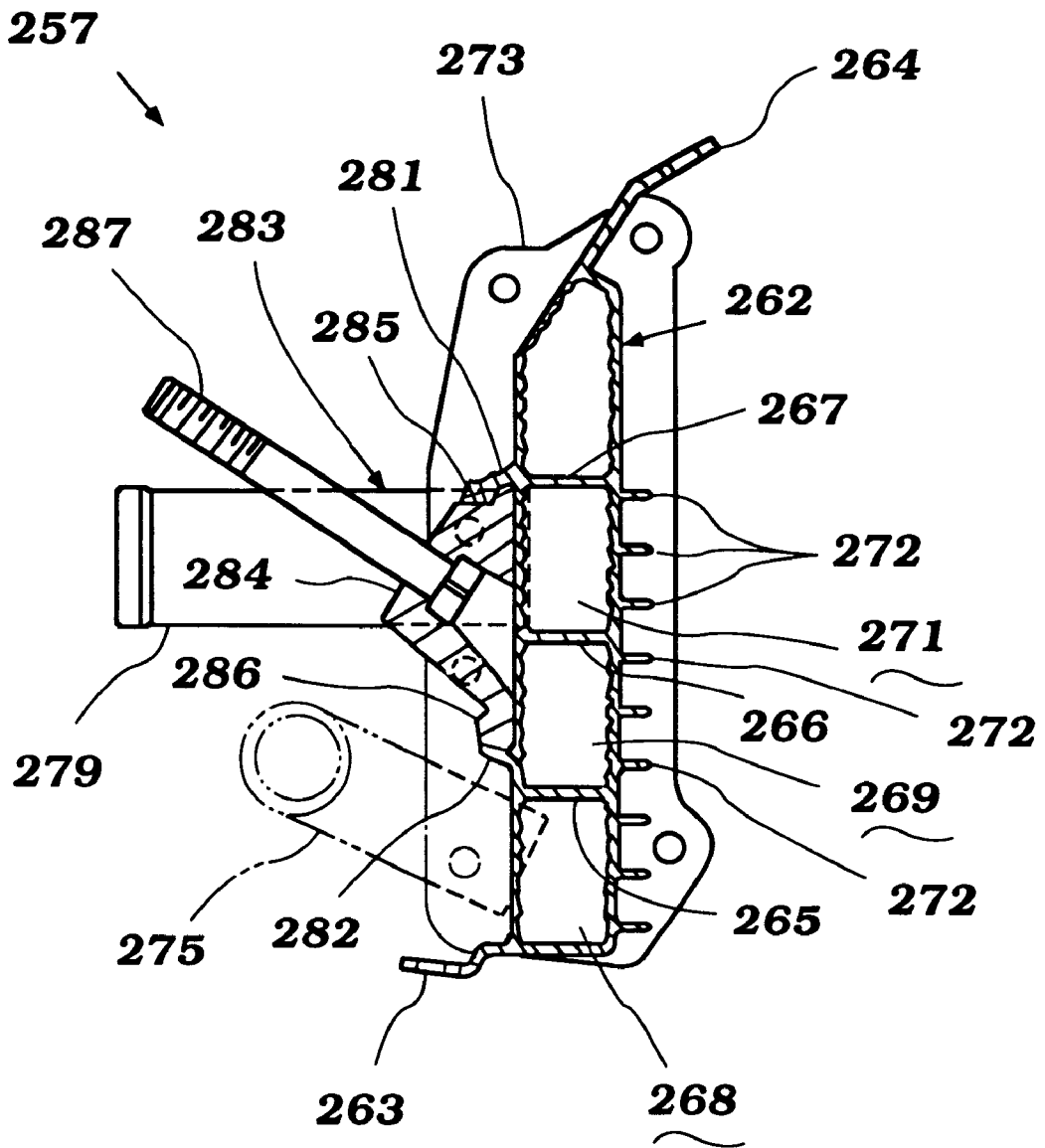


Figure 22



**Figure 23**

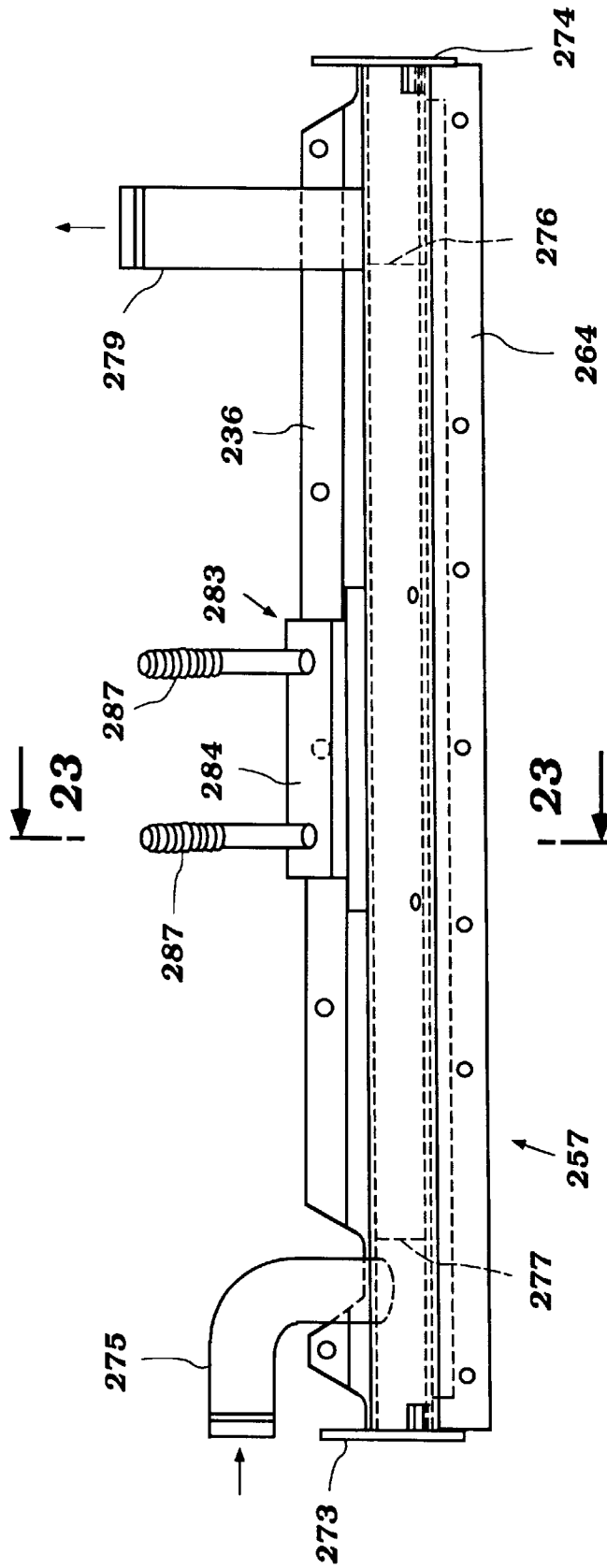
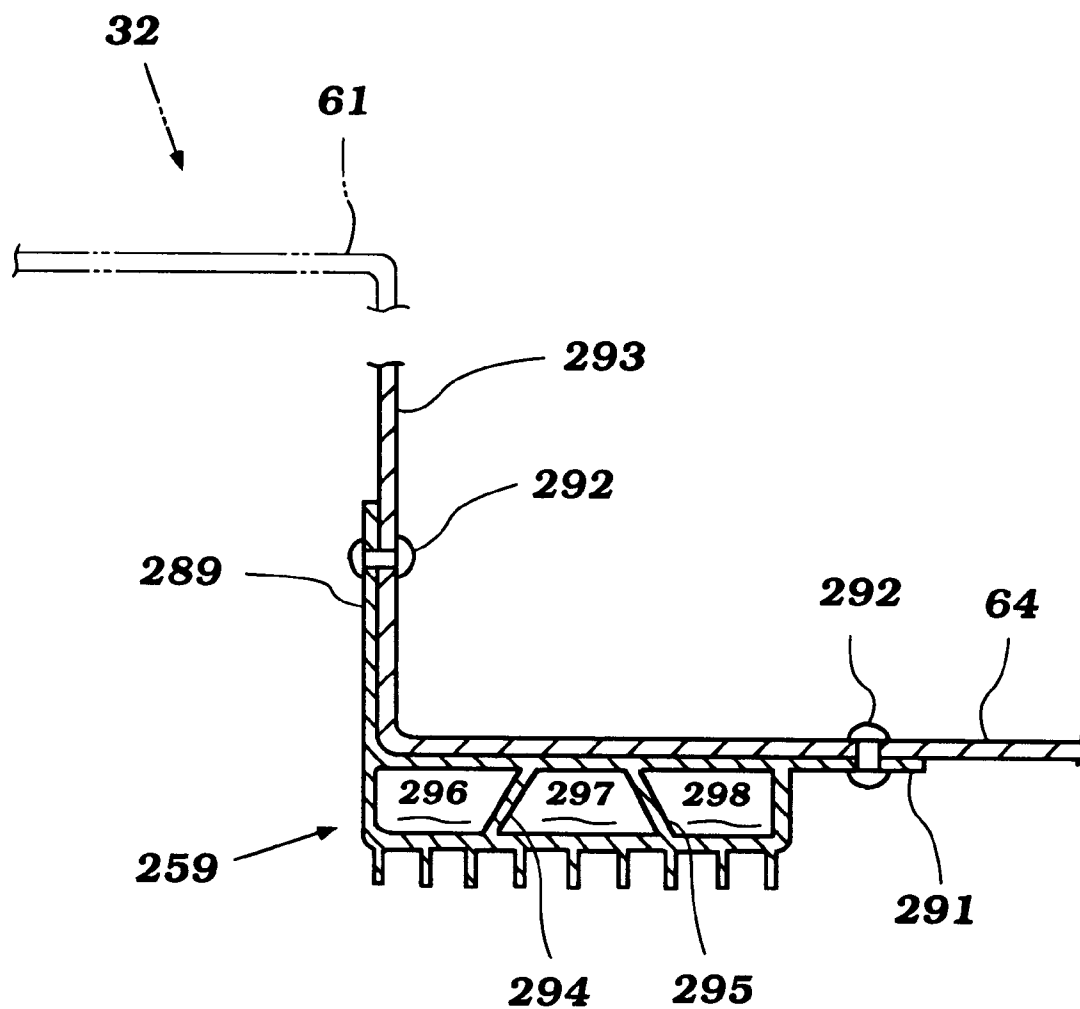


Figure 24



**Figure 25**

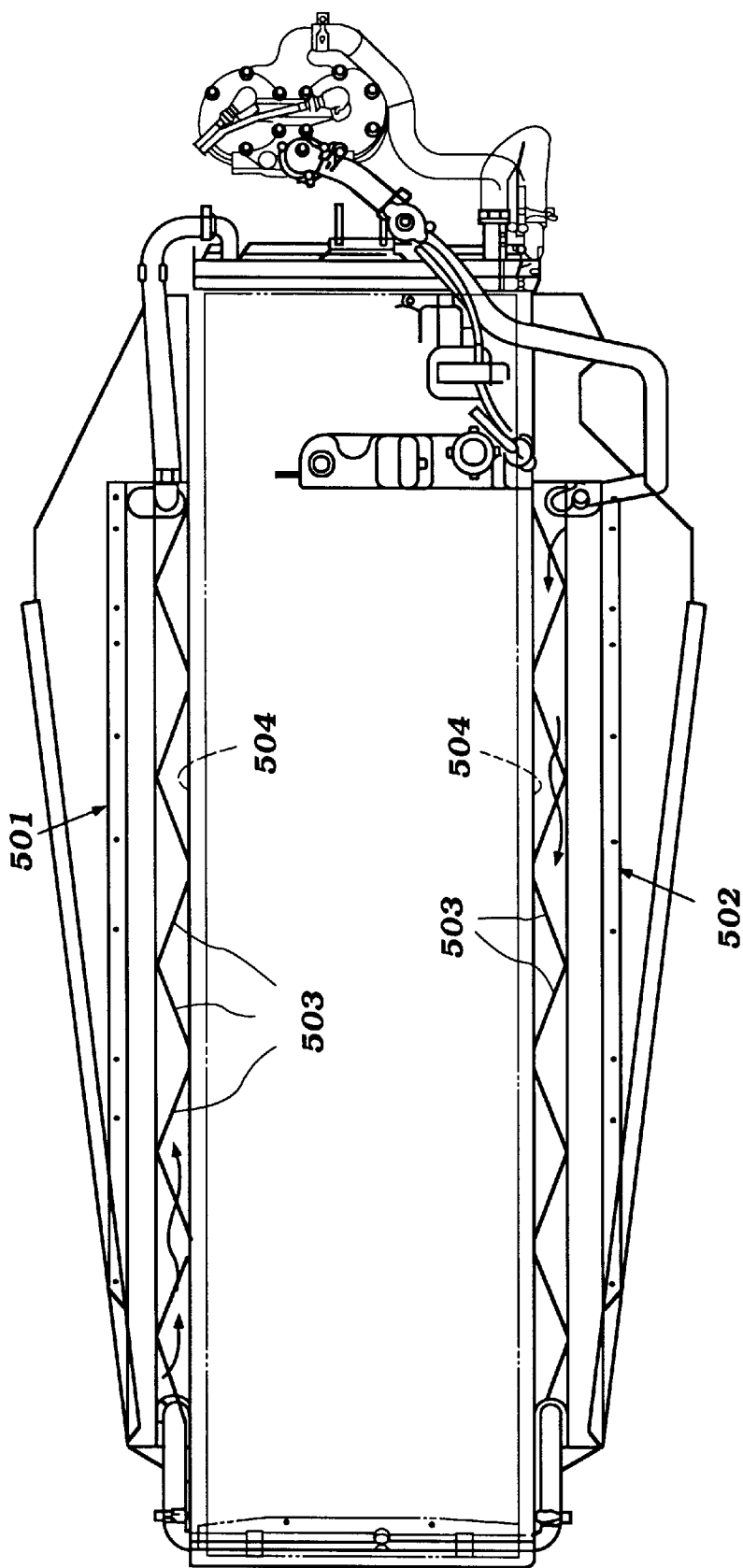
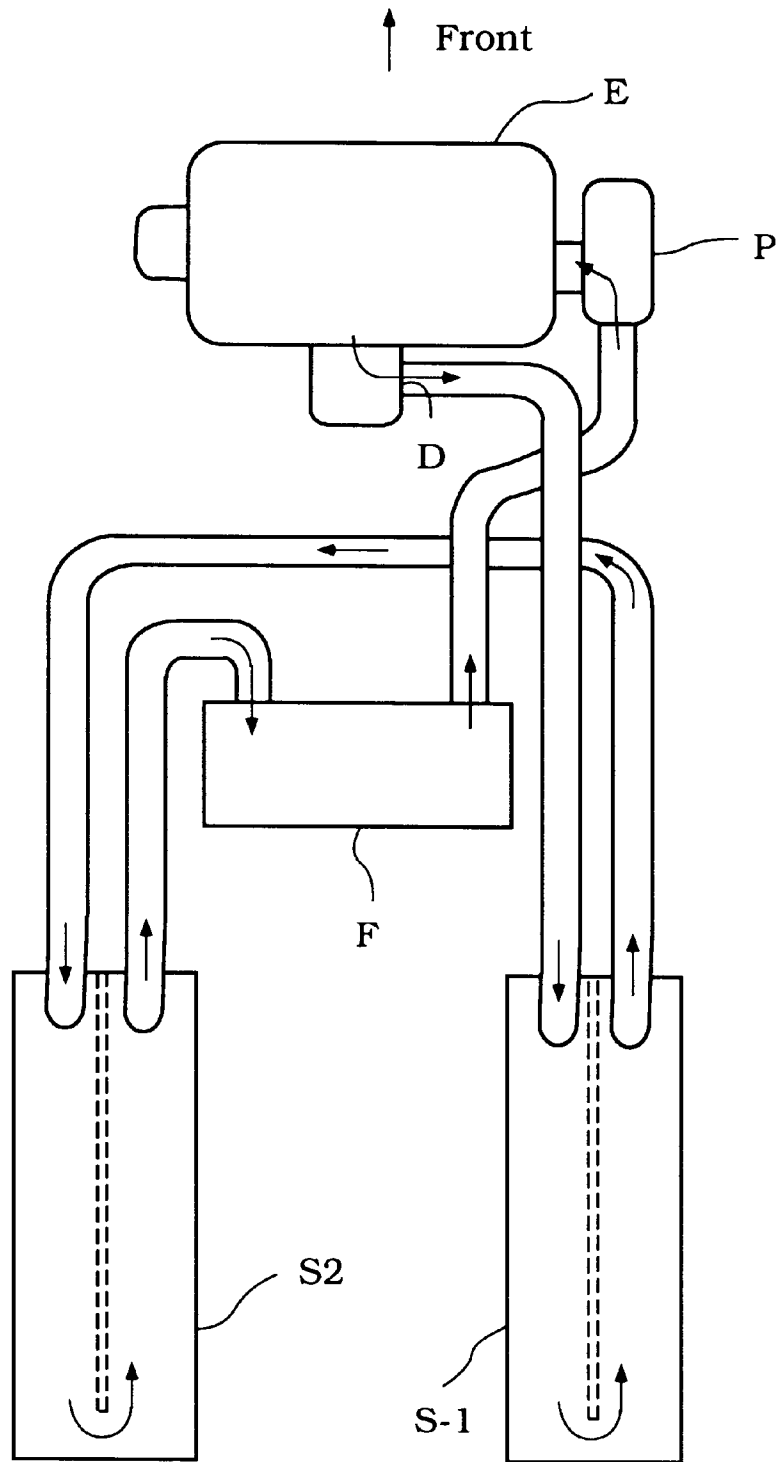
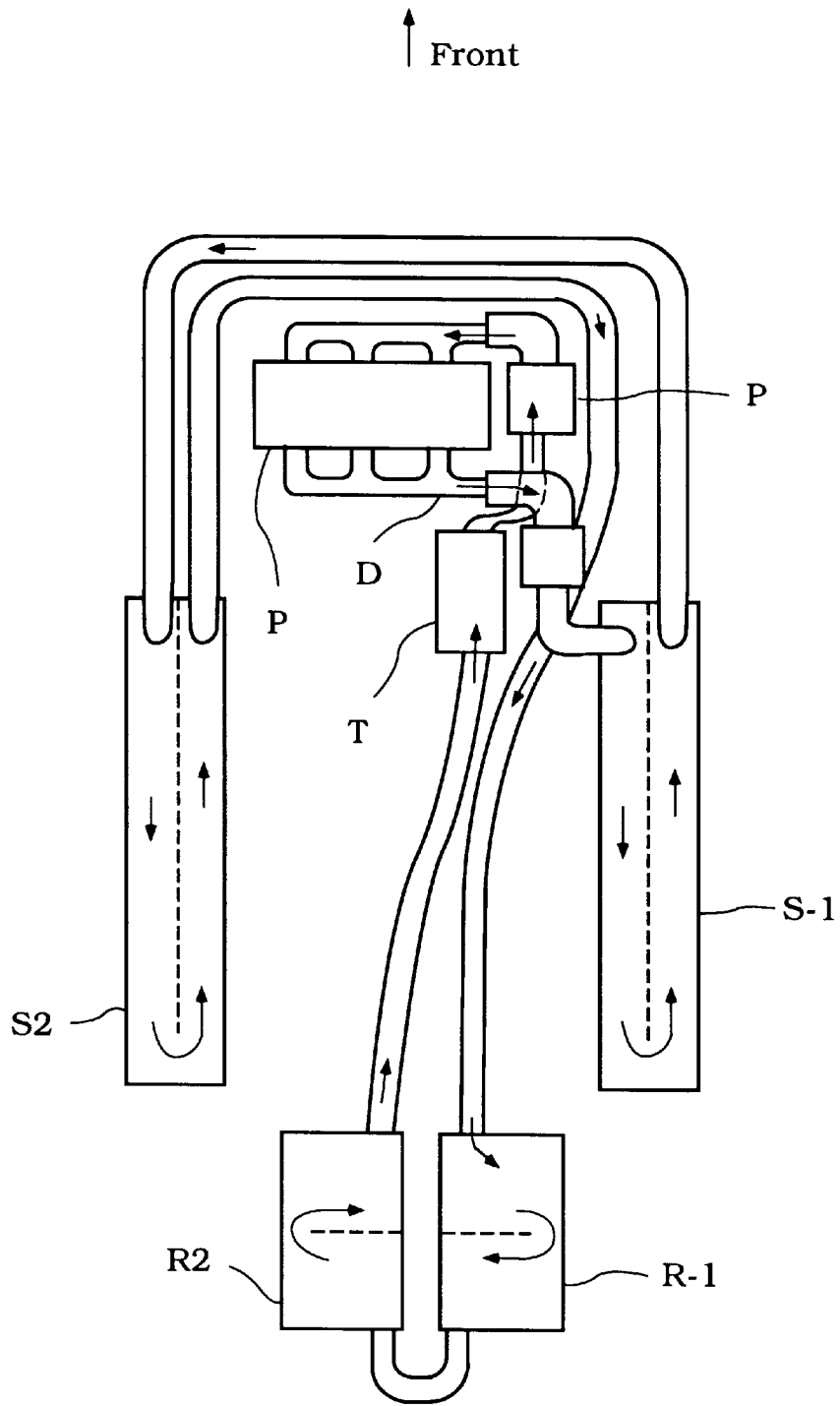


Figure 26



**Figure 27**

*Prior Art*



**Figure 28**

*Prior Art*

## COOLING SYSTEM FOR SNOWMOBILE ENGINE

### BACKGROUND OF THE INVENTION

This invention relates to a snowmobile and more particularly to an improved cooling system for the engine of a snowmobile.

Because of the unique arrangement and utilization of snowmobiles, the cooling system for the engine takes a form which is peculiar to this type of vehicle. For a variety of reasons, it is desirable to utilize a liquid cooled engine. This necessitates the utilization of one or more heat exchangers so as to exchange heat from the engine coolant to the atmosphere to maintain the desired engine operating temperature. Unlike automobiles, it is not practical or necessarily desirable to utilize a tubular type radiator having fins as are employed with other types of vehicle applications. Rather, the heat exchangers are generally formed from box-like housings through which a water path passes and which housings are formed with fins for heat exchange for the atmosphere. Because of the relative or less efficiency of this type of heat exchanger, it has been necessary to employ plural heat exchangers in order to obtain the desired engine temperature control.

Because of the relatively large drive belt and the desirability of avoiding too much airflow through the forward portion of the snowmobile, it has been the practice to mount a pair of heat exchangers one under each of the foot areas of the snowmobile frame. The foot areas of the snowmobile are formed generally from a sheet metal frame member that has an inverted U-shape. The foot areas extend outwardly from the lower ends of the inverted U-shape legs. By mounting the heat exchangers on the underside of these foot areas, some reinforcing can be obtained.

However, the positioning of the heat exchangers in this area adds weight to the outer perimeter of the sheet metal frame and thus, the frame actually may become weakened in a transverse direction.

It also has been the practice to employ either one transverse heat exchanger or a pair of transverse rear heat exchangers through which the liquid is circulated. These arrangements further complicate the conduits required for the cooling system, as may be best understood by reference to FIGS. 27 and 28 which show two prior art-type of constructions of the aforementioned type, respectively. These two views are schematic top plan views of the snowmobile cooling systems with the running components of the snowmobile removed in order to more clearly show the construction.

In each embodiment of the prior art, a transversely extending water cooled internal combustion engine, indicated generally by the reference character E, is placed at the front of the snowmobile. A pair of side radiators S1 and S2 are mounted and located under the foot areas at the side of the seating area in the snowmobile. These side heat exchangers S1 and S2 are of the double pass type in that coolant is entered into one end of each heat exchanger flows along the length of the heat exchanger, reverses direction and exits at the other side of the front of the heat exchanger.

In addition in one prior art construction as seen in FIG. 27, a transverse front heat exchanger F is provided. The engine E is provided with a coolant pump P that circulates the coolant through the cooling jacket of the engine through an inlet. The coolant that has passed through the engine cooling jacket is then discharged through a discharge D. This coolant then flows into the front end of the first side radiator S1 rearwardly, reverses and then flows forwardly.

The coolant is then discharged through an extending conduit in the direction shown in the arrows so as to enter the front end of the other side heat exchanger S2. The flow then is along the length of this heat exchanger to the rear, reverses and then returns for discharge into one side of the front radiator F. The coolant then flows across the front radiator F and exits through a conduit to the pump P. The front radiator F may be either of a single or multiple pass type.

It should be apparent from this construction that substantial external conduits are required for the cooling system. In addition, the cooling system may not be provided with adequate surface area for cooling.

FIG. 28 illustrates the second type of prior art construction which has side radiators S1 and S2 and has a pair of rear radiators R1 and R2. With this type of system, the coolant discharged from the engine discharge D is again delivered to the front of the side radiator S1, flows rearwardly and then forwardly to exit through a crossover pipe extending across the front of the engine and into the front side of the second side radiator S2. This flow then flows rearwardly and forwardly. A discharge pipe carries the coolant from this radiator across the front of the engine and back to the front side of the first rear radiator R1.

An external pipe causes the coolant that is passed through the radiator R1 to pass through the radiator R2 and then back to the inlet of the pump. An expansion tank T is disposed in this circuit so as to accommodate variations in fluid volume under different temperatures of the coolant. Again, this system requires substantial external conduits.

It is, therefore, a principal object of this invention to provide an improved cooling system for a water cooled snowmobile engine.

It is a further object of this invention to provide an improved cooling system for the engine of a snowmobile wherein adequate numbers and positioning of heat exchangers may be employed for good cooling.

It is a still further object of this invention to provide a multiple heat exchanger arrangement for cooling a snowmobile wherein the number and length of the external conduits required to interconnect the various heat exchangers with the engine can be substantially reduced.

It is a still further object of this invention to provide an improved cooling system for a snowmobile wherein the heat exchangers are utilized in such a way so as to provide substantial reinforcing for the frame.

### SUMMARY OF THE INVENTION

This invention is adapted to be embodied in a snowmobile that is comprised of a frame assembly. A liquid cooled internal combustion engine is supported at the front of the frame assembly. A drive belt is disposed beneath the frame assembly to the rear of the engine and is supported for suspension movement relative to the frame assembly. A seat is mounted upon the frame assembly above the drive belt. A pair of foot areas are carried by the frame assembly on opposite sides of the seat. A front heat exchanger extends transversely across the front of the frame assembly at the front of the drive belt. A pair of side heat exchangers each extend along one surface of a respective one of the foot areas. A rear heat exchanger extends transversely across the frame assembly at the rear of the drive belt. Means are provided for circulating liquid coolant through a cooling jacket of the engine and through the heat exchangers. The side heat exchangers are integral to the frame assembly for reinforcing the frame assembly. At least one of the front and

rear heat exchangers is also integral with the frame assembly for reinforcing the frame assembly.

#### BRIEF DESCRIPTION OF THE DRAWINGS

FIG. 1 is a side elevational view of a snowmobile constructed in accordance with the invention.

FIG. 2 is an enlarged top plan view showing the forward portion of the snowmobile.

FIG. 3 is a side elevational view of the frame assembly for the snowmobile on a slightly larger scale than that of FIG. 1.

FIG. 4 is a top plan view, in part similar to FIG. 2, but with the snowmobile body broken away and portions of the frame shown in section so as to illustrate a portion of the steering mechanism for the front skis.

FIG. 5 is an enlarged side elevational view looking in the same direction of FIG. 3, but showing only the front portion of the frame.

FIG. 6 is a top plan view of the front frame portion on the same scale as FIG. 5.

FIG. 7 is a side elevational view of the same components shown in FIG. 4, but on a slightly smaller scale, to illustrate the steering mechanism for the front skis.

FIG. 8 is an enlarged rear elevational view of the front bulkhead casting for the front frame sub assembly.

FIG. 9 is a side elevational view of the front frame bulkhead casting.

FIG. 10 is a top plan view of the exhaust manifold and exhaust system for the engine with only the exhaust system mounting components of the snowmobile frame illustrated.

FIG. 11 is a cross-sectional view of the exhaust manifold taken along the line 11—11 of FIG. 12.

FIG. 12 is a cross-sectional view of the exhaust manifold taken generally along the line 12—12 of FIG. 11.

FIG. 13 is a view with portions broken away showing the reversing transmission and control mechanisms therefor.

FIG. 14 is an enlarged cross-sectional view through the reversing transmission mechanism taken along the line 14—14 of FIG. 13.

FIG. 15 is a view looking in the direction opposite that of FIG. 13, but showing only the reversing transmission control actuating lever system.

FIG. 16 is a side elevational view showing the brake mechanism associated with the transmission control and also with the parking brake.

FIG. 17 is a partial cross-sectional view showing the shifting fork of the transmission mechanism and the actuating portion therefor.

FIG. 18 is a view looking in the same direction as FIG. 13, but showing the association of the transmission to the battery for the vehicle and illustrating the battery mounting arrangement.

FIG. 19 is a top plan view showing the handlebar and the controls associated therewith.

FIG. 20 is a top plan view showing the parking brake control and its association with the parking brake which has been shown out of position to illustrate it in this figure.

FIG. 21 is a side elevational view showing the engine and its cooling system with other portions of the snowmobile removed or shown in phantom.

FIG. 22 is a top plan view of the same assemblage shown in FIG. 21.

FIG. 23 is a cross-sectional view taken through and showing the front radiator on a larger scale and taken along the line 23—23 of both FIGS. 22 and 24.

FIG. 24 is an enlarged top plan view of the front radiator.

FIG. 25 is a cross-sectional view taken along the line 25—25 of FIG. 21 and shows one of the side radiators.

FIG. 26 is a top plan view, in part similar to FIG. 22 and shows another embodiment of the invention.

FIG. 27 is a top plan view, in part similar to FIG. 22 but shows one type of prior art construction.

FIG. 28 is a top plan view, in part similar to FIG. 27 but shows another type of prior art construction.

#### DETAILED DESCRIPTION OF THE PREFERRED EMBODIMENTS OF THE INVENTION

##### The Overall Snowmobile

Referring now in detail initially to FIGS. 1 and 2, a snowmobile constructed in accordance with an embodiment of the invention is identified generally by the reference numeral 31. Although the invention relates to a cooling system for an engine, a snowmobile is depicted as a typical environment in which the invention may be practiced. This is a typical environment because the invention has particular utility with cooling systems that are designed to improve the heat exchange for engines in such applications and which are capable of fitting in a compact area.

The snowmobile 31 is comprised of a frame assembly, indicated generally by the reference numeral 32. This frame assembly will be described later in more detail by particular reference to FIGS. 3—9. However, the frame assembly 32 is comprised primarily of a fabricated rear frame subassembly 33, and a fabricated front frame subassembly, indicated generally by the reference numeral 34. The front frame assembly 34 includes a cast bulkhead 35 having a construction which will also be described later by reference to FIG. 3—9 and specifically to FIGS. 8 and 9.

A body 36 is mounted over the forward portion of the front frame assembly 34 and cooperates with the rear frame assembly 33 so as to form a rider's area to the rear of a controlling handlebar assembly 37. Directly to the rear of the handlebar assembly 37 there is positioned a fuel tank 38 and a rider's seat 39 is disposed to the rear of this fuel tank. The area to the rear of the rider's seat 39 is partially elevated at 41 so as to form a rear storage compartment 42 that is accessible through an openable closure 43.

The body assembly 36 further includes a cowl or windshield 44 disposed to the front of the handlebar 37 in protecting relationship to the rider or riders. A front bumper 45 is affixed to the front of the body 36 via the frame assembly 32 in a manner which will also be described.

A pair of front skis 46 are supported for suspension and dirigible movement at the front of the snowmobile 31 and specifically by the front frame assembly 34 in a manner which also will be described in more detail later. Basically, these skis 46 are supported within tubular members 47 by a suspension system which will be described and which tubular members 47 permit steering movement of the skis 46 under control of the handlebar assembly 37. As noted, this construction will be described in more detail later.

A drive belt 48 is supported at the rear of the snowmobile 31 beneath the seat 39 and specifically beneath an inverted U-shape portion of the rear frame subassembly 33. This drive belt 48 is supported at its lower surface by a pair of guide rails 49 that carry a plurality of idler rollers 51 and a main rear idler roller 52.

An idler roller 53 is mounted by the frame assembly and also cooperates to form the path for the drive belt 48. The

drive belt 48 is supported from the frame assembly 32 by a suitable suspension system which may be of any known type. This includes a front linkage 54 and associated cushioning unit (not shown). A rear linkage assembly 55 and additional cushion unit which is also not shown supports the rear end of the guide rails 49 and the drive belt 48.

Since the invention does not deal with the details of the suspension system for either the front skis 46 or the drive belt 48, where any details of these suspensions systems are not illustrated or described, any conventional structure may be utilized as should be readily apparent to those skilled in the art.

An internal combustion engine, indicated generally by the reference number 56 is mounted in the frame assembly 32 and specifically the front frame subassembly 34 in a manner which will be described. The engine 56 is of the three-cylinder in-line liquid cooled type and operates on a two-stroke crankcase compression principle. As has been previously noted, the invention has particular utility in conjunction with such engines, but is not limited to this specific type of engine.

The engine 56 drives the drive belt 48 in a manner which will be described. However, this drive assembly includes a continuously variable belt-type transmission, indicated generally by the reference numeral 57 which is placed on the left-hand side of the snowmobile 31 as viewed by a seated operator. This drive belt assembly 57 drives an intermediate shaft 58 which is journaled in the frame assembly 32 in a manner which also will be described. A final drive 59 that includes a reversing transmission drives the drive belt 48 through a drive belt shaft, to be described later along with the reversing transmission by particular reference to FIGS. 13-15.

#### The Frame Assembly

The construction of the frame assembly 32 will now be described by particular reference to FIGS. 3-9. As has been previously noted, the frame assembly 32 is made up of two primary frame subassemblies comprised of a rear frame subassembly 33 and a front frame subassembly 34.

The rear frame subassembly 33 is comprised of a pressing or stamping made from a sheet metal, such as steel, aluminum or aluminum alloy. It has a generally inverted U-shaped configuration that consists of a horizontally extending planar upper portion 61 upon which the seat 39 is supported. The upper portion has a pair of depending side portions 62, each of which has an outwardly extending portion 63 and 64 that form foot areas for accommodating the feet of a seated rider. These foot areas 63 and 64 are generally coextensive in length with the seat 39 and extend rearwardly beyond the rear portion of the seat 39 to lie along the outer sides of the storage compartment 42.

At its forward end, the rear frame subassembly 33 is formed with an outstanding flange portion 65 which is adapted to nest around the forward frame subassembly 34 and be affixed to it as by welding, riveting, or a combination thereof. By so forming the rear frame subassembly 33, the connection can be very robust and encompass a large surface area. In addition, since there are no bent flanges, the strength of the assembly is increased.

The front frame subassembly 34 is also constructed primarily from a sheet metal pressing, indicated generally by the reference numeral 66 and which has a U-shaped configuration that is comprised of a lower wall part 67 extends generally horizontally, although it has a pair of angularly related portions. A pair of upstanding side walls 68 and 69 are formed integrally with this lower wall 67.

The side wall 68 is formed with a generally oval-shaped opening 71 which aligned with the engine 56 and which facilitates passage therethrough a portion of the engine and drive train, as will become apparent.

The opposing side wall 69 is formed with a slotted opening 72 which extends through its upper peripheral edge and which is sized so as to facilitate insertion of the engine between the side members 68 and 69. The upper end of the opening 72 is closed by a closure plate 73 once the engine is in place. This closure plate 73 is detachably connected to the side wall 69, as by threaded fasteners or the like. By closing the opening 72, the side wall 69 is reinforced and, yet, the engine 56 can be easily installed and removed.

An intermediate reinforcing member, indicated generally by the reference numeral 74, extends between the side walls 68 and 69, and has flange portions that are affixed thereto as by welding, riveting, or a combination thereof. This reinforcing member 74 is comprised of a rear, horizontally extending portion 75 which is generally aligned with the rear frame upper wall portion 61. The portion 75 terminates at its forward end in a downwardly sloped part 76 which forms a cradle into which the engine 56 can be positioned and upon which it can be supported.

A sub frame cross-member 77 extends forwardly of the wall portion 76 and is connected thereto, as well as to the side walls 68 and 69, and the lower wall 67, as by welding, riveting, or the like.

Openings 78 are formed in the forward portions of the side walls 68 and 69, so as to provide lightening of the assembly and access to various components, as will be noted. This is done without reducing the overall strength of the assembly.

As has been previously noted, the forward end of the front frame subassembly 34 is closed by a bulkhead, indicated generally by the reference numeral 35. This bulkhead 35 has a configuration as best seen in FIGS. 8 and 9.

The bulkhead 35 is formed primarily as a casting from aluminum or aluminum alloy. The upper surface of the bulkhead 35 is provided with an arcuate recess 79 that is defined by a U-shaped wall portion thereof. The U shaped recess is provided to clear the exhaust system, as will be described later.

This U-shaped wall portion 79 is bounded by a pair of outer side walls 81 and 82, along which the forward sides of the side walls 68 and 69 nest. These forward portions of the side walls 68 and 69 can thus be affixed directly to the bulkhead 35 by riveting, welding, or a combination thereof. Alternatively, threaded fasteners may be utilized. In any of these events, the structure provides a very good reinforcing and, again, because the joint is formed by planar surfaces, there will be no local stress risers that could weaken the overall construction.

These bulkhead side walls 81 and 82 have curved surfaces and the rear face of the bulkhead 35 is provided with a plurality of reinforcing ribs 83 that run diagonally thereacross so as to add to the rigidity of the structure without significantly increasing its weight. Also, since the ribs 83 extend on the rear side of the bulkhead 35, they will not be subject to the accumulation of foreign material as if they had faced forwardly. The ribs 83 are formed on the protected side of the bulkhead 35 and, thus, will be able to kept fairly clean by their own internal construction. That is, the ribs 83, by being formed on the rear side of the bulkhead, will not be subject to collection of debris as if they were forwardly facing.

The sides of the bulkhead 35 are provided with a pair of embossments 84 that are adapted to receive threaded fas-

teners for affixing a bumper sub frame **85** thereto. This bumper sub frame **85** appears in most detail in FIGS. **2** and **3**, and permits the front bumper **45** to be attached directly thereto around an intervening lower portion **86** of the body **36**. Hence, the bumper **45** will be very robust and any forces exerted thereto will be transmitted directly to the frame assembly **32**.

#### The Front Suspension

The suspension arrangement for the front skis **46** and for the steering thereof will now be described by primary reference to FIGS. **2**, **4** and **7**. The front skis **46**, as has been noted, are supported for steering movement by means a pair of tubes **47**. These tubes **47** are supported for suspension travel by a pair of suspension arms **87** which have a jointed connection **88** to the tubular member **49** at their outer ends. The inner ends of these suspension arms **87** are pivotally supported on the bulkhead **35** by a pivotal support structure which is not shown, but which is affixed to the bulkhead **35** by means of bosses **89** (FIG. **8**) formed in the bulkhead assembly **35** and reinforced by the ribs **83**.

In addition to the suspension arms **87**, trailing arms **91** are affixed at their forward ends to the tubular members **47**. The rear ends of the trailing arms **91** are pivotally connected to the frame assembly and specifically to the rear portion of the front frame subassembly **34** in known manner.

The upper ends of the pins which support the skis **46** for steering movement in the tubular members **47** have connected to them steering arms **92**. These steering arms **92** are controlled by tie rods **93** that have hime joints **94** at their outer ends for pivotal connection to the steering arms **92**. The inner ends of the tie rods **93** are connected by further hime joints **95** to a bell crank assembly **96** of the steering mechanism, indicated generally by the reference numeral **97**. The steering bell crank **96** is pivotally supported on a pivot shaft **98** which is affixed to a boss **99** (FIGS. **6** and **8**) of the bulkhead **35** at the center of the recess **79**.

A drag link **101** is connected by a hime joint **102** to the bell crank **96** at its forward end. The rear end of the drag link **101** is connected by a further hime joint **103** to a pivot arm **104** that is affixed to the lower end of a steering shaft **105**. The lower end of the steering shaft **105** is journaled in a bearing assembly **106** that is mounted to the frame assembly **34** in a manner which will be described later. The upper end of the steering shaft **105** is journaled by a further bearing **107** that is mounted on an extension **108** of the frame assembly. The handlebar assembly **37** is affixed to the upper end of the steering shaft **105** in a known manner for steering of the front skis **46**.

It should be noted that the frame member **74** and specifically its inclined portion **76** is formed with an enlarged opening **109** through which the steering mechanism can be readily accessed.

#### The Engine and Exhaust System

A portion of the construction of the engine **56** will now be described by primary reference to FIGS. **1** and **2**. As has been noted, the engine **56** is, in the illustrated embodiment, of the three-cylinder in-line type and operates on a two-stroke crankcase compression principle. The engine **56** is also liquid cooled, as has been noted, and is comprised of a cylinder block **111** which extends generally transversely across the frame assembly **32** as has been previously described. This engine cylinder block **111** is supported by suitable engine mounts in the cradle formed by the front frame subassembly **34** and specifically by the frame mem-

bers **74** and **77**. The cylinder block **111** is formed with three transversely aligned cylinder bores that are closed by a cylinder head assembly **112** that is affixed to the upper end of the cylinder block **111** in any well-known manner.

An air box **113** is mounted in the rear portion of the front frame subassembly **34** and is covered by the body cover **36**. This air box **113** delivers air to charge formers **114** which may be comprised of carburetors that serve intake ports of the engine through short connecting manifolds.

The charge thus formed is delivered to the crankcase chambers of the engine for compression and transfer through scavange passages to the combustion chambers of the engine. This charge is then fired by spark plugs **115** that are mounted in the cylinder head assembly **112**. The spark plugs **115** are fired by a spark control box **116** that is conveniently mounted on the upper portion of the air box **113** so as to be cooled by the air flow therethrough.

The charge which is exhausted from the combustion chambers through exhaust ports formed in the front of the cylinder block **111** and delivered to an exhaust system, indicated generally by the reference numeral **117**.

The exhaust system **117** is shown in most detail in FIGS. **10-12** and will be described by reference thereto. This exhaust system includes an exhaust manifold assembly, indicated generally by the reference numeral **118**. This exhaust manifold assembly **118** is comprised of a pair of end runners **119** and **121** and a center runner **122**. Each runner **119**, **121**, and **122** has the same general construction. That is, the runners **119**, **121**, and **122** are formed by semi-cylindrical portions that have flanges that are welded together to form the tubular shape thereof as best seen in FIG. **11**.

The end runners **119** and **121** join with the center runner **122** close to the discharge end thereof. A collector pipe **123** is joined at the discharge end thereof. This collector pipe **123** has a flanged connection **124** to an expansion chamber device **125**. This joint **124** is held together by a spring-type clamp assembly **126**.

The expansion chamber device **125** generally curves around an area to clear the steering shaft **115** and is supported on the upper side of the bulkhead **35** within the recess **79**. The expansion chamber device **125**, in turn, has its discharge end connected by a further spring-held flange connection **127** to a muffler **128**. The muffler **128** is supported upon a boss portion **129** of the bulkhead **35** and held in place to the frame subassembly **34** by a spring clip. Exhaust gases are discharged to the atmosphere through a suitable exhaust pipe.

Obviously, the exhaust manifold **118** is quite compact and relatively short in length. This is done so as to provide a high degree of exhaust efficiency and good tuning for good high-speed performance. However, because of the fact that the end branch pipes **119** and **121** are connected to the center branch pipe **122** in close proximity and in close proximity to the engine exhaust ports, the engine may experience pulse-back effects that inhibit the charging efficiency and thus can provide dips in the power curve.

This falloff in engine performance at low speeds is avoided by providing a pair of expansion chambers, indicated by the reference numerals **131** and **132**, best shown in FIGS. **11** and **12** and which have a restricted communication with the branch pipes **119**, and **122** and **121**.

These expansion chambers **131** and **132** are easily formed by top plates **133** and bottom plates **134** that are affixed, as by welding, to the upper and lower tubular portions of the pipe branches **119**, **122**, and **121**. The volume of these

expansion chambers **131** and **132** is adjusted by providing a vertically extending closure plate **135** across the rearward end of each set of plates **133** and **134**.

Each of the end branch pipes **119** and **121** is provided with a respective relatively small communication opening **136** and **137** that is disposed in the angular area  $\theta_1$  formed by the juncture of the branch pipes **119** and **122** and **122** and **121**. In a like manner, the center branch pipe **122** is formed with a pair of openings **138** and **139** so that the openings **136**, **138**, **137**, and **139** are in this angular area  $\theta_1$ . This angular area  $\theta_1$  is greater than the angular area  $\theta_2$  formed where the branch pipes **119** and **121** are joined by the plates **135** so as to afford free access to this area of the exhaust gases.

By providing these small expansion chambers **131** and **132** it is possible to not only reduce the dip in the power curve that occurs at a low speed but also to improve the power throughout the entire engine speed range.

Finally, the cylinder block side of the branch pipes **119**, **121**, and **122** is reinforced by a flange plate **141** that is provided with apertures so that it can be affixed to the cylinder block **111** of the engine **56**.

#### The Transmission

The arrangement by which the engine **56** drives the drive belt **48** will now be described by reference to FIGS. **1**, **2**, **13** and **14**. As has been previously noted, this transmission includes the continuously variable transmission (CVT) indicated generally by the reference numeral **57**. This continuously variable transmission **57** includes a driving pulley **142** which is driven from the engine crankshaft **143** via a centrifugal clutch. The variable driving pulley **142** drives a drive belt **143** which, in turn, drives a driven variable pulley **144**.

The driven pulley **144** is associated with the intermediate shaft **58**. This intermediate shaft **58** extends transversely across the width of the snowmobile frame **32** and terminates at an end that is journaled in an anti-friction bearing **145**. The bearing **145** is supported within a transmission casing, indicated generally by the reference numeral **146** that comprises a first member **147** that is affixed to the frame side wall **69**. This defines a cavity into which the shaft **58** extends. This cavity is closed by a cover plate **148** that is affixed to the plate **147** with a seal **149** formed therebetween.

The end of the intermediate drive shaft **58** that extends into the transmission case **146** has affixed to it a driving sprocket **151**. The driving sprocket **151** has a key connection to the intermediate shaft **58** and is held thereon by a retaining nut **152**.

This sprocket **151** drives a drive chain **153** which, as best seen in FIG. **13**, is engaged with a reverse drive sprocket **154** and a forward drive sprocket **155**. Both the reverse drive sprocket **154** and the forward drive sprocket **155** rotate in the same direction. However, they are coupled in a different manner to a belt driving shaft **156** which forms the output shaft of the final drive reversing transmission, which transmission is indicated as noted generally by the reference numeral **59** and which includes a reversing drive, as will be described.

Lubricant may be received in the transmission case **146** for lubricating the driving components. The lubricant level may be checked by a dip stick **160**.

The reverse drive sprocket **154** is journaled on a stub shaft **157** which is mounted in the casing between the members **147** and **148**. The forward driving sprocket **155** is rotatably journaled by means of a needle-bearing assembly **158** on the

belt driving shaft **156**. In this regard, it should be noted that the belt driving shaft **156** extends through the forward end of the drive belt **48** and has one or more lugs on it which are engaged with corresponding lugs of the drive belt **48** to drive it in a manner well known in this art.

The belt-driving shaft **156** is journaled at one end by a bearing **159** that is fixed to the transmission case **147**. The other end of the belt driving shaft **156** may be journaled in a similar bearing carried at the opposite side of the frame assembly **32** and which is not shown.

The reverse drive gear **154** is coupled for rotation with a further reverse drive gear **161**, as by drive pins **162**. The second reverse drive gear **161** is also journaled on the stub shaft **157** by needle bearings, indicated by the reference numeral **163**.

A combined gear and dog clutch member, indicated generally by the reference numeral **164** is splined for rotation with the belt drive shaft **156** outwardly of the forward driving sprocket **155**. Actually, the reverse gear and dog clutching member **164** is splined on a tubular stub shaft **165** which in turn has a splined connection to the belt drive shaft **156** inwardly of the needle bearing **158** and which is held axially in place by a retainer element **166** and nut **167**.

In the forward drive mode, as shown in the solid line view of FIG. **14**, dog clutching elements **168** are engaged with the forward drive sprocket **155** so as to establish a driving relationship between this sprocket, the reverse drive gear and dog clutching member **164** and the belt driving shaft.

When the reverse driving gear and dog clutching member **164** is shifted to the right as shown in FIG. **14** to the phantom line position, the teeth **169** of the gear **164** will be brought into meshing relationship with the teeth of the second reverse drive gear **161**. At this time, the gear **164**, stub shaft **165**, and belt driving shaft **156** will be driven in an opposite direction or the reverse drive direction. Hence, a very compact but highly effective forward reverse transmission is provided by this mechanism.

#### The Transmission Control

The shifting mechanism by which this transmission reversal is obtained will now be

described by primary reference to FIGS. **13–15**, and **17**. The shifting of the transmission **59** between its forward drive mode and its reverse drive mode is controlled by an operator control shift lever, indicated generally by the reference numeral **171** and which is mounted on the right-hand side of the vehicle in close proximity to the handlebar **37**.

This shifting mechanism includes a shift rod **172** that carries a shift knob **173** at one end thereof. The shift rod **172** is connected at its opposite end, as by welding, to a shift bracket **174**. The shift bracket **174** is pivotally connected about a pivot pin **175** to a shift lever **176**. The pivotal movement of the bracket **174** about the shift lever **176** is utilized to provide a release for a locking mechanism which locks the shift lever assembly **171** in either its forward and reverse drive positions. In addition, this pivotal movement is also utilized to actuate a brake, as will be described, so as to retard the rotation of the intermediate shaft **58** so as to facilitate smooth shifting. This braking action occurs temporarily during the movement between the forward drive position and the reverse drive position as shown in FIG. **13** and which motion will be described in more detail later after the total mechanism is described.

The shift lever **176** is disconnectedly connected to a further bracket mechanism **177** which is pivotally supported

on a mounting bracket **178** by means of a further pivot pin **179**. The bracket **178** is conveniently affixed to an appropriate portion of the frame assembly. A tension spring **181** is interlocked between the shift bracket **174** and the plate **177** and normally biases the mechanism to the position wherein the shift rod **172** is pivoted to an upward location as shown in the solid line FWD position in FIG. **13**. This maintains a latch mechanism, indicated generally by the reference numeral **182** in position. This latch mechanism **182** will now be described by primary reference to FIG. **15**.

As seen in FIG. **15**, the fixed mounting bracket **178** is formed with a first, forward locking notch **183** and a second, reverse locking notch **184**. A sliding latch pin **185** has a pivotal connection, at **186** to the shift bracket **174** adjacent the tension spring **181** and at a location spaced from the pivot pin **175**. This latch pin **185** will be reciprocated upwardly or downwardly upon pivotal movement of the shifting bracket **174** around the pivot pin **175**.

A headed fastener **187** extends through a key hole slot **188** formed in the lower portion of the latching pin **185** so as to retain it axially in position but to permit this reciprocal motion.

A pin **189** is carried by the mounting bracket **178** and extends into an arcuate slot **191** formed in the plate **177**. The arc of the slot **191** is around a radius that is coincident with the axis defined by the pivot pin **179**. The length of the slot **191** limits the degree of pivotal movement of the lever **176** about the pivot pin **179**.

In order to ensure smooth shifting, the lever shaft **176** and plate **177** have a disconnectable detent connection between them. To this end, the plate **177** is formed with a portion that carries a spring biased plunger **192**. This plunger **192** can be received in a detent recess **193** formed in the plate **177** so as to permit some movement of the shift lever **176** without accompanying movement of the plate **177**. This is done so as to permit some movement until the dog clutching elements **168** engage with the forward drive gear **155**.

Continuing to refer to the shift mechanism and now referring primarily to FIG. **13**, it will be seen that a first shift link **194** is pivotally connected at one end to the shift plate **177**. The opposite end of the shift link **194** is pivotally connected to a bell crank **195** that is journaled for pivotal movement on the transmission case **146**. A further shift link **196** is pivotally connected at one end to the bell crank **195** and at the other end to a shift yoke **197** which also appears in FIG. **17**. This shift yoke **197** is coupled to a shift shaft **198** which is journaled in the transmission housing piece **148** and which carries a shift fork **199**. The shift fork **199**, in turn, has its end portions received in a shift collar **201** that is formed integrally with the reverse gear and dog clutching member **164**. Hence, pivotal movement of the shift fork **199** moves the reverse gear and dog clutching member **164** between the forward drive position shown in solid lines in FIG. **14** and the reverse drive position shown in phantom lines in this figure.

This shifting operation is achieved by the motions which will now be described by primary reference to FIGS. **13-15** and primarily FIGS. **13** and **15**. Considering the transmission to be in the forward drive position as shown in solid lines in the figures, the operator first depresses the shift knob **173** so as to pivot the shift rod **172** and shift bracket **174** about the pivotal connection **175** to the shift lever **176**. This will cause the shift locking pin **185** to be moved from the solid line position shown at the left-hand side of FIG. **15** axially outward of the forward locking slot **183**. During this time, the tension spring **181** will be loaded.

Having thus released the lock, the operator can then pivot the shift lever **176** and shift plate **177** in a rearward direction which would be counter-clockwise in FIG. **13** and clockwise in FIG. **15**. During this shifting motion, the detents **192** and **193** may be released if there is great resistance to shifting. In any event, once the shift is completed, then the locking pin **185** will register with the reverse lock slot **184** of the bracket **178**. When the operator then releases the pressure on the shift knob **173**, the locking pin **185** will be urged by the spring **181** into the reverse locking slot **184**. This position is shown in phantom lines in FIG. **15**.

#### The Shift Assist Brake

As has been noted, the transmission control mechanism **171** also incorporates an arrangement for braking the rotation of the intermediate driving shaft **58** at the times when the transmission is shifted between its forward drive position and its reverse drive position. That braking mechanism will now be described by particular reference to FIGS. **13, 14,** and **16**.

As has been noted, the snowmobile **31** is provided with a main service braking system which service braking system operates on the intermediate driving shaft **58**. This main braking system includes a brake disc or rotor **202** which is affixed for rotation by a keyed connection **203** with the intermediate driving shaft **58**. A service or main braking system, indicated generally by the reference numeral **203** is associated with this brake disc **202** for braking the operation of the snowmobile **31** during normal operation. This main braking system will be described later.

In addition to the main service brake **203**, an auxiliary and parking brake caliper assembly, indicated generally by the reference numeral **204** also cooperates with the brake disc **202** for braking its rotation and that of the intermediate drive shaft **58**. This caliper **204** includes a pair of scissors like caliper members **205** and **206** that are pivotally connected to each other by a pivot pin **207**. The pivot pin **207** is, in turn, fixed to the mounting bracket **178** so as to be held against rotation relative to the frame assembly **32**.

The caliper leg **205** supports a first brake pad **208** that is disposed on one side of the brake disc **202**. The caliper leg **206** supports a second brake pad **209** that is disposed on the opposite side of the brake disc **202** in confronting relationship to the brake pad **208**. A torsional spring **211** encircles the pivot pin **207** and urges the brake caliper members **205** and **206** to a released position as shown in FIG. **16**.

In order to actuate the caliper assembly **204** to its brake position, a wire actuator assembly, indicated generally by the reference numeral **212** is provided and which cooperates with an extension **210** of the shift actuating bracket **174** so as to actuate the brake caliper **204** when the lever **174** is pivoted about the pivot pin **175** simultaneously with the release of the shift latch mechanism **182**.

To this end, a wire actuator **213** is affixed, as at **214** to the extension **210** of the shift actuating lever **174** at one end of the wire actuator **213**. The other end of the wire actuator **213** is connected by a ferrule **215** to the caliper member **205**.

A protective sheath **216** of the wire actuator **212** has one end portion **217** affixed to the lever **176** of the shift actuator. The other end of the sheath **216** is affixed, as at **217**, to the remaining caliper member **206**.

As a result of these connections of the wire actuator **212**, when the shift rod **172** and shift lever **174** are pivoted about the pivot pin **175**, the wire actuator **213** will be pulled through the sheath **216**, and the sheath **216** will be forced in the opposite direction. This causes the caliper members **205**

and 206 to pivot relative to each other in opposite directions about the pivot pin 207 to compress the torsional spring 211. This action brings the brake pads 208 and 209 into braking relationship with the brake disc 202. Hence, before the shift is actually effected, the brake assembly 204 will be energized, and the rotation of the transmission elements will be braked.

The shift is then executed in the manner aforementioned. After the shift has been completed, the release of the shift rod 172 and shift lever 174 will cause the spring 211 along with the operation of the tension spring 181 to return the mechanism to its position, and the brake will be released as the shift is completed. It should be readily apparent to those skilled in the art that the brake actuation occurs during the shifting process from forward to reverse, or from reverse to forward.

#### The Main Throttle and Brake Controls

The throttle control and main braking control for the snowmobile 31 will now be described by reference to FIGS. 2 and 19, for the actuator mechanisms, and to FIG. 14, for the service brake actuating mechanism. Referring first to FIG. 19, the handlebar assembly 37 is shown in more detail. This includes a main handlebar 218 that has hand grips 219 and 221 at its opposite ends. Associated with the right-hand hand grip 221 is a throttle control lever 222.

This throttle control lever 222 is pivotally supported on the end of the handlebar 218 adjacent the hand grip 221 by a pivot pin 223. A wire actuator 224 is associated with the throttle lever 222 at one end and with the throttle valves of the carburetors 114 at the opposite end so as to permit the operator to open and close the throttle valves and control the speed of the engine. A suitable return spring is employed so that when the throttle lever 222 is released, the throttle valves will be returned to their idle position.

Adjacent the handlebar assembly 219 is the service brake control mechanism, indicated generally by the reference numeral 225. This service brake control mechanism includes a mounting bracket 226 that carries a master cylinder 227. A service brake actuating lever 228 is mounted for pivotal movement on the bracket 226 by a pivot pin 229. Pivotal movement of the service brake lever 228 will pressurize the master cylinder 227 and direct hydraulic fluid under pressure through a brake line 231.

Referring now to FIG. 14, the opposite end of the brake line 231 is connected to a caliper assembly 232 of the service brake 203. The connection provides hydraulic fluid to a pair of fluid chambers 233 and 234 formed on the opposite legs of the caliper assembly 232. Hydraulic pistons in these chambers 233 and 234 act upon brake pads 235 and 236, respectively, which are slidably supported on pins 237 that span the legs of the caliper assembly 232. When these brake pads 235 and 236 are actuated, they will be forced in opposite directions into engagement with the brake disc 202 to brake its rotation.

The caliper assembly 232 is fixed relative to the vehicle frame by fasteners 238 which bolt the caliper assembly 232 to the transmission housing 146 and, accordingly, to the snowmobile frame 32.

As may be best seen in FIGS. 14 and 18, the area adjacent the transmission case 146 is formed with a ledge 239 that supports a battery carrier 241. A storage battery 242 is retained in the battery carrier 241 by a strap 243 that is connected at its opposite ends to the frame assembly so as to fix the battery 242 in place. The strap 243 cooperates with a retainer 244 formed on the battery case 241.

#### The Parking Brake

The snowmobile 31 is also provided, in addition to the service brake 203 and the transmission shift assist brake, a

parking brake assembly. This parking brake assembly is actuated by a parking brake control lever mechanism, indicated generally by the reference numeral 245, as seen in FIGS. 19 and 20, so as to operate the mechanical caliper-type brake 204 by effecting counter-pivotal movement of the caliper members 205 and 206. This mechanism will now be described by reference to those figures (19 and 20).

The parking brake mechanism includes a mounting bracket assembly 246 that is affixed appropriately to the handlebar member 218 adjacent the hand grip 219 and in proximity to the service brake actuating mechanism 225. However, this parking brake actuating mechanism 245 is configured so as to avoid inadvertent operation of the parking brake 245 and to afford a warning to the operator when the parking brake lever 245 is in its braking position, as will become apparent.

The parking brake mechanism actuating lever 245 includes a lever 247 which is pivotally mounted on the bracket 246 by a pivot pin 248. It should be noted that the pivot axis defined by the pivot pin 248 extends transversely to the pivot axis of the service brake actuating lever 228 defined by the pivot pin 229. In addition, the brake actuating levers are on opposite sides of the handlebar assembly 37.

A wire actuator, indicated generally by the reference numeral 249, has a wire portion 251 which is connected by a ferrule and pivot pin 252 to the parking brake lever 247. The pivot pin 252 is disposed at an offset location to the pivot pin 248 for the lever 247 and provides an over-center relationship, as will be described.

A wire sheath 252 encircles the wire portion 251 and is fixed at one end to the mounting bracket 246. The other end of the wire sheath 252 is affixed to the caliper member 206 by a fastener assembly 253. It should be noted that this connection for the wire actuator 249 is located radially outwardly from the pivot pin 207 of the caliper assembly 204 from the connection of the wire actuator 212. This provides a greater mechanical advantage. It is important that the parking brake mechanism exert more force on the caliper 204 than the transmission braking mechanism, for obvious reasons.

The opposite end of the wire actuator 251 is connected by means of a ferrule 254 to the remaining caliper member 205.

The parking brake actuating lever 247 is provided with a folded-over end portion 255 that extends transversely to its main portion and which thus provides a part that will be easy for the operator to access, even though he is wearing heavy gloves. This off-turned portion 255 is, however, configured so as to provide a neat appearance and to avoid unnecessary protrusion.

As seen in FIG. 20, when the parking brake lever 247 is in its released position, as shown in solid lines, the pivot pin 252 will be disposed on one side of the pivot axis 248 of the lever 247. Hence, there will be an over-center relationship established that will tend to retain the parking brake lever 245 in this position.

When the operator wishes to engage the parking brake, the lever 247 is rotated, as shown by the arrow in FIG. 20, to the phantom line or engaged position. When this occurs, a tensile force will be placed on the wire actuator 251 so as to pivot the caliper member 205 in a counter-clockwise direction, as seen in FIG. 20. At the same time, a force will be exerted through the wire sheath 252 on the caliper member 206 to cause it to rotate in the clockwise direction. Hence, the brake pads 208 and 209 will be forced into engagement with the disk 202 to brake its rotation.

In this position, the pivot pin 252 moves to the other side of the supporting pivot pin 248 for the parking brake lever

247. In this condition, a further over-center relationship is established that will retain the parking brake in its engaged position.

Also, it should be noted that in this position, the parking brake lever 247 will be readily visible to the operator. In addition, if he attempts to put his hand on the handle grip 219, he will notice the presence of the parking brake lever 247 in its engaged position. Thus, the likelihood of inadvertent attempts to operate the snowmobile 31 with the parking brake assembly engaged will be avoided.

Finally, in connection with the handlebar and control assembly, it should be noted that the central portion of the handlebar 218 is covered by a protective covering 256. This protective covering covers the center portion of the handlebar assembly 218 between the throttle control mechanism 222 and the brake controlling mechanisms 225 and 245. Thus, a neat appearance is provided. Again, however, the off-turned portion 255 of the parking brake lever 247 will permit a rider with gloves to move the parking brake 247 between its release to its engaged positions, even when wearing thick gloves.

#### The Engine Cooling System

As has been noted, the engine 56 is of the water-cooled type. Cooling liquid, such as an anti-freeze type coolant, is provided in the cooling jacket of the engine 56. This coolant is circulated through a heat exchanging system which embodies the invention, shown in FIGS. 21-25, for exchanging heat between the engine and the atmosphere to keep the engine 56 at its desired operating temperature. This cooling system includes a number of heat exchangers which are interrelated with the frame assembly 32, and more particularly, the rear frame subassembly 33 and front frame subassembly 34 so as to provide not only adequate cooling, but also to add to the rigidity of the frame structure. This permits a lightening in weight of the frame without any structural sacrifices.

This heat exchanger system includes a front heat exchanger, indicated generally by the reference numeral 257, a pair of side heat exchangers, indicated generally by the reference numerals 258 and 259, and a rear heat exchanger, indicated generally by the reference numeral 261. As may be seen by reference to FIGS. 21 and 22, the heat exchangers 257, 258, 259 and 261 are disposed in proximity to, but surrounding relationship with, the drive belt 48.

In addition, the front and rear heat exchangers 257 and 261 span the frame assembly from side-to-side, and thus provide reinforcing as will be described. In a like manner, the side heat exchangers 258 and 259 underlie and are, in effect, integrally connected to the footstep portions 63 and 64 of the rear frame subassembly 33, so as to further rigidify this construction. The construction of the individual heat exchangers will be described first, and then their relationship to the frame assembly and the overall cooling system will be described.

Referring first primarily to FIGS. 23 and 24, the front heat exchanger 257 will be described. This heat exchanger 257 includes a main body portion 262 which is formed as an extrusion from a lightweight material having a high coefficient of conductivity, such as aluminum or an aluminum alloy. This extrusion 262 is formed with a lower flange portion 263 and an upper flange portion 264. These flange portions 263 and 264 are formed with a plurality of openings that pass threaded fasteners or rivets so that the heat exchanger 257 can be rigidly affixed in the frame assembly,

and particularly extending across an opening formed in the front frame subassembly 34 below the inclined wall 76, as seen in FIG. 7. Thus the heat exchanger 257 extends transversely across and also to provide reinforcing for this area of the frame assembly. Other relationships between the heat exchanger 257 and the other components of the snowmobile will be described later.

The interior portion of the extrusion 262 is divided by a plurality of internal walls 265, 266 and 267 into parallel extending flow chambers 268, 269 and 271. Cooling fins 272 extend rearwardly from these chambers into the frame assembly in an area where they will experience air flow, and thus afford cooling for the coolant circulated therethrough.

The ends of these chambers 268, 269 and 271 are closed by end plates 273 and 274 so as to provide a water-tight closure for these flow paths. These end plates 273 and 274 are also formed with openings so as to permit attachment to the sides 68 and 69 of the front frame subassembly 34 so as to further rigidify this structure.

An L-shaped water coolant inlet pipe 275 is formed at one side of the extrusion 262 in communication with the left-hand side of the lower water channel 268. The wall 265 extends uninterruptedly from the end plate 273 and terminates at an end portion 276 (FIG. 24) that is spaced from the end plate 274. Hence, the coolant which is flowing from left to right through the channel 268 may then flow upwardly into the channel 269. This coolant then can flow transversely back across the extrusion 262 toward the end plate 273.

The wall 266 terminates at an end portion 277 that terminates short of the end plate 273 so that coolant that has passed along the channel 269 may then flow upwardly into the channel 271. The coolant then reverses its flow and flows back to an outlet tube 279 that is affixed to the front side of the extrusion 262 and which delivers the coolant, in a manner to be described, to the engine water pump.

As may be best seen in FIGS. 7, 23 and 24, the forward portion of the front heat exchanger 257 extends through an opening in the frame member 76. The front of the extrusion 262 is provided with an upper flange 281 and a lower flange 282. The flanges 281 and 282 are integrally connected to the extrusion 262 and define a cavity for holding a steering shaft support assembly, indicated generally by the reference numeral 283.

This support assembly 283 is comprised of a casting or forging 284 which is formed from an aluminum or aluminum alloy. This member 284 is received within the area bounded by the flanges 281 and 282 and is rigidly affixed thereto as by weld beads 285 and 286. This thus adds rigidity to the heat exchanger 262 and the frame assembly.

A pair of threaded fasteners 287 are carried by this member 284 and afford attachment for the bearing assembly 106 which forms the aforementioned journal for the lower end of the steering shaft 105. Thus, this assembly for the front heat exchanger 257 provides not only adequate and efficient cooling for the engine 56, but also adds to the rigidity of the frame assembly and permits it to function to journal the lower end of the steering shaft 105.

The construction of the side heat exchangers 258 and 259 will now be described by primary reference to FIG. 25, although this structure also is shown in the other figures showing the cooling system. The heat exchangers 258 and 259 are actually identical in construction, but one is reversed relative to the other. The reason for this will be described.

Each heat exchanger is comprised of a generally L-shaped assembly having a vertically extending leg 289 and a horizontally extending leg 291. These legs are apertured so

as to permit connection by rivets **292**, or the like, to a vertically extending walls **62** that connect the frame portion **61** with the frame portions **63** and **64**. The leg **291** is affixed to the underside of the footrest portions **63** and **64**, and thus, the heat exchangers **258** and **259** further rigidify the frame assembly **32**, particularly in this critical area.

The lower leg **291** is hollow and is divided by wall portions **294** and **295** into three flow channels **296**, **297** and **298**. The ends of these flow channels are closed by a suitable closure plate. Like the walls **265**, **266** and **267** of the front heat exchanger **257**, the walls **294** and **295** terminate short of one end so as to provide a serpentine flow path for the coolant through the heat exchangers **258** and **259**.

Continuing to refer primarily to the heat exchanger **259**, one end of it is provided with a coolant inlet fitting **299**. The inlet fitting **299** of the heat exchanger **259** is at the front of the snowmobile, while the corresponding inlet fitting **299** of the heat exchanger **258** is at the rear end. These fittings **299** communicate at one end of the flow channel **298**.

The wall **295** that defines this flow channel terminates short of the end portion so as to provide a crossover passage **301** so that coolant that has entered one end of the channel **298** can flow transversely across to the other end of the channel **297**.

The coolant then flows along the channel **297** to a point where the wall **294** terminates short of the inlet end of the channel **298**. This permits the coolant to then cross over to the remaining flow channel **296** and flow back toward the opposite end. A coolant discharge fitting **302** is formed therein that permits discharge of the coolant from the respective side heat exchanger **258** or **259**. The discharge fitting **302** of the heat exchanger **259** is to the rear, while the outlet **302** of the heat exchanger **258** is to the front.

The rear heat exchanger **261** is shown only in FIGS. **21** and **22**. This heat exchanger **261**, like the heat exchangers **257**, **258** and **259**, is formed of a main body portion **303** that may be formed from an aluminum extrusion and which has internal baffles so as to define a serpentine three pass flow path. This flow path begins at an inlet fitting **304** formed at the side adjacent the side heat exchanger **259**. From the inlet fitting **304**, the coolant flows transversely across toward the opposite side of the snowmobile.

The coolant flow then reverses direction and flows back toward the inlet side, as with the previously described heat exchangers. Finally, the flow path passes back in the same directly as the inlet, and exits through a discharge fitting **305** associated with the lefthand side of the snowmobile and adjacent the side heat exchanger **258**.

These flow paths are closed by end plates **306** that are affixed to opposite ends of the extrusion **303** and which afford a means for attachment to the side walls **293** of the frame subassembly **33**. As a result, this closure rigidifies the rear end of this subassembly **33**, and the heat exchanger **261**, in fact, forms a portion of this frame subassembly.

The heat exchanger **261** is to the rear of the drive belt **48**, even in the fully compressed state thereof, as shown in FIG. **21**, so as to afford adequate clearance and protection. Cooling fins (not shown) may be provided on both the front and rear portions of the rear heat exchanger **261**.

Referring to FIG. **1**, it should be seen that the snowmobile **31** is provided with a rear bumper assembly **307** which is juxtaposed to the rear heat exchanger **261** and which will protect it. A flap **308** depends from the body in this area to further control the air flow and snow which may be thrown rearwardly by the drive belt **48**.

The coolant path through the entire system will now be described by reference to FIGS. **21** and **22**. The engine **56** is

provided with a crankcase assembly **309** upon which a water pump **311** is mounted, and which is driven from the engine in a suitable manner. A short flexible hose **312** delivers water from the front heat exchanger outlet **279** to this water pump **311**. The water is then circulated through the engine, and is discharged from a housing assembly **313**, which may include a thermostat, to another short delivery hose **314**. A fitting **315** is provided in this hose **314**. This fitting **315** has a fill neck that is closed by a cap **316** so that coolant can be added to the system.

Another short hose **317** extends from the fitting **315** to the inlet fitting **299** of the side heat exchanger **259**. After the coolant has passed through the three passes of the side heat exchanger **259**, it is discharged from the discharge fitting **302** to a short connecting hose **318** into the rear heat exchanger inlet fitting **304**.

The coolant then flows through the three passes of the rear heat exchanger **261** and is discharged therefrom through its outlet fitting **305**. A short flexible conduit **319** connects the rear heat exchanger outlet fitting **305** with the inlet fitting **299** of the remaining side heat exchanger **258**. The coolant can then flow through the three passes of this heat exchanger and be discharged from its outlet fitting **302**.

The outlet fitting **302** of the side heat exchanger **258** is connected by a short flexible connecting pipe **321** to the inlet fitting **275** of the front heat exchanger **257**.

Thus, it should be readily apparent that the cooling system is configured so as to provide a very large surface area for heat exchange and also a long flow path for the coolant. The heat exchangers, as already noted, also rigidify the frame assembly and perform certain additional structural functions, as in the case of the front heat exchanger **257**. All of this is accomplished with very short connecting hoses, and hence, the likelihood of leakage or hose damage is substantially reduced.

An expansion tank **322** is mounted forwardly of the fuel tank **38** for overflow purposes. This expansion tank **323** receives overflow coolant through a conduit **322** that interconnects with the fitting **315** in the area of the cap **316**. A fill neck closed by a cap **324** is also provided on the upper end of the expansion tank **322**.

In this embodiment as thus far described, the side heat exchangers **258** and **259** have been formed from aluminum extrusions, with internal walls that define their three pass flow paths. Of course, other types of heat exchangers may be employed. FIG. **26** shows another embodiment which is basically the same as the embodiment thus far described. This embodiment, however, shows how the invention can be utilized with a two-cylinder engine, and the side heat exchangers, indicated by the reference numerals **501** and **502**, are provided with internal flow paths that are defined by finned and suitable apertured baffle plates **503**, to define the flow paths through their internal flow channels **504**. In all other regards, this embodiment is the same as those previously described and, for that reason, further description of this embodiment is not believed to be necessary to permit those skilled in the art to practice this invention.

Thus, from the foregoing description it should be readily apparent that the described embodiments of the invention provide a heat exchanger system for a snowmobile engine that affords a high surface area. At the same time, the disposition of the heat exchangers is such that the number of external connecting conduits is substantially reduced as is the length of such conduits. Furthermore, the heat exchangers are associated with the frame assembly so as to provide substantial reinforcing for it without adding significantly to the overall weight of the snowmobile.

Of course, the foregoing description is that of preferred embodiments of the invention, and various changes and modifications may be made without departing from the spirit and scope of the invention, as defined by the appended claims.

What is claimed is:

1. A snowmobile comprised of a frame assembly, a liquid cooled internal combustion engine supported at the front of said frame assembly, a drive belt disposed beneath said frame assembly to the rear of said engine and supported for suspension movement relative to said frame assembly, a seat mounted on said frame assembly above said drive belt, a pair of foot areas formed by said frame assembly on opposite sides of said seat, a front heat exchanger extending transversely across said frame assembly at the front of said drive belt, a pair of side heat exchangers each extending along a lower horizontal surface of a respective one of said foot areas, a rear heat exchanger extending transversely across said frame assembly at the rear of said drive belt, and means for circulating liquid coolant through a cooling jacket of said engine and through said heat exchangers, said side heat exchangers being integrally connected around the outer periphery of said side heat exchangers to said frame assembly for reinforcing said frame assembly, at least one of said front and said rear heat exchangers being integrally connected around the outer periphery of said at least one heat exchanger to said frame assembly for reinforcing said frame assembly.

2. A snowmobile as set forth in claim 1, wherein both the front and rear heat exchangers are integrally connected to the frame assembly for reinforcing the frame assembly.

3. A snowmobile as set forth in claim 1, where the frame assembly is comprised of a pair of spaced apart side plates and at least one of the front and rear heat exchangers span the side plates.

4. A snowmobile as set forth in claim 3, wherein both the front and rear heat exchangers span the side plates and are integrally connected thereto.

5. A snowmobile as set forth in claim 4, wherein the front heat exchanger is disposed immediately forwardly of the forward end of the drive belt and the rear heat exchanger is disposed immediately to the rear of the drive belt.

6. A snowmobile as set forth in claim 5, wherein at least a portion of the flight of the drive belt extends in the area disposed vertically between the front and rear heat exchangers.

7. A snowmobile as set forth in claim 1, wherein the side heat exchangers have a heat exchanging portion that extends horizontally beneath the respective foot area and is rigidly connected thereto and an upstanding side portion that is rigidly connected to an upstanding side portion of the frame assembly that supports the respective foot area.

8. A snowmobile as set forth in claim 1, wherein the coolant is circulated from the engine in a path that flows along the length of one of the side heat exchangers, transversely from one end of said one side heat exchanger to the corresponding end of the other side heat exchanger, longitudinally along the other side heat exchanger, and transversely across the front heat exchanger from the other end of the other side heat exchanger.

9. A snowmobile as set forth in claim 8, wherein the coolant flows through the side heat exchangers in at least three reversing flow paths in opposite longitudinal directions therealong so that the coolant enters one end of each of the side heat exchangers and exits the other end of each of the side heat exchangers.

10. A snowmobile as set forth in claim 8, wherein the rear heat exchanger provides at least three passes with the

coolant flowing transversely thereacross from one side to the other, from the other side back to the one side and from the one side back to the other side so that coolant enters the rear heat exchanger at one side thereof and exits the rear heat exchanger at the other side thereof.

11. A snowmobile as set forth in claim 8, wherein the front heat exchanger provides at least three passes with the coolant flowing transversely thereacross from one side to the other, from the other side back to the one side and from the one side back to the other side so that coolant enters the front heat exchanger at one side thereof and exits the front heat exchanger at the other side thereof.

12. A snowmobile as set forth in claim 11, wherein the coolant flows through the side heat exchangers in at least three reversing flow paths in opposite longitudinal directions therealong so that the coolant enters one end of each of the side heat exchangers and exits the other end of each of the side heat exchangers.

13. An internal combustion engine as set forth in claim 12, wherein the rear heat exchanger provides at least three passes with the coolant flowing transversely thereacross from one side to the other, from the other side back to the one side and from the one side back to the other side so that coolant enters the rear heat exchanger at one side thereof and exits the rear heat exchanger at the other side thereof.

14. An internal combustion engine as set forth in claim 8, wherein the frame assembly is comprised of a pair of spaced apart side plates and the one of front and rear heat exchangers spans the side plates.

15. An internal combustion engine as set forth in claim 14, wherein both the front and rear heat exchangers span the side plates and are integrally connected thereto.

16. An internal combustion engine as set forth in claim 15, wherein the coolant flows through the side heat exchangers in at least three reversing flow paths in opposite longitudinal directions therealong so that the coolant enters one end of each of the side heat exchangers and exits the other end of each of the side heat exchangers.

17. An internal combustion engine as set forth in claim 15, wherein the rear heat exchanger provides at least three passes with the coolant flowing transversely thereacross from one side to the other, from the other side back to the one side and from the one side back to the other side so that coolant enters the rear heat exchanger at one side thereof and exits the rear heat exchanger at the other side thereof.

18. An internal combustion engine as set forth in claim 15, wherein the front heat exchanger provides at least three passes with the coolant flowing transversely thereacross from one side to the other, from the other side back to the one side and from the one side back to the other side so that coolant enters the front heat exchanger at one side thereof and exits the front heat exchanger at the other side thereof.

19. An internal combustion engine as set forth in claim 18, wherein the coolant flows through the side heat exchangers in at least three reversing flow paths in opposite longitudinal directions therealong so that the coolant enters one end of each of the side heat exchangers and exits the other end of each of the side heat exchangers.

20. An internal combustion engine as set forth in claim 19, wherein the rear heat exchanger provides at least three passes with the coolant flowing transversely thereacross from one side to the other, from the other side back to the one side and from the one side back to the other side so that coolant enters the rear heat exchanger at one side thereof and exits the rear heat exchanger at the other side thereof.