



US009326567B2

(12) **United States Patent**
Brault

(10) **Patent No.:** **US 9,326,567 B2**
(45) **Date of Patent:** **May 3, 2016**

(54) **MULTI-ADAPTABLE POWER AUTOMATED TRACTION APPARATUS**

USPC 280/604, 605, 606, 607, 809, 28.11;
188/5, 8, 32; 36/59.2, 61, 62, 132, 134,
36/135, 59 R

(71) Applicant: **Jean Brault**, Cowansville (CA)

See application file for complete search history.

(72) Inventor: **Jean Brault**, Cowansville (CA)

(56) **References Cited**

(*) Notice: Subject to any disclaimer, the term of this patent is extended or adjusted under 35 U.S.C. 154(b) by 0 days.

U.S. PATENT DOCUMENTS

(21) Appl. No.: **14/120,857**

2,107,363 A * 2/1938 Binder A63C 7/08
134/67
4,911,461 A * 3/1990 Humphrey A63C 11/00
188/5

(22) Filed: **Jul. 7, 2014**

(Continued)

(65) **Prior Publication Data**

US 2014/0319814 A1 Oct. 30, 2014

OTHER PUBLICATIONS

Naseem Daher, Chuang Wang, and Monnika Ivantysynova, Novel Energy-Saving Steer-by Wire System for Articulated Steering Vehicles: Study, Jun. 3-5, 2013 Indiana USA.

(Continued)

Related U.S. Application Data

(63) Continuation-in-part of application No. 13/068,829, filed on May 23, 2011, now abandoned.

Primary Examiner — John Walters

(51) **Int. Cl.**

A43C 15/14 (2006.01)
A63C 7/10 (2006.01)
A43B 3/00 (2006.01)
A43B 5/04 (2006.01)

(Continued)

(57) **ABSTRACT**

Systems for producing traction, wherein each traction system is an apparatus that provides traction on snow and ice covered surfaces.

A pair of Back Country skis each are mounted with an apparatus; having DC powered controls, tilt switch, pressurized carbon dioxide (CO₂) gas powered pneumatic actuators operating gripping parts; controlled by a servo unit. A pair of foot wear (hiking boots) having a DC powered servo-solenoid-valve units controlling pressurized CO₂, gas powering pneumatic rotors, operating, hydraulic pumps, actuators with gripping parts. A pair of snowmobile skis each having an assembly of parts; driven by an hydraulic rotor that pivots the skis, adjusting their position when cornering, providing traction, according to a snowmobile steering system. And is powered and controlled by at least one of: hydraulic steering system, an electro-hydraulic steering system; an electric power steering system using an electric motor instead of hydraulic rotor.

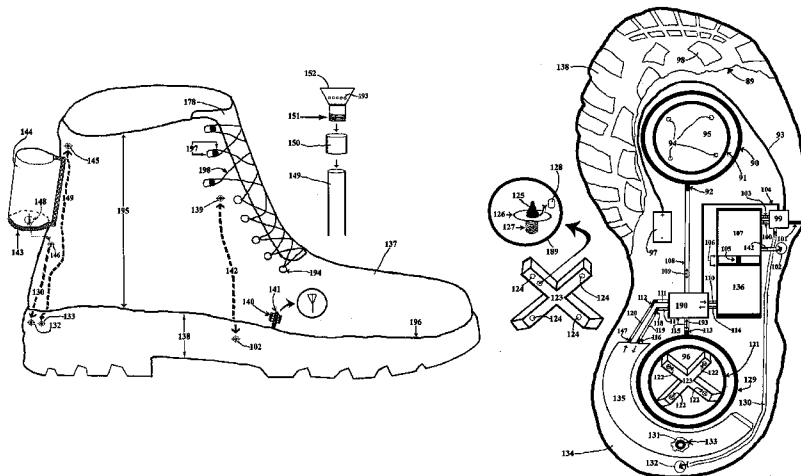
(52) **U.S. Cl.**

CPC **A43C 15/14** (2013.01); **A43B 3/0015** (2013.01); **A43B 5/0411** (2013.01); **A43B 5/0496** (2013.01); **A63C 7/005** (2013.01); **A63C 7/1086** (2013.01); **A63C 9/0807** (2013.01); **A63C 2203/12** (2013.01); **A63C 2203/22** (2013.01); **B62M 2027/025** (2013.01)

(58) **Field of Classification Search**

CPC A63C 7/00; A63C 7/005; A63C 7/10; A63C 7/1013; A63C 7/1046; A63C 7/1053; A63C 7/1086; A43C 15/06; A43C 15/061; A43C 15/063; A43C 15/065; A43C 15/066; A43C 15/14; A43C 15/062

5 Claims, 7 Drawing Sheets



US 9,326,567 B2

Page 2

(51)	Int. Cl.								
	<i>A63C 7/00</i>	(2006.01)		5,557,865	A *	9/1996	Sjosvard	A43C 15/14	
	<i>B62M 27/02</i>	(2006.01)						36/134	
	<i>A63C 9/08</i>	(2012.01)		6,449,880	B1 *	9/2002	Calabrese	A43C 15/14	
								36/61	
				7,490,418	B2 *	2/2009	Obeydani	A43C 15/14	
								36/61	
(56)	References Cited			2004/0140637	A1 *	7/2004	Cook	A63C 5/06	
								280/28.11	

U.S. PATENT DOCUMENTS

4,986,561	A *	1/1991	Humphrey	A63C 11/00	
				280/605	
5,497,565	A *	3/1996	Balgin	A43C 15/14	
				36/134	

OTHER PUBLICATIONS

Hydraproducts Limited Gloucestershire UK, Jan. 9, 2003.

* cited by examiner

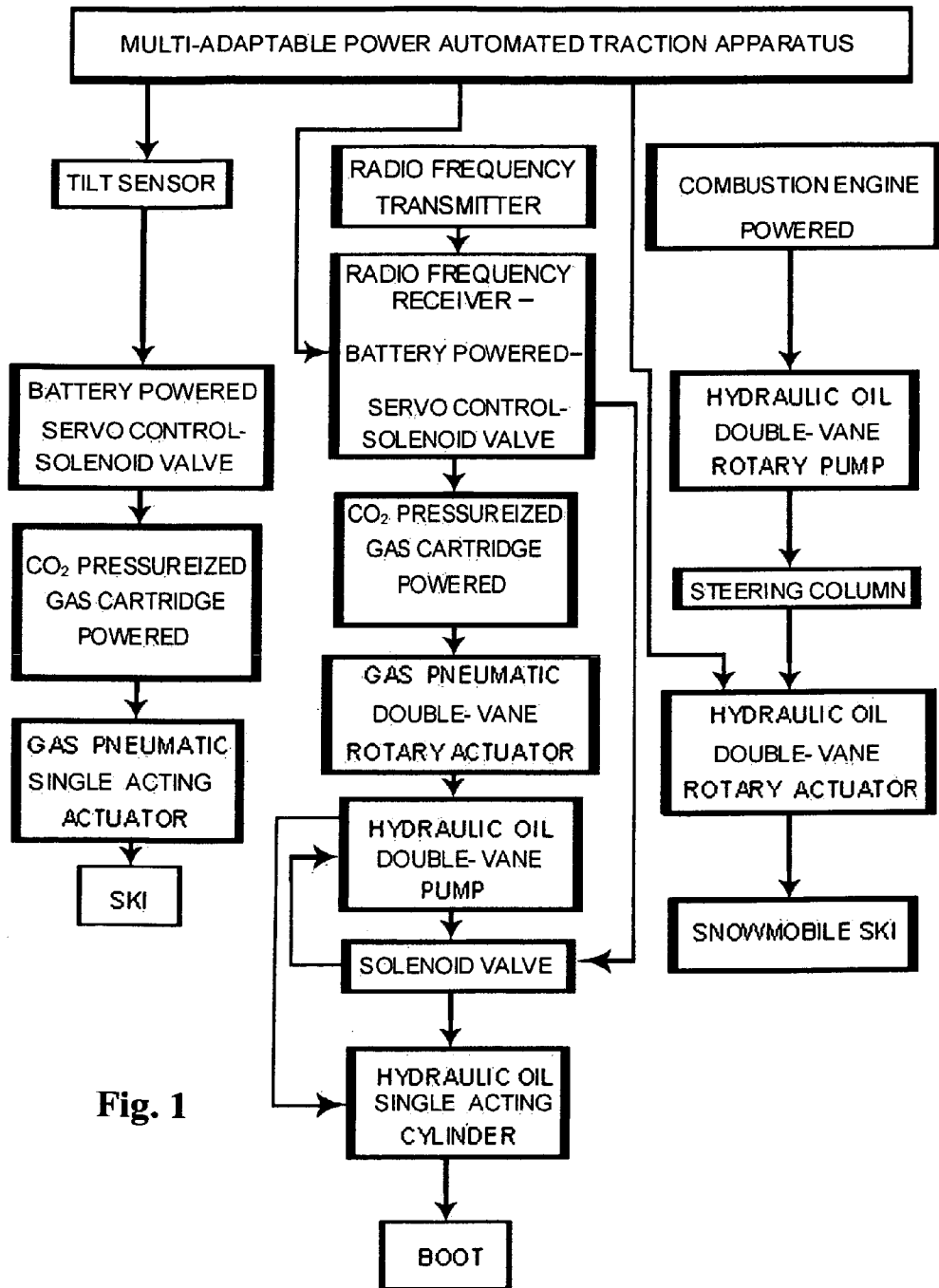


Fig. 1

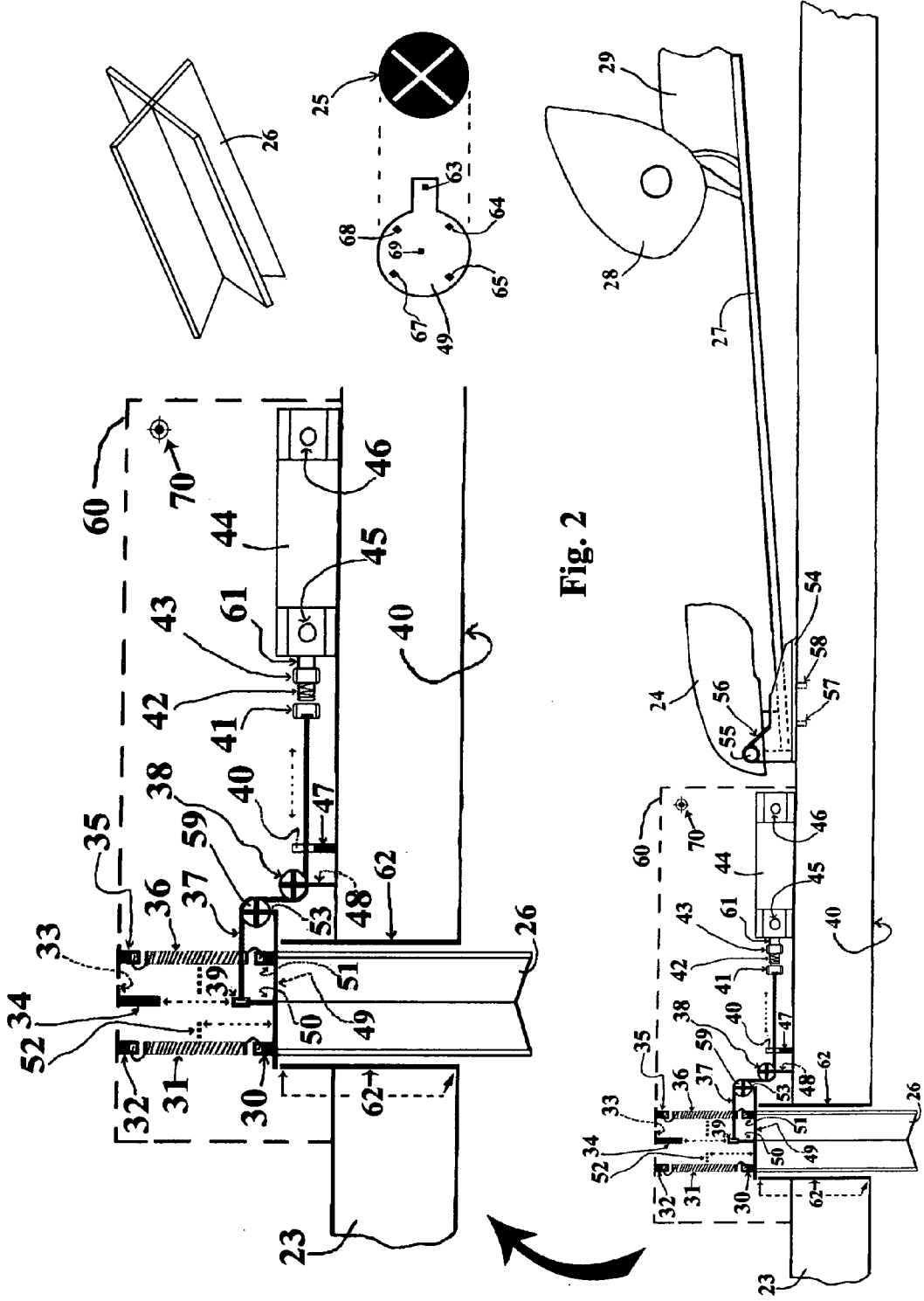
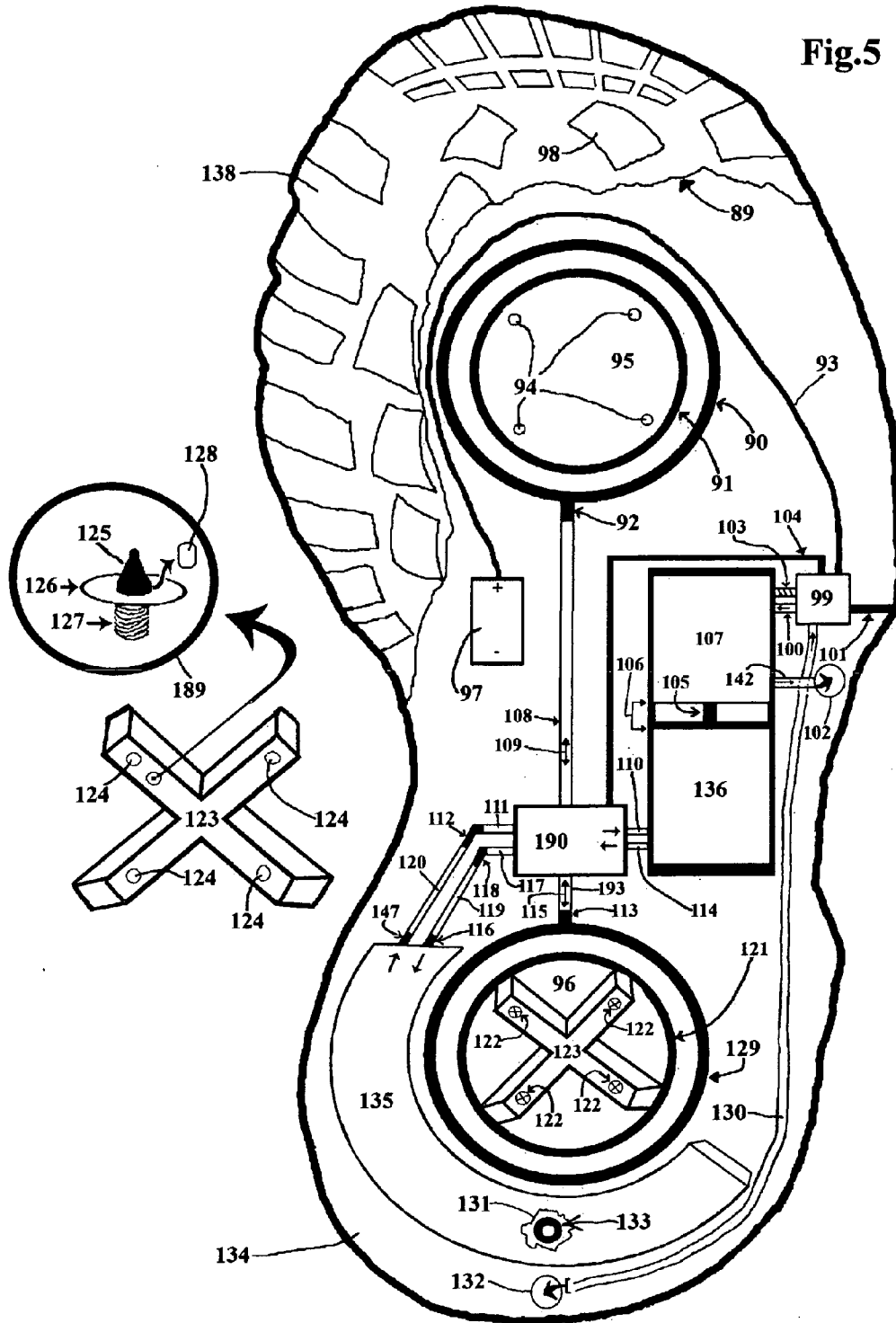


Fig. 2

Fig.5



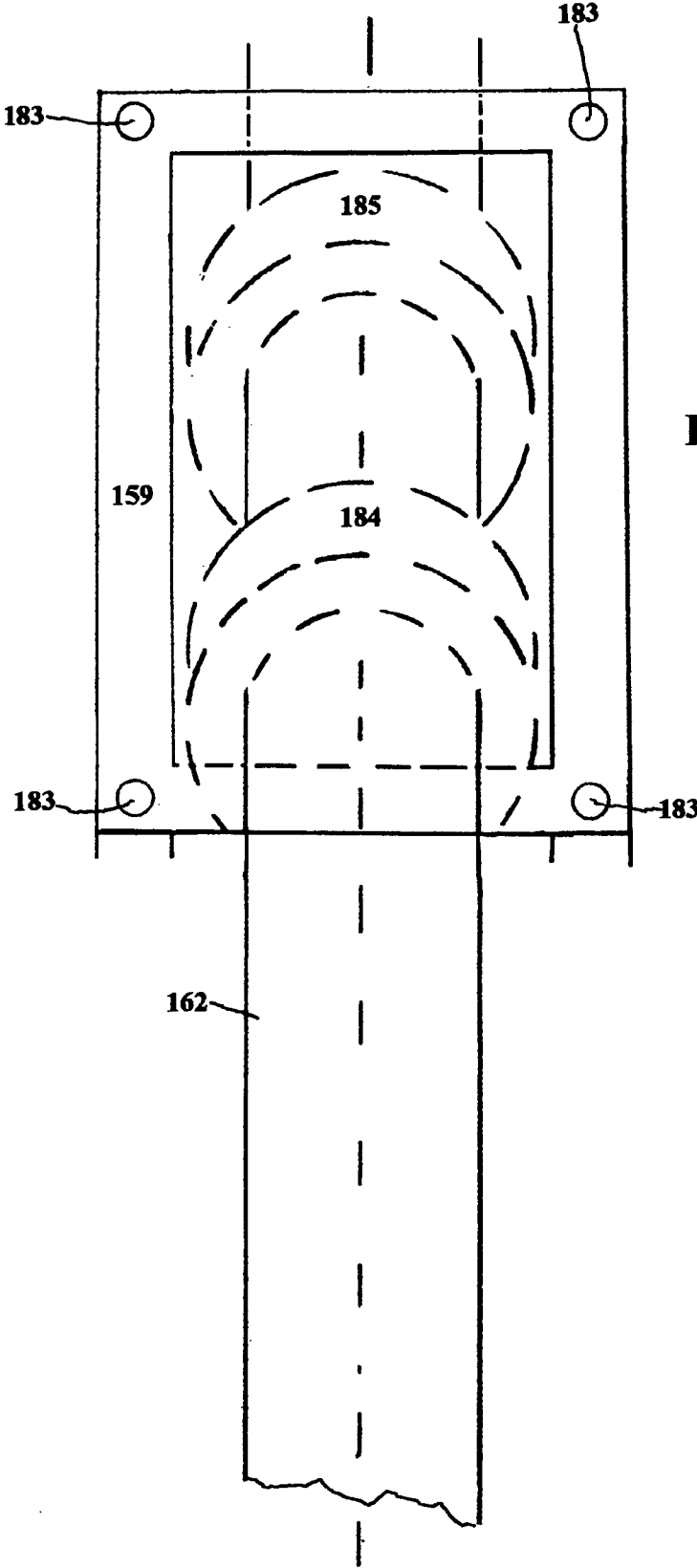


Fig. 7

MULTI-ADAPTABLE POWER AUTOMATED TRACTION APPARATUS

This is a Continuation in part of, U.S. application Ser. No. 13/068,829 Dated: May 23, 2011

BACKGROUND OF THE INVENTION

1. Field of the Invention

The present invention relates to a ice and snow traction apparatus that is adaptable to back country skis, foot wears, and snowmobile skis using; three separate systems to obtain the desired traction apparatus adapted for each back country skis, foot wears, and snowmobile skis.

2. Description of the Related Art

Innovations in the field of hydraulic power and more specifically micro hydraulic power units. One such company "HYDRAPRODUCTS LIMITED" based in Gloucestershire UK. And included here as reference. Has for example; very small DC powered hydraulic Micro reversible power packs. The need for miniaturization in many sectors of industry is a ever growing reality in a global economy. Many new products can only come about, and in many instances only possible; if manufactured technologies are made smaller, yet retain performance and reliability. Therefore hydraulic power technologies have many years of experience, and dependability. The same can be said for gas pneumatic powered technologies that have sized down parts, and are performance proven.

Winter sport technologies can benefit greatly with both hydraulic and pneumatic parts, now that there is a growing need for smaller technologies. Robotic is an other field that can benefit from small hydraulics, and small pneumatics parts.

An other field of technologies that robotics can benefit from is combining hydraulics, pneumatics, with interface broadband communication applications.

In an other aspect about hydraulics, concerning power steering systems, when electric power steering systems are pressing to compete with hydraulic power steering systems.

A combination of electro-hydraulic systems are also evolving; one such example is described in: "the 13th Scandinavian International Conference on Fluid Power, SICFP2013, Jun. 3-5, 2013, Linkoping, Sweden (NOVEL ENERGY-SAVING-STEER-BY-WIRE SYSTEM FOR ARTICULATED STEERING VEHICLES: A COMPACT WHEEL LOADER CASE STUDY), Naseem Daher, Chuang Wang, and Monika Ivantysynova. School of Mechanical engineering, Purdue University, West Lafayette, Ind., USA."

And included here as reference.

Snowmobiles have benefited greatly from new technologies in recent years; yet traction remains a problem, when turning a snowmobile especially on hard packed snow, and ice conditions; and even more so at higher speeds. Snowmobile skis tend to sheer in these condition; or if turning a sharp curve. Here again speed is a factor.

Or when turning in a slanted position on a slope. Some remedy for these problems is for the snowmobile driver to lean into the curve. What is needed is a Snowmobile more suitably adapted to cut a curve (follow a curved trajectory line) and maintain more consistency with an inbounds center of gravity; then would a conventional snowmobile directional system. The stability of the snowmobile would also improved with the present embodiment since both skis of a snowmobile are leaning into the curve helping to keep the center of gravity

from shifting all its pressure to the outward ski, causing an improved equilibrium of gravity between both skis. And therefore greater traction.

SUMMARY OF THE INVENTION

The present invention relates to traction means; that are provided for back country skis, and for hiking boots, and for a pair of snowmobile skis; for gaining traction on snow and ice covered surfaces.

In one aspect of the present invention, a light weight system, forming a self sufficient traction apparatus for back country skis used for climbing. Pressurized CO₂ gas (incoming from a small cartridge), is used to power a pneumatic system for automating a gripping part. Using a tilt sensor as a switch for a DC powered servo-solenoid valve. No need to push buttons or transmitters for traction, or retraction; since the adjustable tilt sensor does so automatically. If the skis are ascending, then that deploys gripping part. Or if the skis are descending, or in a horizontal positions; then the gas supply is cut off by the solenoid valve; and the gripping part using only mechanical parts retracts.

In an other aspect; a pair of hiking boots are equipped with traction parts that deploy and retract; and that are controlled from an exterior incoming radio frequency transmitter that can come from many different sources. For example, computer module, mobile phone, radio frequency transmitter. The boots can also be equipped with an on off switch. A receiver-servo-control-solenoid valves unit, that is DC powered; and a multi-solenoid valve unit to operate controls. Pressurized CO₂ gas (incoming from a small cartridge) to power a gas pneumatic rotary actuators that operate oil hydraulics pumps, and oil hydraulic actuators for deploying gripping parts and retracting them.

Yet in an other aspect, a pair of snowmobile skis using oil hydraulic rotary actuators or electric motors to operate a snowmobile skis traction apparatus; that are connected and controlled by the power steering system, of a snowmobile. The pair of skis pivot around a drive shaft that brings the skis to an angle, when turning; producing the traction.

The apparatus can adapt to an electro-hydraulic steering system. Or an electric power steering system; by using the electric motor; as part of the apparatus instead of the hydraulic rotary actuator.

BRIEF DESCRIPTION OF THE DRAWINGS

FIG. 1 is a block diagram containing writing describing the basics of a multi adaptable power-automated traction apparatus; for a ski, for a boot, and for a snowmobile ski.

FIG. 2 shows an exploded cross-sectional view of a back country ski having a traction apparatus; with an enlarged image of the traction apparatus above, and the gripping part and fixing plate to the right.

FIG. 3 shows an exploded cross-sectional view of a gas pneumatic actuator and parts set up(left), for the back country ski to (FIG. 2); a pressurized Carbon dioxide CO₂ gas cartridge 86, with an ensemble of related parts from (center to right) used for the ski to (FIG. 2), and similarly used for a boot to (FIG. 4), and (FIG. 5).

FIG. 4 shows an exploded cross-sectional view of the inward side of a left hiking boot; having a carrying compartment (left) a receivers antenna (lower right); hydraulic air vent cap (filler breather) with tube parts (top right); dotted lines with target signs.

FIG. 5 an exploded cross-sectional fractured view showing the underside, and inside of the outsole 138, of the left boot

137 to (FIG. 4); with an ensemble of components that are part of the traction apparatus of boot 137 to (FIG. 4); a traction part (left) of outsole 138.

FIG. 6 shows an exploded cross-sectional partially fractured of snowmobile ski 176, mounted with a traction apparatus for engaging a snowmobile connecting member 182; a diagram (top right) of ski movements.

FIG. 7 shows an above view of a cover 159, and to 159 (FIG. 6), for engaging the traction apparatus to (FIG. 6); and other related parts with the snowmobile connecting member 182 to (FIG. 6).

DETAIL DESCRIPTION OF THE INVENTION

The Present Invention is Described with Reference to the Drawings

To provide a certain order and steps, and help the viewer save time and have a clear understanding; FIG. 2, FIG. 4, FIG. 5; are explained alongside to FIG. 3; that describes parts for using pressurized carbon dioxide CO₂ gas; and the components therein. The traction apparatus described to FIG. 4, and FIG. 5, uses some parts to FIG. 3; comprising: cartridge 86, cartridge holder 88, and rubber cover 87, and pneumatic elbow treaded-to-tube adapter 78; as does similarly the traction apparatus described to FIG. 2.

FIG. 1, shows a rectangle box containing the title of the invention linked to three vertical columns of inter-connected boxes (identified by a line or arrow). Each said column describes a specific adaptable power-automated traction systems of the apparatus; yet each system (related to column) retains the use of at least one of, gas pneumatic, oil hydraulic components; to automate and operate the apparatus.

The first column to the left describes the basic components needed to provide power automated traction for skis. Preferably used for climbing on snow and ice covered surfaces (terrain) with a pair of back-country skis. Although it could in the same way be adapted for climbing using a pair of cross-country skis (not shown).

The center column describes the basic components needed to provide power automated traction for a pair of hiking boots used on ice and ice covered snow surfaces, (terrain). In the present embodiment the foot wear described is a hiking boot; although the system can be adapted in the same way for shoe(s) (not shown).

The third column to the right describes the basic components needed to provide power automated traction for snowmobile skis, that allows a pair of snowmobile skis to run parallel with a curved trajectory line when turning (cornering) as they pivot accordingly with the position of a handlebars steering shaft of a snowmobile; to provide greater traction on snow and ice surfaces (terrain).

More specific details of the apparatus described to FIG. 1 are to be found in FIG. 2; FIG. 3; FIG. 4; FIG. 5; FIG. 6; FIG. 7.

FIG. 2, shows a back-country ski 23 having a power automated traction apparatus sitting on, and at the for-front of a back-country ski binding system. The binding system is only for reference, and given a short description for a better understanding of the disposition and function of the apparatus, in conjunction with the binding system.

Toe binding 24, pivots on a shaft 55 that is held by pivoting part 56 that is held to the ski 23 by base plate 54 (part of 56) using screws 57 and 58 drilled into ski 23. The rear binding 29 having a boot retaining jaw 28 to lock the ski boot (not shown) between 24 and 29; herein the boot is supported by part 27 that moves accordingly with the toe binding 24. The traction

apparatus is placed at the front of the toe binding 24 leaving sufficient free movement space so as not to interfere with metal cover 60 (that protects the components of the apparatus from exterior environment) that is held to the ski 23 by screws (not shown). The traction apparatus is placed in the above described position for climbing vertically having the added weight of the skier (not shown) to increase the contact of gripping part 26 with ice and ice covered snow surfaces (not shown). An exploded 3 dimensional view of 26 is shown top right of FIG. 2. Gripping part 26 made of material(s) (preferably aluminum for strength and light weight), has an extruded (X) shaped frame; wherein both ends of 26 are equal in every aspect and best described by the white(X) in a black circle that is a plastic bushing part 25. The X shaped end of 26 coming in contact with ice, and snow underneath ski base 40 (as shown in FIG. 2) creates the traction that prevents the ski 23 from sliding in any direction; on ice and especially on snow surfaces. This is because 26 sinks into the snow wherein the extruded part (between ends) of 26 forms a four sided (V) shape holding to the snow. This is clearly visible from the exploded dimensional view of 26. Gripping part 26 fits vertically into the groove (white X) of bushing part 25. Bushing part 25 fits firmly (snug) between position indicators 62. And is limited to position indicated by arrows 62; wherein 25 vertically traverses a predrilled hole in line with binding 24 of ski 23 (transparent view showing only gripping part 26). Bushing 25 is cemented (using glue) on the barrel side inside the hole (said barrel side; area between position indicators 62) in ski 23. The top of 26 is spot welded to 64, 65, 67, 68, 69 of metal fixation plate 49 (exploded view of 49 middle right); then welded all around for strength. Fixation plate 49 sits flat on top of bushing part 25. Welding spots of fixation plate 49 correspond to the opposite side of fixation plate 49 to position other welding spots for holding metal parts as follows: Spring anchor stud 30 (above 65) having a hole to hook spring 31. Spring 31 reaches to spring anchor stud 32 that is spot welded to the underside of cover 33. Cover 33 is defined by a continual dotted line reaching ski 23 on the left and right. Spring anchor stud 51 (above 68) for hooking spring 36. Spring 36 held by spring anchor stud 35 spot welded to underside of cover 33. Spring 31, and 36 are used to retract gripping part 26 when not in use. Stud 34 is spot welded to underside of cover 33 directly in line above metal anchor 39 welded on top of stud 50. 50 is spot welded at the other end to fixation plate 49; in line above position 69. Gripping part 26 is assigned a limited vertical travel distance that is indicated by a dotted line 52 and is indicated by an arrow from dotted line 52 to plate 49. The end part of 34 facing the top part of anchor 39 indicated by an arrow controls and determines the travel distance limit 52. And is achieved when 34 and 39 make contact as 26 is retracted by springs 31 and 36 and travels no further. This way the opposite end of 26 comes flush with the bottom end of bushing 25 (not shown) and flush with the ski base 40.

A load-rated wire rope lanyard 37 (known to the art) travels to and fro between anchor 39 and threaded nut 41. The load-rated wire rope lanyard 37 is fix into to anchor 39 attached to a threaded nut 41 that screws onto threads 42 of piston 61; secured into place by a threaded lock nut 43.

A single acting gas pneumatic actuator 44, operates and automates the gripping part 26 by pulling in the load-rated wire rope lanyard 37 via the piston 61, that lowers gripping part 26 into the desired traction position. The load-rated wire rope lanyard 37 is guided by a rectangle ringed threaded stud 47 that screws into a pre drilled hole (not shown) of ski 23; and is further guided by a metal Dowel pin 48 welded at one end to metal pulley 38; wherein the other chamfered end of 48

is set snug into a predrilled hole (not shown) into ski 23. A second pulley 59 held by stud 53 that is welded to position 63 on top of plate 49.

Notes: In the final Draft, if need be there may be added (not shown) (To further help guide the load-rated wire rope lanyard 37. A third pulley welded to a stud that is welded on top of fixation plate 49; set between 50 and 59. This arrangement can and may be added to the apparatus to further prevent slack of load-rated wire rope lanyard 37; as piston 61 extracts causing a slack of load-rated wire rope lanyard 37 between anchor 39 and pulley 38 (more precisely on top of pulley 59 has 39 raises to meet with 34. If this where to be necessary, then the load-rated wire rope lanyard 37 would have to pass underneath the said third pulley in order to firmly guide and prevent any slack or deviation of the prescribed course set forth to FIG. 2).

Actuator 44 is anchored on the ski 23 (anchored to ski not shown) via two pneumatic mounting brackets placed around the barrel; that is one next to port hole 45 and the other next to port hole 46. Both said pneumatic mounting brackets are held down on the ski 23 via screws.

To retract gripping part 26; the single acting gas pneumatic actuator 44 reverses direction of the load-rated wire rope lanyard 37 via piston 61 that self extracts, common with single acting gas pneumatic actuator (known to the art). The gripping part retracts from gripping position to dotted line 52; and further helped along by springs 31 and 36, preventing slack of load-rated wire rope lanyard 37.

Single acting gas pneumatic actuator 44 is powered by carbon dioxide CO₂ pressurized gas cartridge 86 (FIG. 3).

Further explanation to FIG. 2 is to be found to FIG. 3.

FIG. 3, shows a pressurized carbon dioxide CO₂ gas cartridge 86 (top center) having threads 85 that screw into threaded (thread not shown) cup 82 (screws clockwise indicated by arrow, shown far right 86). A fractured view 81 shows cup 82 is part of bottom 80 inside cartridge holder 88. A flexible rubber cover 87 fits over 88 to prevent exterior elements infiltration. An exploded view 71 shows again cup 82. Hole 84 (covered by led seal not shown) is punctured by pype 188 that fits snug inside hole 84. Said puncture occurs as the Carbon dioxide CO₂ gas cartridge 86 is screwed securely into cup 82. On exterior underside of bottom part 80, of cartridge holder 88; is located a threaded hole 76 (shown far right ;thread not shown) that connects with threaded end 77 of a pneumatic elbow threaded-to-tube adapter 78 (known to the art); wherein the opposite end is a tube adapter 79.

The traction apparatus to (FIG. 2) will now be explained along side; and accordingly with the above first paragraph to FIG. 3.

Therefore proceeding.

In turn 79 connects with one end of a flexible pneumatic plastic tube (plastic tube indicated by arrows); and the opposite tube end connects with adapter 73 of the servo control-solenoid valve unit 74; using a pneumatic straight tube-to-thread adapter (not shown). The above paragraphs explains how the pressurized carbon dioxide CO₂ gas travels through the above arrangement to reach the servo control-solenoid valve unit 74.

In one aspect shown far left to FIG. 3, is an arrangement of components parts found underneath cover 60 to (FIG. 2) (that is not visible to FIG. 2) that powers the traction apparatus, for the back country ski to (FIG. 2); that comprising: a single acting gas pneumatic actuator 44 alongside to cartridge holder 88; containing CO₂ gas cartridge 86 inside (shown far right to FIG. 3) mounted with said rubber cover 87 not visible with (FIG. 2). The position of some components within the arrangement may vary in the final draft.

Said unit 74 is powered by DC voltage (battery) 75. A wire cable 186 connects 75 with unit 74 indicated by arrow. A tilt sensor 66 (known to the art) is fixed on top of the ski 23 (FIG. 2) (tilt sensor 66, fixed to ski not shown to FIG. 3). Said tilt sensor 66 is connected by wire cable 187 (indicated by arrow) with the servo control-solenoid valve unit 74. Said tilt sensor 66 acts as an on/off switch for 74. Tilt sensor 66 is adjusted (adjustment not shown) to switch on 74, for example: between 5 and 50 degrees of inclination (from plane); when the ski 23 (FIG. 2) is placed in a vertical ascending position (slope, raised terrain); and turns off unit 74 between 51 and 90 degrees inclination (from plane). Therefore when the ski to 23 (FIG. 2) is tilted sufficiently; the tilt sensor 66 switches on (activates) unit 74 that opens a solenoid valve inside 74 (valve not shown) via tube adapter 73. This action releases pressurized Carbon dioxide CO₂ gas from cartridge 86; said pressurized gas crossing into unit 74 (as explained earlier in paragraph one to FIG. 3; and therefore proceeding) and out through adapter 72 that is connected with a pneumatic straight threaded tube-to-tube adapter (adapter not shown), and at the opposite end of pneumatic tube (indicated by an arrow); that in turn connects to a pneumatic tube-to-threaded elbow (same as 78) that connects to port hole 46 of single acting pneumatic actuator 44, and 44 to (FIG. 2). This above described action retracts piston 61 that pulls in the load-rated wire rope lanyard 37 (FIG. 2) that lowers gripping part 26 (FIG. 2) to traction position.

When the ski to 23 (FIG. 2) returns to horizontal position, or encounters vertical descending terrain; the tilt sensor 66 will switch off unit 74 that will close the solenoid valve inside 74 cutting off the CO₂ gas pressure. This action will cause single acting pneumatic actuator 44 to self extract piston 61 that will reverse the direction of the load-rated wire rope lanyard 37 (FIG. 2) retracting gripping part 26 (FIG. 2) as explained in the last paragraph to FIG. 2. The remaining CO₂ gas inside the single acting pneumatic actuator 44 will exit via port hole 45. Found on one side of metal cover 60 (FIG. 2); a vent hole 70 (FIG. 2) (indicated by a target sign) prevents any CO₂ gas pressure from building up inside said metal cover 60 (FIG. 2).

Note: All parts of cartridge holder 88 are made of metal, with the exception of rubber cover 87. The rubber cover 87 can be molded into shape. Cartridge holder 88 can be machined; then assembled part by part via threads or welded. It can and may be fabricated using a 3D printer or prototyped, from a digital 3D draft.

At least one of a pneumatic line filter/regulator (not shown); may be added to pneumatic tubing between 79 and 73. Said filter, controlling debris/humidity; said regulator controls gas pressure preventing pressure build up. Pneumatic line filter/regulator components are (known to the art).

FIG. 4, shows a left side (left foot use) leather hiking boot 137, having a rubber outsole 138, that are both parts of a pair of boots. The said pair of boots; wherein each boot as its own integrated power-automated traction apparatus; providing power-automated traction on ice, and ice covered snow surfaces (terrain). Although the right boot is not shown for practical reasons, It is part of; and as the same traction system as the left boot 137 of the present embodiment. The left Boot 137 was chosen, since one of the pair was needed to describe the said pair of boots; and to hopefully provide a clear understanding; and mention of the right boot only where differences occur between the pair.

Notes: Brief explanations and terms of the shell structure to boot 137, is given; along with specific details of the traction apparatus to boot 137. More specific shell structure details of boot 137, are to be found in the final assembling; explained in

the few last paragraphs to FIG. 4. All and any solenoid valves inside any components, units, to FIG. 4 and (FIG. 5) are all indicated but not shown.

Most pneumatic adapters (fittings), inserts, grommets, screws, are explained but not shown for practical reasons. All are made of plastic except grommets are made of metal.

All hydraulic adapters (fittings) are made of metal; but not all are shown for practical reasons.

Proceeding with the description to FIG. 4.

Because of the opposite curvature (normal curvature found in foot wear in accordance with a right foot or left foot) of the right boot as opposed to the left boot 137; and of the configuration of the OUTSOLE 138, (the outsole is the term for boot sole; and is the part that comes in contact with the ground; and is known to the art) and of 138 to (FIG. 5). The components that make up the traction apparatus are therefore positioned oppositely for the right boot as opposed to the left boot 137; and the same is said for the outsole 138, and view showing the underside 138 to (FIG. 5). Each boots are insulated for cold weather as would be expected of any boot for winter use; therefore insulation is not shown. However insulation is briefly explained further on; where it becomes apparent that some parts of the apparatus to boot 13 pass through or lodge inside the insulation.

Boot 137 comprises: A radio receiver antenna 141 (an arrow points to antenna symbol) that is sewn (using material fiber threads to make double diamond stitches) into place, stitches 140 on the exterior leather lining of boot 137. Said antenna 141 is connected to a wire cable 101 (FIG. 5) that is connected to a unit 99 (FIG. 5) comprising: a receiver-servo-controller-solenoid valve. Said unit 99 (FIG. 5) is DC voltage powered; preferably by a single 6 volts battery; that is connected with, and placed inside the battery compartment 97 (FIG. 5); (Battery and connections between battery compartment and battery not shown). Unit 99 (FIG. 5) is connected to the battery compartment 97 (FIG. 5) via cable wire 93 (FIG. 5).

Said battery is not limited to 6 volts, or a single battery. A 6 volt rechargeable power pack (not shown) instead, and in place of said battery; can and may be used, having a plug (not shown) for recharging via the outsole 138. Unit 99 (FIG. 5), is grounded via wire 103 (FIG. 5) to 107 (FIG. 5).

An exterior source radio frequency transmitter; for example: an interface broadband communication system that can operate (transmit) from at least one of a; computer module, mobile phone, remote transmitter; that is used to switch on/off the traction apparatus via said receiver to unit 99 (FIG. 5). Unit 99 is preprogrammed via a computer; so it can execute commands to operate the traction apparatus. Note: the traction apparatus switches on/off simultaneously for each boot of the pair of boots via the same radio frequency signal emitted by the said transmitter. Most of the components, are found inside the outsole 138 (FIG. 5); and more specifically of area 134 (FIG. 5). Area 134 (FIG. 5) is limited to the south of fracture line 89 (FIG. 5) that is bordered to the north by the fractured view showing the underside of outsole 138 (FIG. 5); having LUGS 98 (FIG. 5), (Lugs -projecting part used for traction, known to the art).

NOTE: All of the parts, and explanation to the first paragraph to (FIG. 3) are now needed to fully understand and explain their use with FIG. 4 and (FIG. 5); and as stated in the first three lines of the "detail description of the invention."

A leather carrying compartment 144, held together by stitches 143; wherein stitches 143 are further sewed to the boot 137, showing 144 attached to the back end of 137. A leather carrying compartment 144, held together by double diamond stitched seams 143; wherein seams 143 are further

sewed to the back end of UPPER 195 (the upper, known to the art; is the portion of boot above the outsole).

A transparent view showing hole 148, on the exterior underside bottom of 144 herein threaded end 77 (FIG. 3), of a pneumatic elbow threaded-to-tube adapter 78 (FIG. 3) enters and connects to hole 76 (FIG. 3) of a cartridge holder 88 (FIG. 3). Said 88 (FIG. 3) containing a pressurized carbon dioxide CO₂ gas cartridge 86 (FIG. 3); that fits snug inside 144. A rubber cover 87 (FIG. 3) fits onto 88 (FIG. 3) protecting 88 (FIG. 3) from exterior environment. Tube adapter end 79 (FIG. 3) of said 78 (FIG. 3) connects with one end of tube 130; wherein the opposite end of 130 enters through a two-piece metal grommet press mounted around hole (Grommet not shown) 146 (hole 146 indicated by a target sign) holding to the exterior leather lining of the upper 195. Herein silicon caulking is used to seal any gaps around tube 130 and the Grommet so that no water, or debris gets inside the boot lining. A transparent view showing tube 130 (indicated by dotted line with arrow ends) as it then continues down along insulation material(s) in between the exterior, and interior lining of upper 195; and through hole 132 (FIG. 5), indicated by a target sign inside the outsole 134 (FIG. 5).

An arrow pointing in the hole 132 (FIG. 5) indicates where the tube 130 (FIG. 5), came from (target sign 132 FIG. 4); and connects via a tube-to-thread adapter port (port not shown) of receiver-servo-controller-solenoid valve unit 99 (FIG. 5). An arrow pointing to 99 (FIG. 5) indicates direction the carbon dioxide CO₂ gas is flowing inside tube 130 (FIG. 5). When the receiver of unit 99 (FIG. 5) captures said exterior radio frequency signal via antenna 141; activating unit 99 (FIG. 5), that switches on and begins to execute a sequence of preprogrammed commands. Said solenoid valve inside unit 99 (FIG. 5) opens via connecting port 100 (FIG. 5) sending pressurized carbon dioxide CO₂ incoming from tube 130 (FIG. 5) into a gas pneumatic double-vane rotary actuator 107 (FIG. 5); making the said rotor turn. The said CO₂ gas exits 107 (FIG. 5), via a pneumatic tube 142 (FIG. 5) having an arrow pointing in direction of gas flow (port hole and adapter for tube 142 (FIG. 5) not shown). Tube 142 (FIG. 5) crosses over tube 130 (FIG. 5) and enters into hole 102 (FIG. 5); A transparent view shows a dotted line with arrow ends that indicates the pneumatic tube 142; passing in-between the exterior leather lining, and interior lining of upper 195; from hole 102 FIG. 4, (indicated by target sign) to said hole 139 (indicated by target sign). A two-piece metal grommet is press mounted around hole 139 (Grommet not shown); that is one part on the inside, and the other on the exterior of 139. The opposite end of tube 130 connects with a right angle tube-to-female adapter. The female end is positioned to exit from the interior to the exterior of grommet mounted hole 139. A male insert ring having a hole in the center where CO₂ gas exits the boot 137 (not shown) connects from the exterior onto to the female end. 139 is positioned high on the boot to help prevent exterior environmental elements from entering.

Gas pneumatic double-vane rotary actuator 107 (FIG. 5) having a metal shaft 105 (FIG. 5), that rotates; is connected to, and activates hydraulic oil double-vane pump 136 (FIG. 5). A metal frame that forms a visible rectangle around the perimeter of both 107 (FIG. 5), and 136 (FIG. 5); keeps them well aligned; emphasized by 106 (FIG. 5); and was put in place to prevents misalignment of shaft 105 (FIG. 5). Hydraulic oil double-vane pump 136 (FIG. 5) is feed hydraulic oil via hydraulic oil reservoir 135 (FIG. 5) wherein said hydraulic oil arrives via threaded-to tube adapter 147 (FIG. 5), connected with tube 120, connected to elbow tube-to-tube adapter 112 (FIG. 5), connected to tube 111 (FIG. 5). The opposite end of 111 (FIG. 5) connects (adapter not shown) to unit 190 (FIG.

5). Unit **190** (FIG. 5) comprising: a servo-control-multi-solenoid valves (known to the art; and having **4** internal valves not shown). Said unit **190** (FIG. 5) is powered and controlled by unit **99** (FIG. 5) and connects to **190** (FIG. 5) via wire cable **104** (FIG. 5). Unit **190** opens an inside valve adjacent to treaded-to-threaded adapter **110** (FIG. 5); herein hydraulic oil enters, pump **136** (FIG. 5). The hydraulic oil then exits pump **136** (FIG. 5) via threaded-to-threaded adapter **114** (FIG. 5) to re-entering unit **190** (FIG. 5) indicated by arrow. From unit **190** (FIG. 5) two separate hydraulic oil single acting cylinders comprising: **90** (FIG. 5), and **129** (FIG. 5). Said cylinder **90** (FIG. 5) containing piston **95** (FIG. 5), and cylinder **129** (FIG. 5) containing piston **96** (FIG. 5) wherein both said pistons extrude simultaneously; and is explained as follows.

Piston **95** (FIG. 5), (piston area limited via circle **91** (FIG. 5)) extrudes from incoming hydraulic oil pressure created by the pump **136** (FIG. 5); pushing hydraulic oil inside tube **108** (FIG. 5); connected to **190** (FIG. 5) via threaded-to-tube adapter (adapter not shown); in turn the opposite end of tube **108** (FIG. 5) connects to cylinder **90** (FIG. 5) via tube-to-threaded adapter **92** (FIG. 5). Hydraulic oil flow indicated by directional two-way arrow **109** (FIG. 5) of tube **108** (FIG. 5).

Piston **96** (FIG. 5) at the heel end; of the underside of outsole **138** (FIG. 5) is extruded (piston area limited via circle **121** (FIG. 5) from incoming hydraulic oil pressure created by **136** (FIG. 5); pushing oil inside tube **193** (FIG. 5); connected to **190** (FIG. 5) via threaded-to-tube adapter; in turn the opposite end of tube **193** (FIG. 5) connects to **129** (FIG. 5) via tube-to-threaded adapter **113** (FIG. 5). Hydraulic oil flow indicated by directional two-way arrow **115** (FIG. 5) inside tube **193**.

Each piston **95** (FIG. 5), and **96** (FIG. 5) are each equipped with a gripping part **123** (FIG. 5). For practical reasons one gripping part **123** (FIG. 5) is not mounted to piston **95** (FIG. 5), to show threaded holes **94** (FIG. 5) (threads not shown) visible on the flat surface of piston **95** (FIG. 5) that are used to mount **123** (FIG. 5) to said pistons using screws (small Bolts) **122** (FIG. 5) that hold **123** (FIG. 5) via holes **124** (FIG. 5) firmly in place as shown via piston **96** (FIG. 5).

Pistons **95** (FIG. 5), and **96** (FIG. 5), both extrudes so that gripping parts **123** (FIG. 5), do not exceed but instead equal in length the rubber lug(s) **98** (FIG. 5). This way the lugs **98** (FIG. 5) of outsole **138** (FIG. 5) and gripping parts **123** (FIG. 5), together come in direct contact with a surface (terrain). This step will be explained in more detail as the outsole **138** develops further on.

Said gripping parts **123** (FIG. 5) are (X) shaped for a no slip on ice, and ice covered snow surfaces (terrain). Both traction parts to boot **137** can, and may be equipped with metal studs **189** (FIG. 5), (shown in an exploded view to (FIG. 5)); and mounted to gripping part **123** (FIG. 5) to the left of outsole **138** (FIG. 5) for example. An inserted stud **189** (FIG. 5) is screwed via threads **127** (FIG. 5) into a threaded hole (threaded holes for studs not shown) to **123** (FIG. 5). Using a key (key not shown) that fits the base part **125** (FIG. 5) via square sides **128** (FIG. 5), to mount said studs; tightening them no further than metal plate **126** (FIG. 5). An arrow points from the inserted stud to the exploded view of stud **189** (FIG. 5). This measure amplifies traction on ice.

Has explained earlier in paragraph 3-5 to FIG. 4; the receiver of unit **99** (FIG. 5) is preprogrammed to receives a command to turn on from said exterior radio frequency signal and so on. Therefore if now the receiver of unit **99** (FIG. 5) receives a command to turn off from said exterior radio frequency signal. Then unit **99** (FIG. 5) will before turning off; execute the following commands, according to the initial preprogram (as mentioned earlier in paragraph 3 to FIG. 4),

and as follows. Will close interior solenoid valve adjacent to connecting port **100** (FIG. 5) cutting the CO₂ gas supply that turns rotor **107** (FIG. 5), off. In turn the pump **136** (FIG. 5) stops. Unit **99** (FIG. 5) then commands unit **190** (FIG. 5) to close internal solenoid valve adjacent to threaded-adapter-to-threaded adapter **114** (FIG. 5); dose internal valve that leads to adapter **110** (FIG. 5); dose internal valve adjacent to adapter **111** (FIG. 5). And open internal valve adjacent to threaded-to-tube adapter **117** (FIG. 5). Hydraulic oil pressure is now directed to flow via said **117** (FIG. 5) and pass into elbow tube-to-tube adapter **118** (FIG. 5) then into tube **119** (FIG. 5) and entering the hydraulic oil reservoir **135** (FIG. 5) via tube-to-threaded adapter **147** (FIG. 5). These actions relaxes, hydraulic oil pressure; from piston **95** (FIG. 5), and piston **96** (FIG. 5) causing them to self retract with the attached gripping parts **123** (FIG. 5). NOTE: The piston **95** (FIG. 5), and piston **96** (FIG. 5), both self retract because they are both parts of hydraulic single acting cylinders (known to the art), **90** (FIG. 5), and **129** (FIG. 5).

A fractures view emphasized by **131** (FIG. 5) showing an inside view of hydraulic oil reservoir **135** (FIG. 5); and that further shows the underside of the hydraulic oil reservoir tube adapter **133** (FIG. 5); that connects with hydraulic oil tube **149** (indicated by a dotted line). A transparent view shows **133** FIG. 4, (indicated by a target sign). The other end of **149** connects to adapter **150**. In turn **150** is partially threaded at one end; this end connects with threads **151** of FILLER BREATHER **152**. Said **152** is twisted to unlock or remove so maintenance can be performed. For example: filling hydraulic oil reservoir **135** (FIG. 5) with oil via adapter **150**. Air breather holes **193** of filler breather **152**; are necessary for letting air pass in and out from the hydraulic oil reservoir **135** (FIG. 5); so that no vacuum is created that would result in inadequate operation of the hydraulic system.

A transparent view shows hydraulic tube **149** (dotted line) reaching hole **145**; (indicated by target sign). Adapter **150** mounted with filler breather **152** (FIG. 5) sticks out vertically from a the two-piece grommet press fitted (not shown) around hole **145** on the exterior lining of upper **195**. Silicone calking seals any gapes between the two-piece grommet, and the exterior bottom part of adapter **150** keeping **150** firmly in place. Hole **145** is positioned high on the boot to help prevent exterior environmental elements from entering.

The final assembling of the boot shell, with the the traction apparatus for boot **137**, is now explained.

Inside THE UPPER **195** (known to the art) know as the boot part without the sole part **138** of boot **137**. Said upper **195** is preferably made of TOP-GRAIN leather for the exterior lining; having a mid-lining(s) forming the insulation); made of breathable fiber material(s); for example made of: nylon fiber(s), natural fiber(s) such as Bamboo. The interior lining is preferably made of MID-GRAIN leather. That said; the entire upper **195**, can and may be made of synthetic breathable fiber material(s). Double-stitched (diamond) seams (example **143**), used for their durability and strength are used throughout the upper **195**. Other parts shown, boot tongue **178**, lacing **198**, eyelets for lacing **194**, hocks for lacing **197**.

A hard molded plastic MIDSOLE (not shown) covers the entire surface area that is the bottom part of said upper **195**. Said midsole is pre molded. Herein (the mold) a rectangle opening is left in said midsole; so that when the midsole is placed at the bottom inside the upper **195**; the said rectangle opening is immediately above the DC voltage battery compartment **97** (FIG. 5). An accessible door (not shown) also made of hard molded plastic fits flush over the said rectangle opening.

A BOOT-LAST (not shown, and known to the art) made of thermo set plastic material(s); that is a type of foot mold used to give the upper **195** its shape. This is achieved by placing the said midsole in the bottom part of the boot-last; then placing the boot-last inside the upper **195**. Now the upper **195** is inserted over a heated press, and pressure is added. The south end of the upper **195** is folded over the exterior underside of said midsole. After this step; the outsole **138**; having all the assembled and tested components to (FIG. 5), inside; **138**, is then cemented (using glue) with the underside of the upper **195**; (reference area **196**). A removable foam INSOLE (not shown and known to the art) that provides foot comfort; is placed over the said midsole inside the upper **195**.

The making of the OUTSOLE **138**, of the boot **137**; with the above described traction apparatus placed inside the mold (mold made of material(s)).

Area **134** (FIG. 5) that surrounds hydraulic cylinder **90** (FIG. 5), and hydraulic cylinder **129** (FIG. 5) is filled with rubber compound(s) simultaneous with area **138** (FIG. 5), inside a mold; that encompasses the entire outsole **138** FIG. 4, and **138** FIG. 5). So that in the end once the outsole is unmolded; the underside will resemble area **138** (FIG. 5), having rubber LUGS **98** (FIG. 5), (LUGS are a projecting part, known to the art). Both hydraulic cylinders **90** (FIG. 5) and **129** (FIG. 5), are visible; although imbedded between 3 millimeters and 7 millimeters deeper (lower) than the flush part shown of outsole **138** to (FIG. 5). This way when piston **95** (FIG. 5), and piston **96** (FIG. 5) are extruded each with their respective mounted gripping parts **123** (FIG. 5); and will be flush with; therefore not exceeding in length the ends of the lugs **98** (FIG. 5) shown on the underside of **138** (FIG. 5). This way; increased traction is assured via gripping parts **123** (FIG. 5); yet providing a comfortable and natural contact with any ground, surface, ice, snow (terrain); as would normally be expected from a standard hiking boot. The only exception to this; is if the studs **189** (FIG. 5) are mounted to gripping parts **123** (FIG. 5); increasing the traction; and raising the gripping parts no more than 5 millimeters.

Notes:

Hydraulic oil reservoir **135** (FIG. 5) is made of molded plastic.

All gas pneumatic tubing, of boot **137** is flexible and of pneumatic grade; and all pneumatic adapters (Fittings) are of pneumatic grade.

All hydraulic tubing, of boot **137** is flexible and of hydraulic grade; and all tubing adapters (Fittings) are of hydraulic grade.

A small magnet is placed inside the hydraulic oil reservoir **135** (FIG. 5) for collecting metal debris from metal components wear of the boot traction apparatus.

Pressurized carbon dioxide CO₂ gas cartridge **86** (FIG. 3) are good for several discharges that may exceed 50 in number; considering the small area (of boot **137**) that is traveled by the gas that is needed to operate the gas pneumatic double-vane rotary actuator **107**; and time it takes for the traction apparatus as a hole to extrude the gripping parts **123** (FIG. 5); and with the added benefit that hydraulic oil single acting cylinders **90** (FIG. 5), and **129** (FIG. 5) are self retracting; further reducing the use of pressurized carbon dioxide CO₂ gas.

An on/off switch positioned near **139** (FIG. 5) for controlling unit **99** (FIG. 5) can and may be added to the boot traction apparatus to the present embodiment.

The boot traction apparatus of the present invention can and may be controlled using an exterior infrared-transmitter to an infrared receiver unit inside area **134** (FIG. 5) instead of radio frequency receiver of unit **99** (FIG. 5).

Cartridge **86** (FIG. 3) containing pressurized AIR instead of pressurized carbon dioxide CO₂ gas; can and may be used.

The traction apparatus described including all the contents therein of **138** and **137** to FIG. 4 and to (FIG. 5) can and may adapt with artificial limbs; for example: android(s).

FIG. 6, shows a traction apparatus mounted on a snowmobile ski **176**; wherein a fractured view of ski **176** (at each end of **176**) is shown; and further showing a snowmobile attachment part **182**. Each traction apparatus of a pair; are each mounted on a separate snowmobile ski of a snowmobile (snowmobile not shown). To provide a lucid understanding to the viewer; only one traction apparatus mounted on one ski **176**, are shown. However the pairs of snowmobile skis each mounted with a traction apparatus will be explained together where it becomes obvious that the pairs are needed to proceed.

The snowmobile attachment part **182**; and a snowmobile snowmobile engine steering column, rotary vane pump, electro-hydraulic pump system, electronic power steering system are used only as reference to the present embodiment.

However ski **176** to FIG. 6, and all that pertains to FIG. 6, and (FIG. 7) is part of the present embodiment. Excluding as mentioned, attachment part **182** FIG. 6.

Using bolts, fitted with lock washers (not shown); an Hydraulic double-vane rotary actuator **166**, is fixed via holes indicated by an arrows via flange mounting parts **169**, and **168** to a sturdy metal plate **170**, that is between (5 millimeters and 10 millimeters thick; wherein said bolts fitted with washers engage said holes, then metal plate **170** via threaded hole immediately under said **169** and **168**; that is two threaded holes facing the viewer to FIG. 6, and two other threaded holes at the back: opposite side (not shown).

Said Hydraulic double-vane rotary actuator **166**, engages one end of a metal drive shaft **162**. Both **166** and **162** are partially keyed (having a keyway) NOTE: (Shaft **162** is partially keyed near the opposite end as well; that is explained further on.). Key **167** is inserted inside the keyway (showing a transparent view of key **167** inserted into **166**); interlocking **166** and **162** together. A polyurethane spacer **171**, is fitted onto drive shaft **162** and is positioned in between **166** and **165** indicated by the letter (B) on drive shaft **162** (other spacers **171** are to be found along **162** indicated also with the letter (B). Said spacer **171** is also known as a recessed bumper, and are used for protecting parts from impact with one and other (and are known to the art). Following **171**, are two equal sized square pillow block bearings **165** and **158** (pillow block bearing are known to the art). Leaving a space in between **165** and **158**; that are both mounted with metal cover **159**; wherein said cover **159** engages snowmobile attachment part **182**, via hole **174**, and **174b** (of said cover **159**) with hole **175** of snowmobile attachment part **182**. Said **182** enters the cover **159**, via an opening (that is visible) above cover **159** to (FIG. 7), in between **184** (FIG. 7) and **185** (FIG. 7) above the drive shaft **162** (FIG. 7). Holes **174** and **174b** and **175** mach perfectly aligned to become (form) one hole **164**; herein a metal supporting shaft threaded at both ends (this supporting shaft is not shown) engages hole **164** crossing from side to side, wherein the threaded ends of said supporting shaft overlap on each sides of cover **159**. Said supporting shaft is fitted at both ends with plastic washers (not shown), followed by, flange-slotted-threaded nuts (not shown) one for each sides. Two cotter pins, one for each said flange-slotted-threaded nuts, that enters the slotted part of said flange-slotted-threaded nuts; crossing a pre drilled hole; one on each ends of said supporting shaft to lock in place the described assembly of parts that engages hole **164**.

Cover **159** mounts over **165** and **158** (as specified earlier of paragraph two to FIG. 6) so that the bottom part of cover **159**, ends flush with the bottom extremity of **165** and **158**. Both the left side extremity, and right side extremity of cover **159** aligned flush; and match perfectly with the left side extremity of **165**, and the right side extremity of **158**; and is indicated by two dotted lines. Both the cover **159** and the snowmobile attachment part **182**, to FIG. 6, are shown from a slight angle, to show their dimensional shape. However, **159** and **182** are align perfectly square, placed inline with **165** and **158** before mounting them together. Cover **159** is securely engaged with **165** and **158** via **183** to (FIG. 7), using four metal bolts(not shown), each said bolt is fitted with a lock washer and metal washers(washers not shown); then put into holes **183** (FIG. 7); and secured into threaded holes immediately under holes **183** (FIG. 7). And further indicated by arrows to FIG. 6, via top of **172** of pillow block bearing **165**, and via top of **173** of pillow block bearing **158**; not forgetting the other two threaded holes at the opposite side of said arrows to **172** and **173**.

A space between snowmobile attachment part **182** and drive shaft **162** is assured by the exact proportions of cover **159** and positioning of hole **164**; taking into account pillow block bearing **165** and pillow block bearing **158**. A polyurethane spacer **171** is inserted over drive shaft **162** and positioned in between **158** and pillow blocks bearing **157**. Said **157** helps support drive shaft **162**. Using bolts, fitted with lock washers (not shown); **157** is fixed via hole indicated by an arrow via flange part **160**, to metal plate **170**; wherein said bolts fitted with washers engage threaded hole indicated by an arrow; that is one threaded hole facing the viewer to FIG. 6, and an other threaded hole at the back: opposite side not shown).

Snowmobile ski **176**, and the ski base **163** are both made of material(s).

For a plastic snowmobile ski. Said metal plate **170** is fixed to snowmobile ski **176** using bolts: and preferably flat head key locking bolts (Bolts not shown) that enter the underside of ski base **163** of snowmobile ski **176**, via pre drilled holes, crossing from side to side of snowmobile ski **176** and base part **163**; wherein the bolts engage metal plate **170** via threaded holes(not shown) for receiving them from the underside of metal plate **170**, said flat head key locking bolts. The head part of said flat head key locking bolts enter flush with the underside of base **163** of snowmobile ski **176**; and finish flush inside of plate **170**.

If the snowmobile ski is made of metal; then metal plate **170** can be welded with the snowmobile ski **176**, along the seams between **170** and **176**; or secured using Flat head Bolts, as explained with method for plastic ski.

Proceeding along drive shaft **162**; between pillow block bearing **157** and a shaft support block **155** a polyurethane spacer **171**, is inserted over drive shaft **162** proceeded by a shaft collar **156**, that is in turn proceeded by a polyurethane spacer **171**. Said shaft collar **156** (known to the art) is fixed to drive shaft **162**, via a recessed set screw (not shown). Shaft collar **156**, provides both polyurethane spacers **171**; positioned left, and right, of **156** a tight flange fit, that is: between **157** and **156**. And between **156** and **155**. Shaft support block **155** is fixed to **170** in the same way as **157**. Shaft support blocks are known to the art.

Drive Shaft **162** traverses Shaft support block **155**, and exits **155**, to engage with an external retaining ring **153** via a groove indicated by arrows (ring **153** is a preventive measure). A centimeter after said groove the drive shaft ends. The drive shaft **162** is interlocked with Shaft support block **155**; since **162** and **155** are both partially keyed. Key **177** is

inserted inside the keyway (showing a transparent view of key **177** inserted into **155**); interlocking **155** and **162** together.

Therefore, put in simple terms; the Hydraulic double-vane rotary actuator **166**, and the shaft support block **155** rotate with the ski **176**; but not the cover **159**, and therefore not the snowmobile attachment part **182**.

Furthermore only the berrings **184** (FIG. 7), and **185** (FIG. 7), rotate inside the pillow blocks **165**, and **158**. But not their pillow blocks. **157** is an essential part and preventive measure by supporting the drive shaft **162**, so it does not bend from the weight of the snowmobile and passengers aboard.

FIG. 7, bearings **184**, of pillow block **165** to (FIG. 6) and bearings **185**, of pillow block **158** to (FIG. 6) are both shown without the pillow blocks; to hopefully give the viewer a clear understanding; about the movements of the drive shaft **162**, in relation to the bearings **184**, and **185**, that turn in accordance to the drive shaft **162**. And since the pillow blocks part of **165**, and **158**, don't move; but instead remain stable with the cover **159** and **159** to (FIG. 6), that holds, supports a snowmobile via the snowmobile attachment part **182** (FIG. 6); that is positioned above and between **184**, and **185**. This way the snowmobile ski **176** (FIG. 6) (see Diagram top right to (FIG. 6)); is enabled to pivot from side to side from the axis **179** (FIG. 6) (see target sign), synchronously with the drive shaft **162**. For example: 15 degrees to the right of the axis, or 15 degrees to the left of the axis.

The Hydraulic double-vane rotary actuator **166** turns the drive shaft **162** in relation to the hydraulic oil pressure entering, said **166**. That is, via port hole **191** (FIG. 6), and exiting via port hole **192** (FIG. 6); or the reverse: entering **192** (FIG. 6), and exiting **191** (FIG. 6). Hither way determines the direction the drive shaft **162** turns: clockwise or counterclockwise. This next step is determined by the hydraulic power steering system of a snowmobile, powered by the snowmobile engine.

Using hydraulic grade hose lines and hydraulic grade fittings that connect to port hole **191** (FIG. 6) and port hole **192** (FIG. 6); of the Hydraulic double-vane rotary actuator **166** (FIG. 6) of each apparatus to (FIG. 6) mounted on each of a pair of snowmobile skis of the present invention. And first connecting each ends of hydraulic lines coming from each port **191** (FIG. 6); connecting them to a hydraulic (T) adapter fittings. Then adding a hydraulic line to the remaining adapter end of said (T) fitting; and connecting the opposite end of said hydraulic line (having a adapter fitting to connect with) to the right side valve connecting port of the hydraulic oil double-vane rotary pump of a snowmobile. Then connecting each port holes **192** (FIG. 6) with the methods used for(connecting) port holes **191**; but instead connecting the ports **192** (FIG. 6) with the left side valve connecting port of said pump.

Now that all is connected to a snowmobile; the direction that the snowmobile steering column is turning (is turned) determines the valve (said right valve or left valve) on said pump that will be sending hydraulic oil pressure accordingly to the designated port hole **191** (FIG. 6), or **192** (FIG. 6) of the Hydraulic double-vane rotary actuator **166**. As mentioned earlier, the direction the steering column is turned; this will determine the direction the drive shaft **162** (FIG. 6) pivots; clockwise or counterclockwise. This way the pair of skis **176** (FIG. 6) will also pivot accordingly, and in synchronization with the drive shaft **162** (FIG. 6) of each apparatus (FIG. 6) mounted on each of the skis **176** (FIG. 6).

The Traction Produced by Each Mounted a Apparatus to (FIG. 6), on Each of a Pair of Snowmobile Skis is Explained:

As with all snowmobile skis, it is when tuning a curve that the traction is most needed; but is also the critical point, determining if the traction of the skis is good or bad.

15

Therefore, below describes a pair of snowmobile skis each mounted with the apparatus of the present invention in a turning situation.

The gravitational force exerted on each ski increases closer to the inbounds of the curved trajectory line as the skis tilt in accordance with a curved trajectory line; increasing traction of the pair of skis on snow (see diagram top right to (FIG. 6).

Traction on Ice is Explained.

The edge part of ski **176**; shown where the arrow ends base part **163** (FIG. 6). See also Diagram top right (FIG. 6); that shows the edges to both sides of ski; **180** (FIG. 6) and **181** (FIG. 6). When the snowmobile skis are turning the edges of the skis are parallel to a curves trajectory line (cutting into the ice) that in turn increases traction of the skis; and the effect is furthermore amplified by the mass weight of the snowmobile that is shifted into the curve and exerted on the edge of the pair of skis has they are cornering on ice surfaces.

In an other aspect of the traction apparatus for snowmobile skis of the present invention.

The traction apparatus for snowmobile skis, can and may connect and operate with; an electro-hydraulic steering system; by connecting with the ports of solenoid valves of an electro-hydraulic rotary pump, with the hydraulic oil lines that are connected with **191** (FIG. 6) and **192** (FIG. 6) of **166** (FIG. 6).

Furthermore. The traction apparatus for snowmobile skis, can and may connect to operate with; an Electric power steering system. Wherein the Hydraulic double-vane rotary actuator **166** to (FIG. 6), is instead replaced by an Electric motor(not shown). This is done by aligning the electric motors drive shaft, with the drive shaft **162** (FIG. 6) and connecting them together using a keyed shaft coupling (not shown, and known to the art). But before fixing the said shaft coupling; adding polyurethane spacers **171** to (FIG. 6); one on each sides of the said keyed shaft coupling; followed by shaft collars similar to **156** to (FIG. 6), again one for each sides. This arrangement will protect parts from impact. Then connecting the electric motors wires to the said Electric power steering system using wire cable.

Notes to FIG. 6, and to FIG. 7:

The snowmobile ski **176** to (FIG. 6), wherein the pair of skis are made of plastic; can and may have metal blade edges (not shown), **180** (FIG. 6) and **181** (FIG. 6) along the sides of each skis; similar to blade edges on alpine skis.

Metal parts comprising: square pillow block part of **165** (FIG. 6), square pillow block part of **158** (FIG. 6), pillow block part of **157** (FIG. 6), the Shaft support block **155** (FIG. 6), the cover **159** (FIG. 6), and **159** to (FIG. 7); can and may preferably be made of aluminum to provide strength and light weight; and preferably each having a corrosion resistant zinc coating.

16

Pillow block bearing **157** (FIG. 6) can, and may be replaced by a Shaft support block, similar to **155** (FIG. 6).

Said polyurethane spacers are preferred over rubber for their abrasive resistance and support impacts from other parts even under low temperatures.

Said metal drive shaft **162** (FIG. 6), can and may preferably made of hard **1117** steel (known to the art), that is corrosion resistant to face the environment; and to resist the compounded weight of the snowmobile and passengers, and when applying the brakes, and for resisting to impacts' for example: when hitting bumps.

What is claimed is:

1. System for producing traction, wherein the traction system is at least one of an apparatus that provides traction on snow and ice covered surfaces, said system comprising:

a traction apparatus adapted to each of a pair of footwear, each said apparatus having a pre-programmed first unit consisting of a, DC powered radio frequency-receiver-servo-control-solenoid valve unit, that is turned on by an exterior source radio frequency transmitter acting as an on/off switch; and

captured by the receiver to opens the solenoid valve of the first unit; that controls incoming pressurized carbon dioxide gas from a cartridge, that

powers a gas pneumatic rotary actuator powering a hydraulic vane pump feed hydraulic oil from a reservoir, said first unit controls a second DC powered solenoid-multi valves unit acting as an on/off switch that controls the inflow and out flow of oil pressure from the pump and reservoir;

the oil pressure produced by the pump powers two hydraulic oil cylinders each having a piston wherein each piston is fixed with at least one of a gripping parts; that extrude from the underside of each footwear soles;

said hydraulic cylinders are single acting type that self retract the pistons with said gripping parts when oil pressure is cut off.

2. The footwear apparatus to claim **1**, wherein the apparatus is adapted for at least one of, boots, and shoes.

3. The first unit of footwear apparatus to claim **1**, wherein said first unit is pre-programmed by computer.

4. The transmitter controlling the footwear apparatus to claim **1**, wherein said transmitter is an interface broadband communication system, that operates from at least one of, mobile phone, and computer module, and remote control transmitter.

5. The footwear apparatus to claim **1**, that is controlled by an on/off switch fixed to the exterior lining of the upper part of said footwear and linked to the first unit of the apparatus using wire cable.

* * * * *